

# Four County Inventory

## Adams, York, Cumberland, Franklin



Pennsylvania Natural Heritage Program

South Mountain Partnership Meeting  
Presented by: Denise Watts & Rachel Goad



# Pennsylvania Natural Heritage Program

*Providing scientific information for the for the conservation  
of Pennsylvania's biological diversity*

Western Pennsylvania Conservancy



A member program of  NatureServe



# Current Project Area Data

■ Natural Heritage Areas (NHAs)

□ Counties

## Age of EOs Outside of NHAs

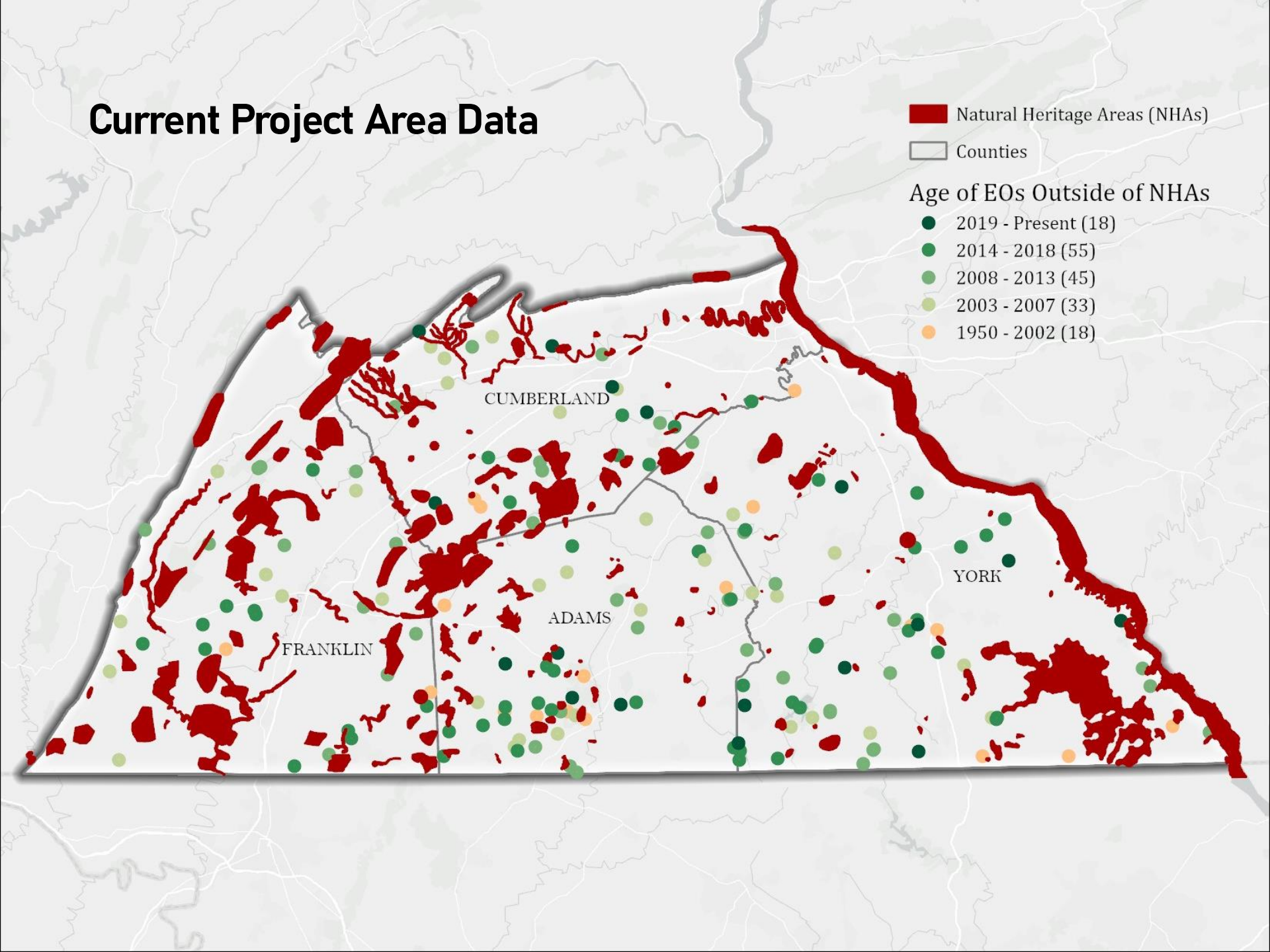
● 2019 - Present (18)

● 2014 - 2018 (55)

● 2008 - 2013 (45)

● 2003 - 2007 (33)

● 1950 - 2002 (18)



<https://www.naturalheritage.state.pa.us/inventories.aspx>

# Inventories past

- Adams (2002)
- Cumberland (2005)
- Franklin (2004)
- York (2004)



## County Natural Heritage Inventories

PNHP regularly performs inventories throughout Pennsylvania and reports on the critical biological resources that are found within [Natural Heritage Areas](#) (NHA). The County Natural Heritage Inventory (CNHI) reports resulting from this effort include an introduction to the ecology of the focal county, a description of methods used to collect data, and descriptions of each NHA in the county; including maps, images, lists of present species and natural communities, and conservation recommendations regarding their management and protection. CNHI reports are snapshots of the known biological information at the time of the inventory.

As data collection and reporting methods have changed over time, not all inventory reports are formatted in the same manner. However, they all provide information for the same purpose, namely to highlight the areas within each county which are known to host valuable components of Pennsylvania's natural heritage and provide guidance for the continued conservation of these sites.

To access data which has been collected since the publication of the last compiled county report or to access individual NHA reports, users should visit the [Conservation Explorer Map](#) and turn on the "Natural Heritage Area: Core Habitat" layer. A list of the NHAs and site descriptions is available [here](#). Many of our Natural Heritage Area Reports follow a new format. Learn how to fully utilize the information in Natural Heritage Area Reports [here](#).

If you are a conservation professional with data that are not represented in one of our CNHI reports, please use this [form](#) to send us information you would like us to review for inclusion.

County Reports	Year
<a href="#">Adams (4mb)</a>	2002
<a href="#">Allegheny (21mb)</a>	2021
<a href="#">Armstrong (16mb)</a>	2021
<a href="#">Beaver (12mb)</a>	2021



# What do we do?

- Field-based surveys of plants, animals, and natural communities to identify important ecological areas
- Document and describe Natural Heritage Areas (NHAs) that include:
  - Detailed maps for local and regional planners
  - Management recommendations
- Provide data to state agencies, landowners, county/regional planning, etc.
- Public outreach about ecological and biological resources



# Reasons for an update

- Things change... (landcover, plans, etc)
- Biodiversity Areas (BDAs) are now called Natural Heritage Areas (NHAs)
- Standardized mapping methodology
- PNHP tracks different species (de-listings, additions)
- Align the data with Pennsylvania Conservation Explorer environmental review tool.

Right, top to bottom:  
**Nodding trillium** – Scott Ward  
**Rough wood aster** – Don Cameron  
**Eastern coneflower** – Emily Oglesby

# Botanical targets



**Shumard's oak** – Aiden Campos

**Short leaf pine** – Scott Ward



# Zoological targets



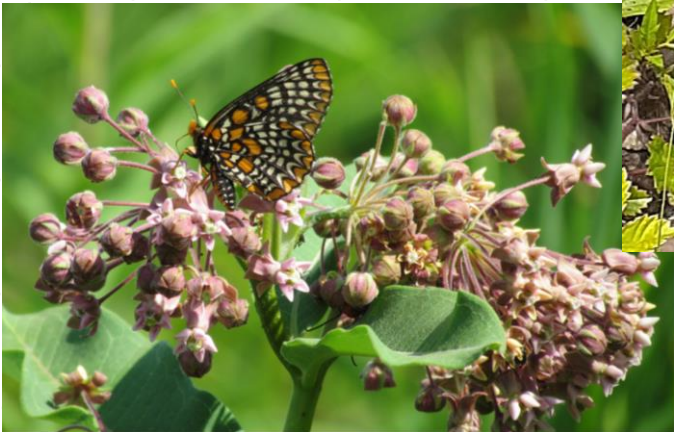
Yellow lampmussel (*Lampsilis cariosa*),  
Mary Walsh, PNHP



Eastern Hog-nosed Snake  
(*Heterodon platyrhinos*),  
Denise Watts, PNHP



Barn Owl (*Tyto alba*), Karl Kleiner, YCP



Baltimore Checkerspot (*Euphydryas  
phaeton*), Betsy Leppo, PNHP



Brook Floater (*Alasmidonta varicosa*),  
Mary Walsh, PNHP

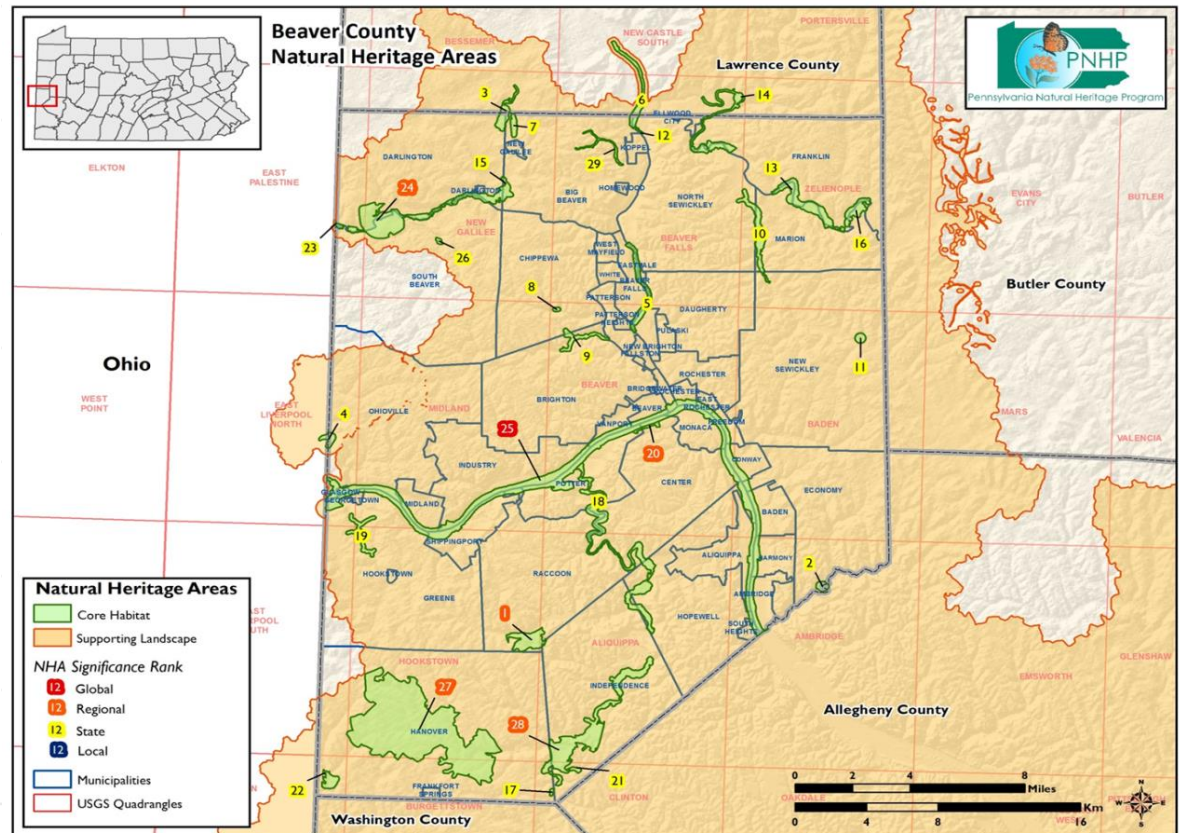


# Where and Why We Survey

- Funding from counties, planning commissions, agency initiatives
  - CNHI Updates
  - Greenways Plans
- Biodiversity hotspots
- Aging and historical data points
  - Maintain accurate, up-to-date information
- Special projects
- Possible habitat loss or alteration
  - Natural resource extraction and related projects

# 4 County Data Products

- Updated information for all existing and new NHAs
- GIS geodatabase with information for all NHAs
- An executive summary



# Regional NHI Data Uses

## Conservation Explorer Online

<https://conservationexplorer.dcnr.pa.gov/>

- Conservation Planning
- PNDI Environmental Review

**PNHP** Pennsylvania Natural Heritage Program

Home Map Terms & Conditions Contact Us Help

Switch Basemap Add Resources Conservation Report

Layers Make a Map Feature Search

Conservation Planning

- Abandoned Mine Locations
- Wilderness Trout Streams
- Class A Streams
- Streams Supporting Natural Trout Reproducti
- Chapter 93 Existing Use Streams
- Chapter 93 Designated Streams
- Important Bird Areas
- Natural Heritage Area: Core Habitat
  - Natural Heritage Areas: Core Habitat
- Natural Heritage Areas: Supporting Landscap
  - National Wetlands Inventory
- National Hydrography Dataset
- Climate Change Connectivity

Protected Lands

- State Forests
- State Parks
- State Game Lands
- Conservation Easements
- Farm Easements
- Federal Lands

**Identify**

Select a resource and click on map to identify

Identify Visible Resources

Identify On: Visible Layers in Resource

Identify By: Point

Use Buffer: 1 Miles

Show Identify Graphic

**Details (1 of 1): Natural Heritage Area: Core Habitat - Big Pine Flat Barrens**

**Layer:** Natural Heritage Area: Core Habitat

**Site Name:** Big Pine Flat Barrens

**Map ID:** null

**Description:** "Ridgetop Dwarf-Tree Forest Natural Community" and an "Ephemeral fluctuating Pool Natural Community" support several species of concern.

**County:** CUMBERLAND, ADAMS, FRANKLIN

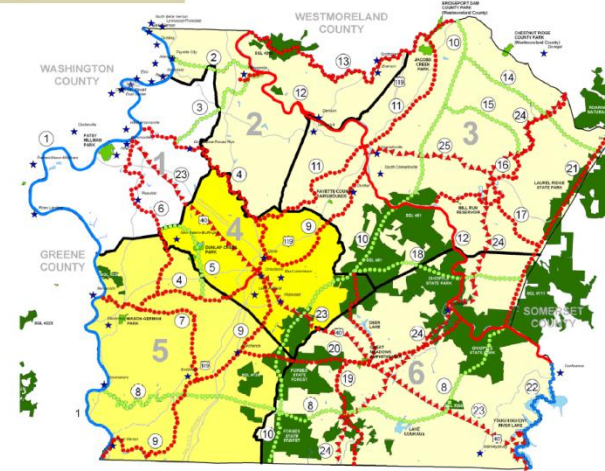
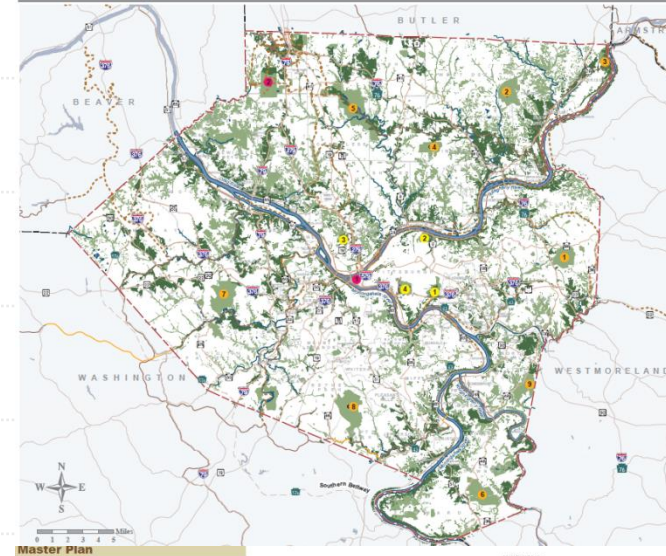
**Description Link:** <https://www.naturalheritage.state.pa.us/cnhi/cnhi/Big Pine Flat Barrens.pdf>

Zoom Flash 1 / 1 Tasks

# County Planning/Regional Uses

- Comprehensive Planning
- Greenway Planning
- Parks and Recreation Planning
- Land Preservation & Land Trust Planning
- Local Project Environmental Review

Greenways Network



# Project Contacts

**Denise Watts**

Inventory Ecologist

717-787-0647

[dwatts@paconserve.org](mailto:dwatts@paconserve.org)

**Rachel Goad**

Botanist

717-787-7395

[rgoad@paconserve.org](mailto:rgoad@paconserve.org)

[www.naturalheritage.state.pa.us](http://www.naturalheritage.state.pa.us)



Pennsylvania Natural Heritage Program