

An aerial photograph of a river valley. A river flows through the center, with a road crossing it. The surrounding area is lush green with trees and some houses are visible in the upper part of the image.

Trails Assessment for Southern Michaux

Russell Hedberg, Ph.D., *Center for Land Use and Sustainability*

About the CLUS

Our Mission: Fostering healthy, vibrant, and sustainable communities through applied research, experiential learning opportunities, and interdisciplinary, cross-sector partnerships.



About the CLUS

Our vision is to be a leader in transforming scientific research into social innovations that promote a thriving economy while preserving resources and reducing the impacts of climate change.

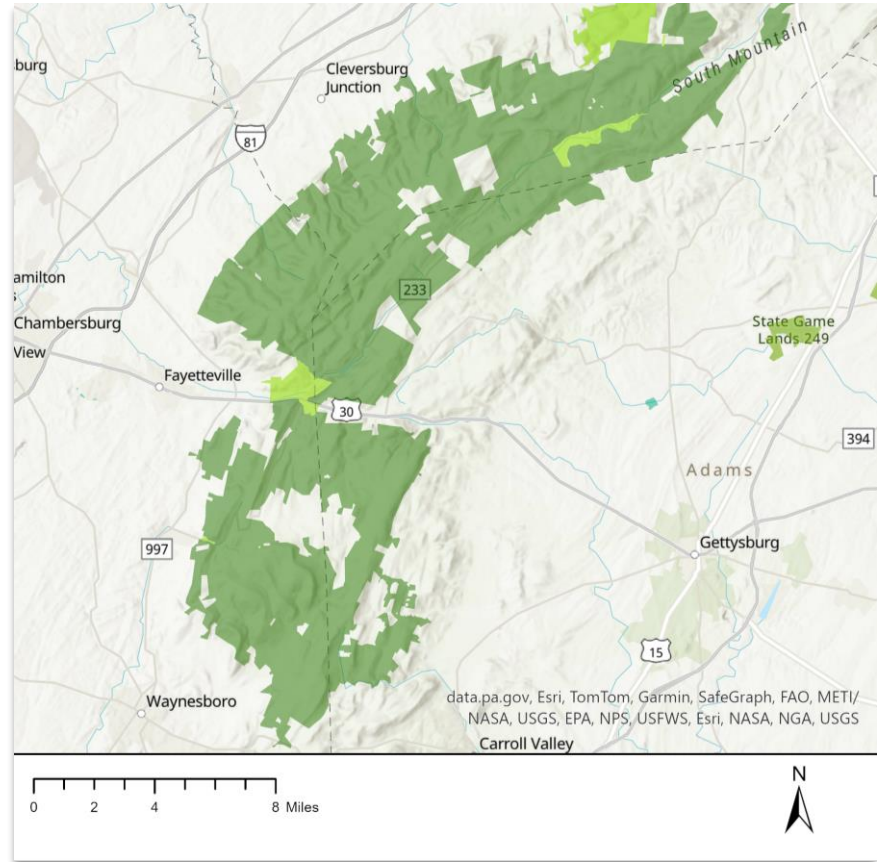
Our Guiding Values:

1. Fostering Sustainability, Justice, and Equity
2. Student Success
3. Professional Excellence
4. Collaboration



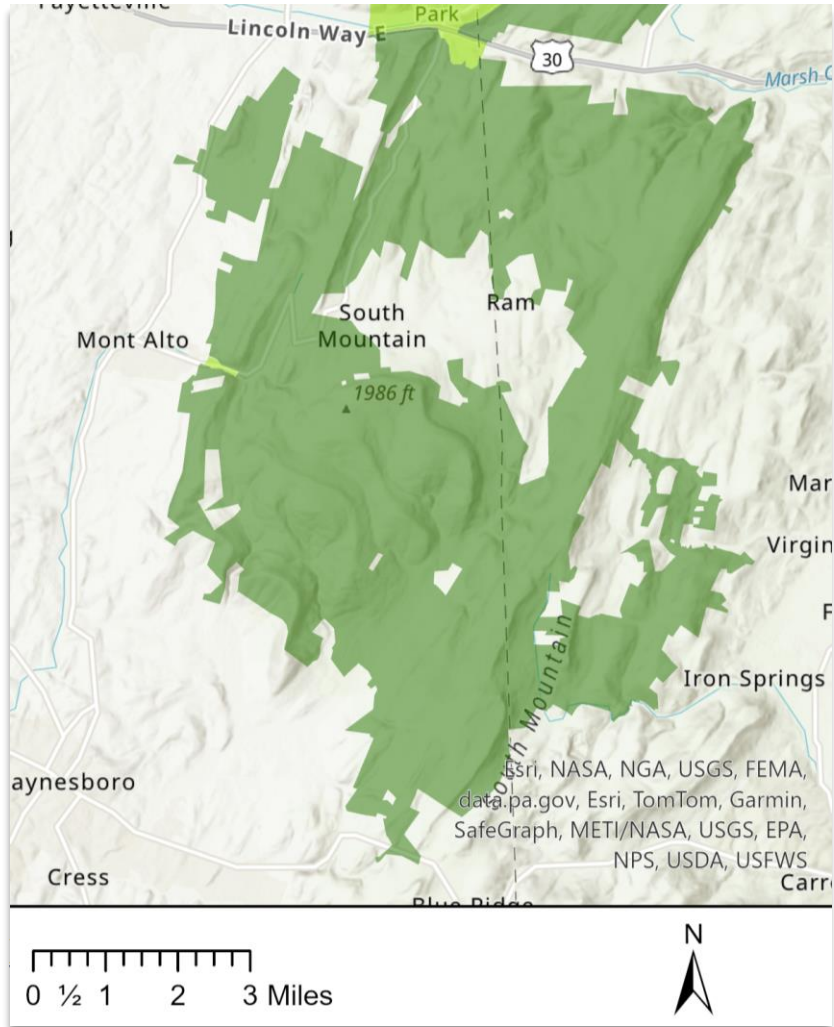
Background:

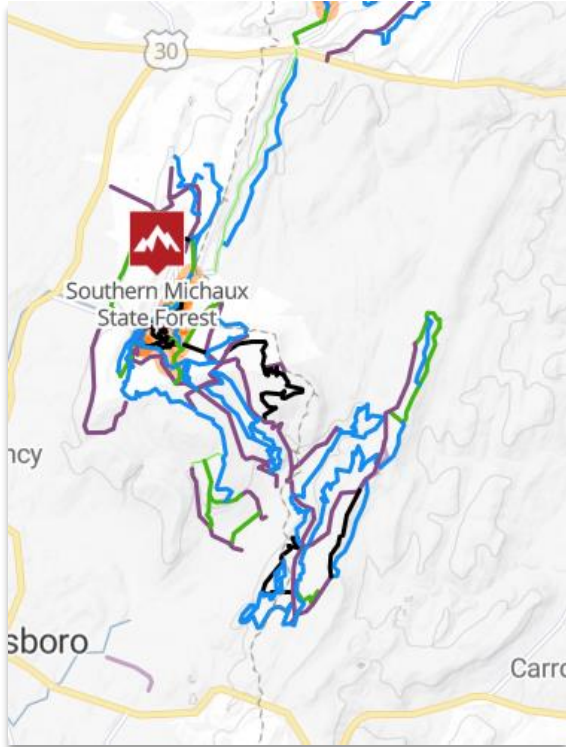
- A continuation of comprehensive trail sustainability assessments across Michaux State Forest



Study Area:

- 7 of 10 management areas
- All 4 natural areas in MSF
- ~ 15 miles of App. Trail
- 179 lease camp sites
- 25 State Forest campsites





Current Trails:

- Heavily used
- Largely informal
- User-built



Assessment Objectives:

1. GIS analysis of current trail network
2. Develop a trail suitability model based on management priorities
3. Conduct field-based trail assessment
4. Engage with user groups to understand citizen engagement and support management priorities.



Trails in the Mountain Creek Watershed

Trail Optimization for Sustainability & Better Outdoor Recreation

July 6, 2022

<https://storymaps.arcgis.com/stories/40aa2e16794647a591b6e2b581e33b11>



**Center for Land Use
and Sustainability**

SHIPPENSBURG UNIVERSITY



Thank You!

<https://centerforlanduse.org>



**Center for Land Use
and Sustainability**

SHIPPENSBURG UNIVERSITY



@ShipCLUS

Contact Us

Dr. Russ Hedberg
Interim CLUS Director
rchedberg@ship.edu
(717) 477-1515

Holly Smith
Project Manager
hsmith@ship.edu
(717) 477-1519



**Center for Land Use
and Sustainability**

SHIPPENSBURG UNIVERSITY