

Lunch and Learn:

Using *State of the Region* in
DCNR funding applications

March 7, 2025



pennsylvania

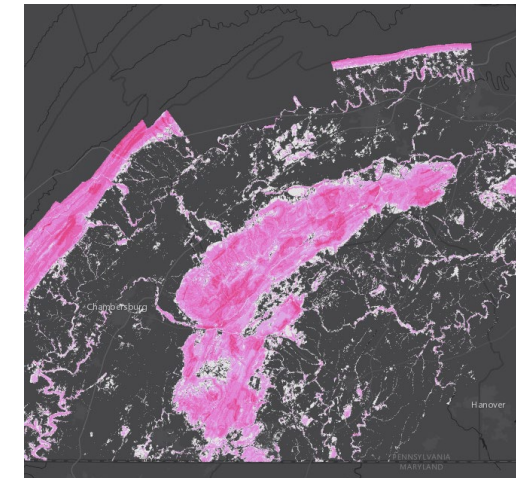
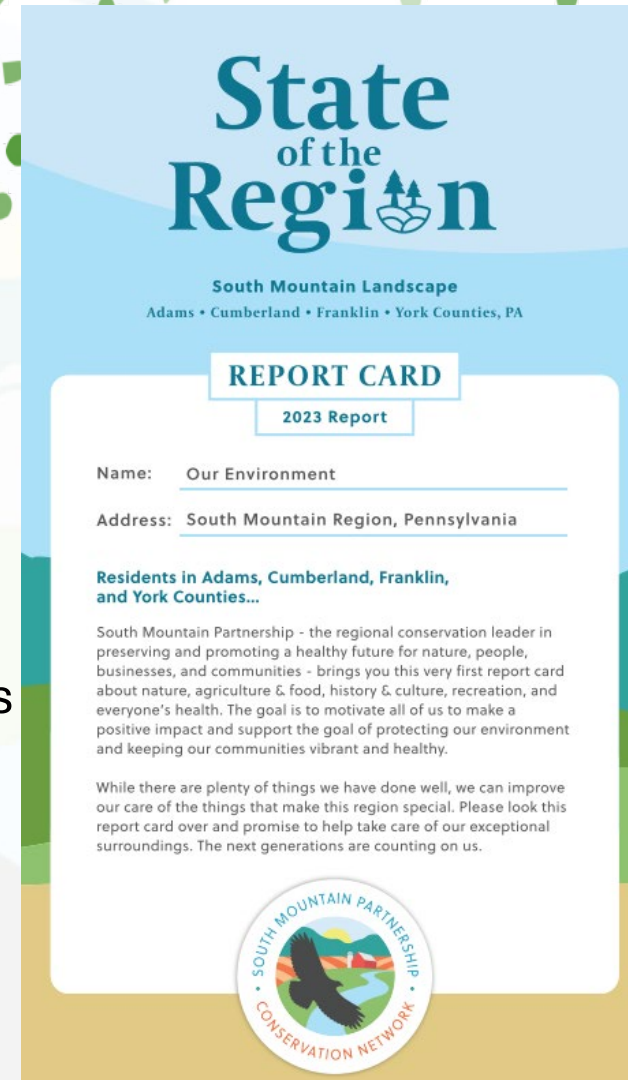
DEPARTMENT OF CONSERVATION
AND NATURAL RESOURCES



What Have We Been Working On?

State of the Region project (2023)

- First-ever in Pennsylvania!
- “Grades” public health + environmental health
- Maps environmental and public health data and identifies priority conservation areas
- Identifies regional challenges + recommended actions
- To be used to make strategic decisions



Goals & Objectives

- Understand and communicate regional observations, trends, challenges
 - public health
 - quality of life
 - conservation, recreation
- Monitor status of conditions over time (future editions of Report Cards)
- Facilitate diverse organizations to collaborate on needed course corrections



Public Input



- Steering Committee questionnaire
- Partners' Survey
- Fall, Winter, Spring Partnership meetings
- Tourism Forum
- Subject Matter Advisors
- SMP Leadership Committee
- Facebook postings & E-newsletters



Counties' Input

- Steering Committee
 - Role
 - Input
 - Monthly meetings
- Survey & Questionnaire
- Plan Review
- Planning Directors' meeting



Deliverables & Audiences

1. Report Card

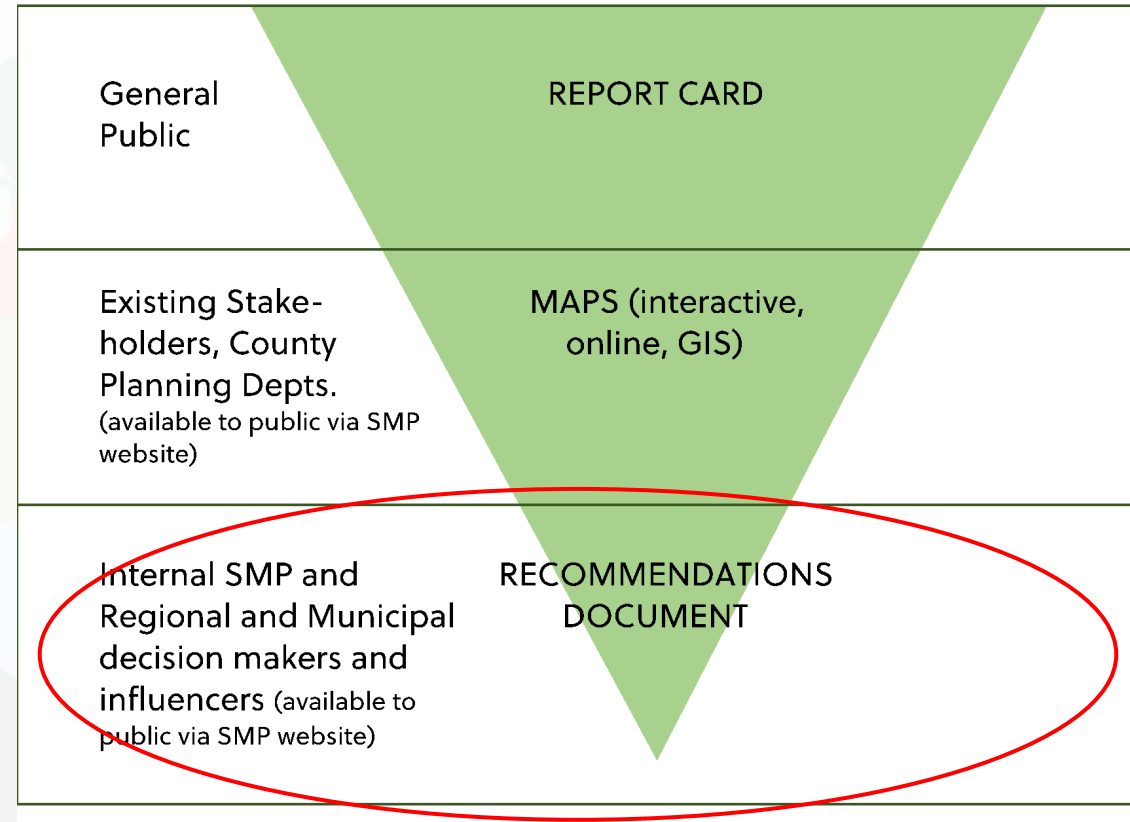
- General public
- Partners, other interest groups

2. Interactive Maps

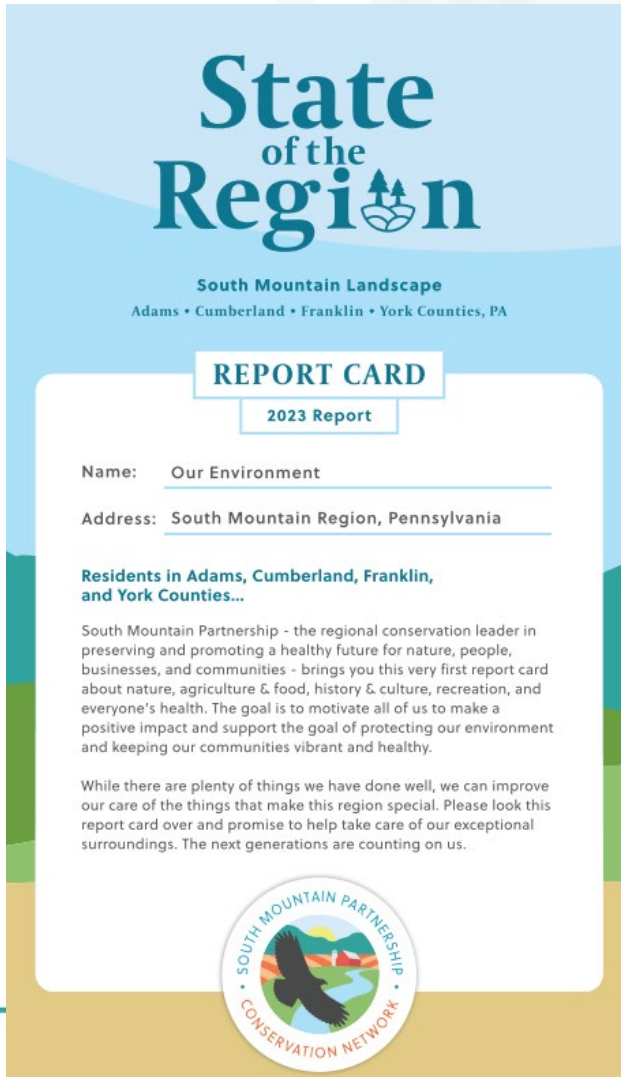
- Planning agency staff, Partners
- Some general public

3. Final Report & Recommendations

- Key decision-makers & policy-makers
- Planning agency staff, Partners



Report Card – “How are we doing?”



The report card template features a light blue header with the 'State of the Region' logo, which includes a stylized mountain and sun icon. Below the logo, it specifies 'South Mountain Landscape' and lists the counties: Adams • Cumberland • Franklin • York Counties, PA. A white box in the center contains the title 'REPORT CARD' and '2023 Report'. The form fields are pre-filled with 'Name: Our Environment' and 'Address: South Mountain Region, Pennsylvania'. The main body of the card contains two paragraphs of introductory text and a circular logo for the South Mountain Partnership Conservation Network at the bottom.

State of the Region
South Mountain Landscape
Adams • Cumberland • Franklin • York Counties, PA

REPORT CARD
2023 Report


Name: Our Environment

Address: South Mountain Region, Pennsylvania

Residents in Adams, Cumberland, Franklin, and York Counties...

South Mountain Partnership - the regional conservation leader in preserving and promoting a healthy future for nature, people, businesses, and communities - brings you this very first report card about nature, agriculture & food, history & culture, recreation, and everyone's health. The goal is to motivate all of us to make a positive impact and support the goal of protecting our environment and keeping our communities vibrant and healthy.

While there are plenty of things we have done well, we can improve our care of the things that make this region special. Please look this report card over and promise to help take care of our exceptional surroundings. The next generations are counting on us.

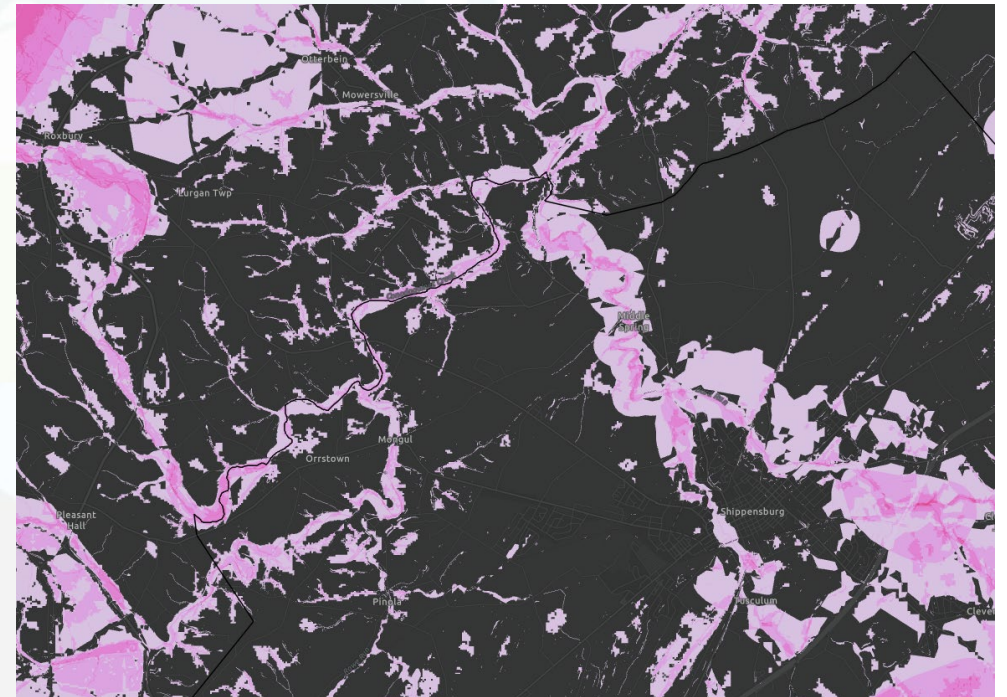


- FOR: PUBLIC
- Confirms what is going well and what we should continue!
- Identifies lots to understand better
- Understand where we need course corrections



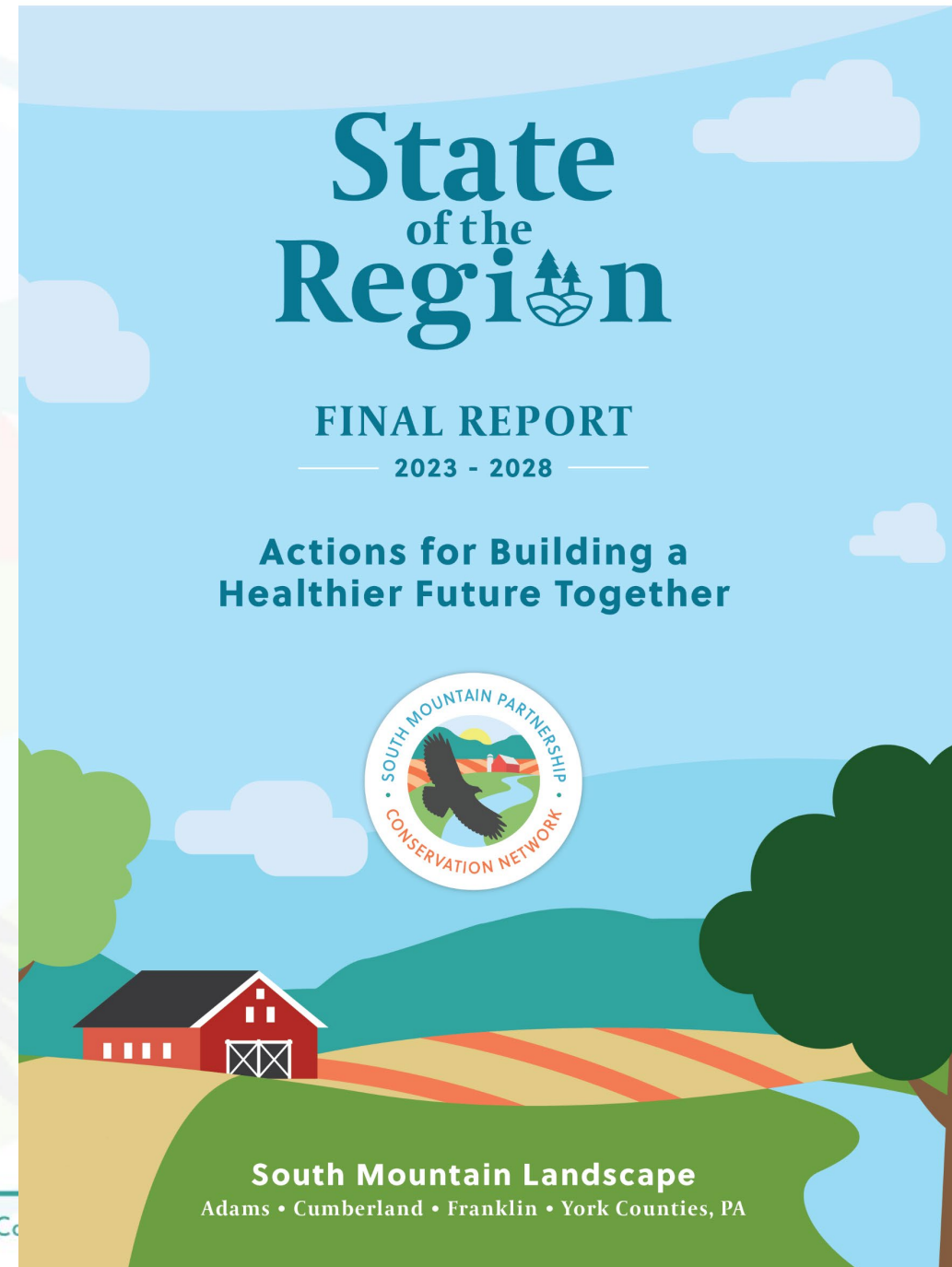
Interactive Maps

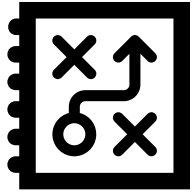
- FOR: PLANNERS, CONSERVATION PARTNERS
- Shows the Report Card measurements on a map
- Identifies “Nexus” areas of importance
- High Priority Conservation Areas, Agricultural, Natural, Recreational, Historic & Cultural resources + more



Final Report & Recommendations

- FOR: DECISION MAKERS, ELECTED OFFICIALS, INFLUENCERS
- Summary of entire process
- SMP Action Plan
- Regional challenges
- Proposes actions for local partners like you!
- Chapters 5, 6, 7.
- [Link to Final Report](#)





Regional Challenges

Chapter 5

The regional challenges are:

- Sustainable Development – balancing growth with preservation of resources and quality of life
- Water Quality and Quantity – including water quality for consumption and habitat and stormwater management
- Loss of resources – including farmland, forest, history and culture, and habitat
- Public health – including physical and mental health
- Recreation – including location, access, demand/supply, maintenance, and sustainability



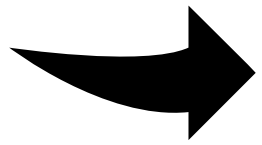


Recommendations

Chapter 6

60+ recommendations for anyone/any organization to take that will help to address the regional challenges identified





Action Plan Chapter 7

- SMP adopted 5 major recommendations
- Shows project outline of each adopted project
- Includes project lead, partners, audience, timeframe, first steps, metrics for success, and more



Where to include in application

- Criteria Questions
 - #1
 - #4
- Project Plans



Example #1 – Trail related

- Regional Issue
 - Sustainable Development, public health, recreation
- Recommendations
 - Build more multi-use trails, build more on-road bicycle facilities, connect parks and trails, plan trails/open space with habitat impacts in mind, trail education/programming, revise subdivision and land development ordinances to require park or trail dedication or fee-in-lieu of dedication
- Action Plan:
 - Regional Trail Coalition
 - Expand regional trails, especially cross county multi-use trails



Ask us for a Letter of Support!

Include:

- Template letter already drafted
- Deadline
- Details like: how does your project connect with State of the Region.

The more specific details the better for letters to be meaningful



South Mountain Partnership Lunch and Learn

March 7, 2025

Lori K. Yeich,

Recreation and Conservation Manager,

Central Regional Offices,

Bureau of Recreation and Conservation, PA
DCNR



Eligible Projects

- 🌿 Site development plans, feasibility studies, and comprehensive park and recreation plans
- 🌿 Development of new and rehab of existing local park and recreation facilities
- 🌿 Land purchases for habitat, recreation, and open space
- 🌿 Planning, construction, and rehab of trails
- 🌿 Boat launches, fishing access, and stream restoration
- 🌿 Community tree planting & riparian forested buffers
- 🌿 Statewide and regional education, training, and partnerships



Grant Portal
Open until April
2nd at 4 pm

Somerset Lake Nature Park, Somerset County

Matching Funds

- Most Projects Require 50/50 Match (\$1 for \$1)
- Secured Matching Funds With Letters Of Commitment
- Match Is Not Eligible If Spent Before Grant Agreement Period

CASH

- MOST Federal Funds
- SOME State Funds
- MOST Local Funds
- MOST Private Funds

NON-CASH

- In-House Labor
- Equipment Use
- Donations (Goods & Services)
- Volunteers



Criteria Question Point Values



15 POINTS

25 POINTS

10 POINTS

5 POINTS

5 POINTS

15 POINTS

5 POINTS

10 POINTS

10 POINTS

1

2

3

4

5

6

READY-TO-GO REQUIREMENTS

NEEDS, BENEFITS & URGENCIES

CLIMATE RESILIENCY, GREEN & SUSTAINABLE PRACTICES

ACCESS FOR ALL & ADA ACCESSIBILITY

PUBLIC INVOLVEMENT

OUTDOOR RECREATION PLAN

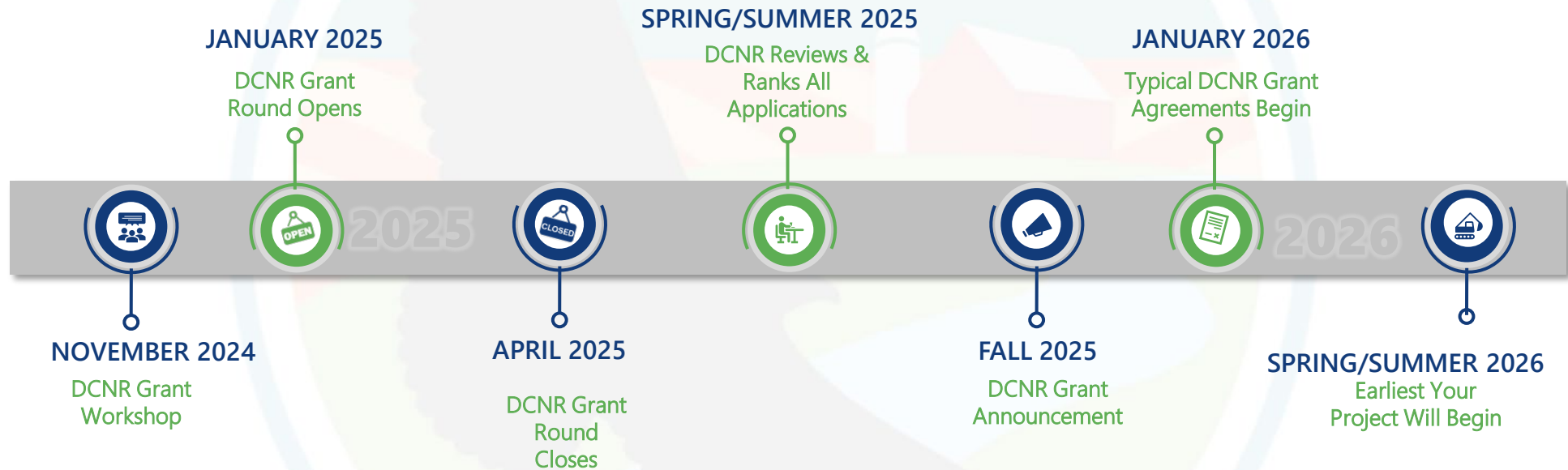
OPERATION, MAINTENANCE & STEWARDSHIP

LOCAL, COUNTY, & REGIONAL PLANS

PARTNERS



DCNR Grant Timeline





Budget solutions number twenty-eight: Use grazing sheep to mow grass in parks. Note: Tired sheep could become food or sweaters.

QUESTIONS?

Lori K. Yeich,

Recreation and Conservation
Manager,

Central Regional Offices, DCNR

lyeich@pa.gov/717-303-8460

Parks and Recreation TV show

[2024 C2P2 Grant Workshop – General Overview](#)

[DCNR Portal](#)

