

# The September 11th National Memorial Trail

## The Northern Pilgrimage through Pennsylvania A Trail Alignment Study

Funded by:

The Pennsylvania Department of  
Conservation of Natural Resources

The Community Foundation for the Alleghenies  
September 11th National Memorial Trail Alliance



September 11th National Memorial Trail Alliance

CT  
&C

# The September 11th National Memorial Trail



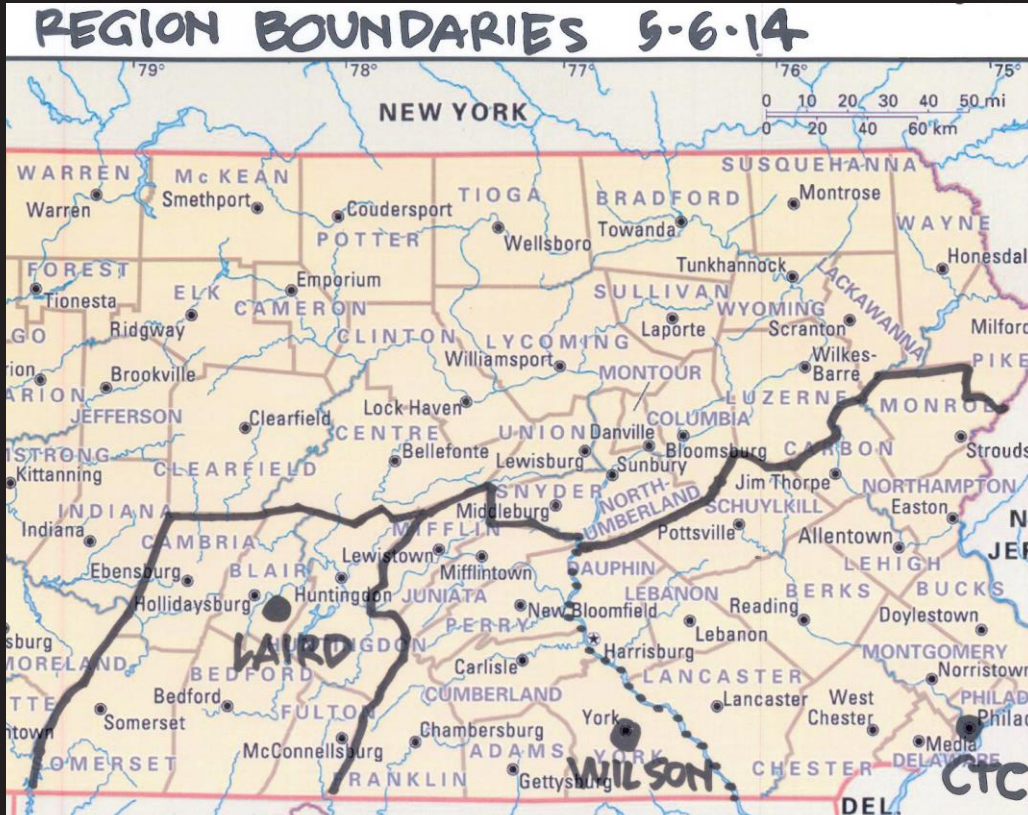
September 11th National Memorial Trail Alliance

CT  
&C



# The September 11th National Memorial Trail

*How do you plan for a 500+ mile trail route?*



- How did we organized a project team?
- How did we coordinate and assess government & public stakeholder input?
- What should the trail represent?
- Who are the user groups?
- What makes this a “pilgrimage” trail?



September 11th National Memorial Trail Alliance

CT  
&C



# The September 11th National Memorial Trail



September 11th National Memorial Trail Alliance

CT  
&C



# The September 11th National Memorial Trail

## *Inventory & Analysis*

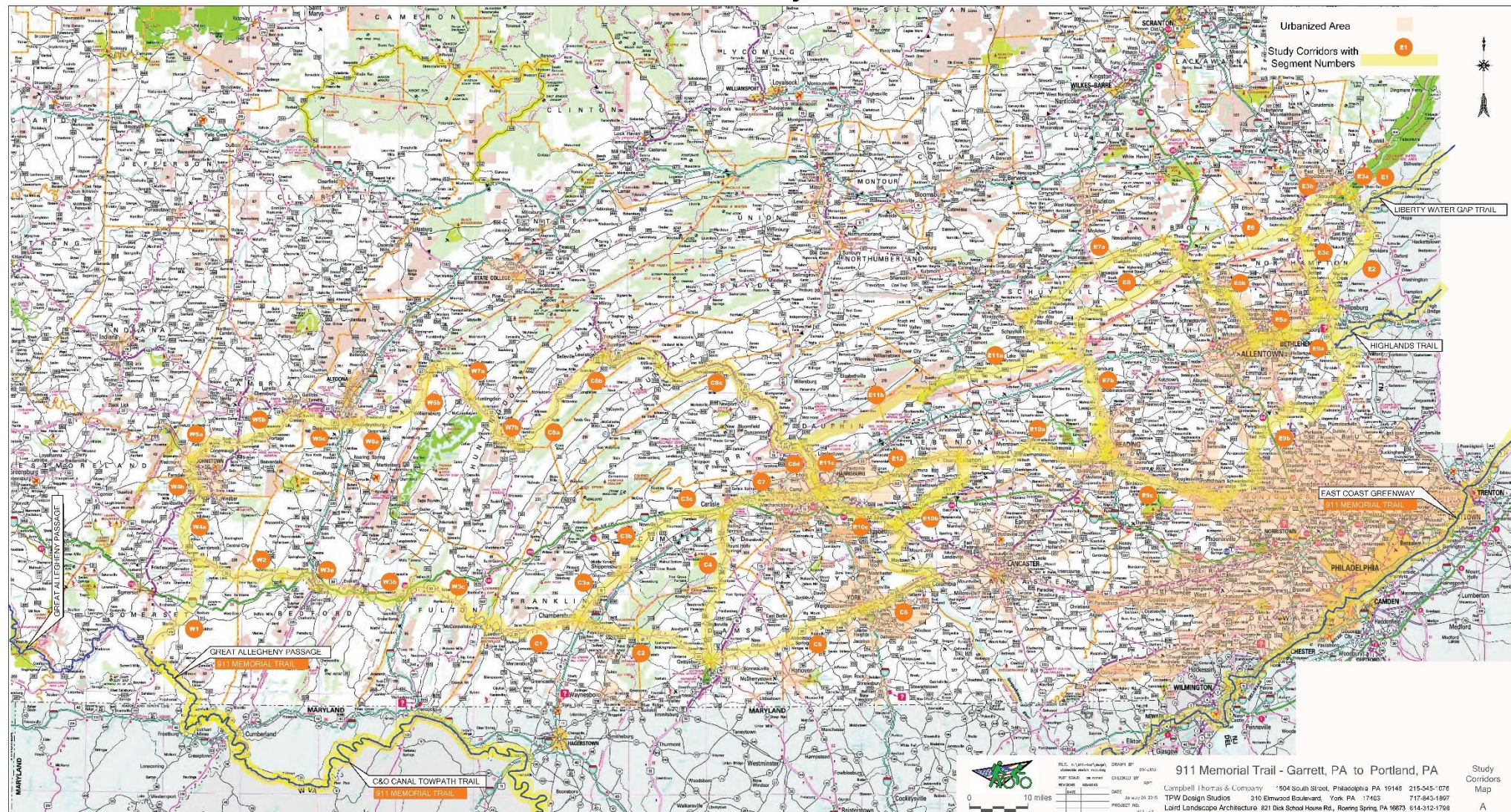


September 11th National Memorial Trail Alliance

CT  
&C

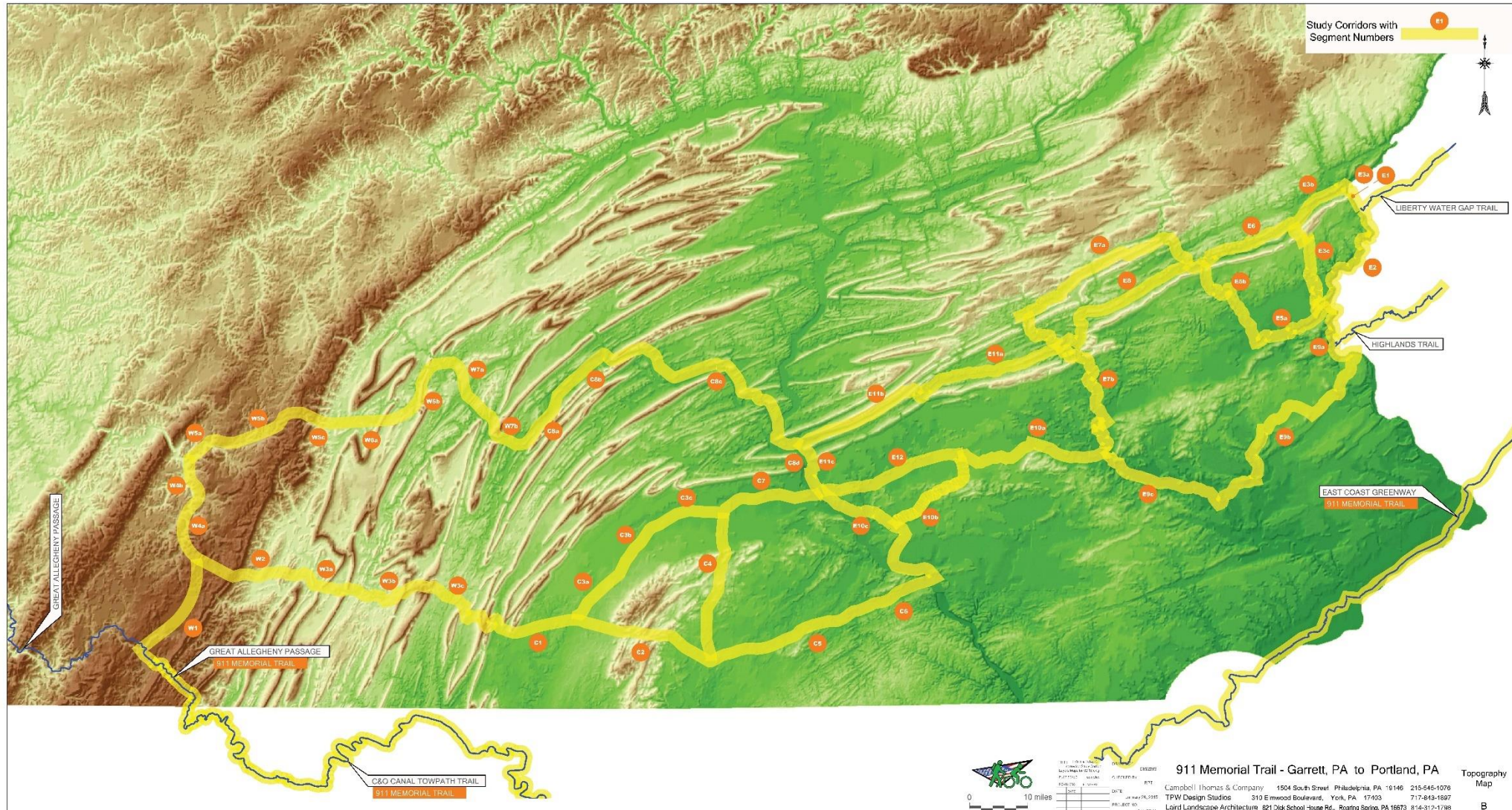


# Statewide Study Corridors



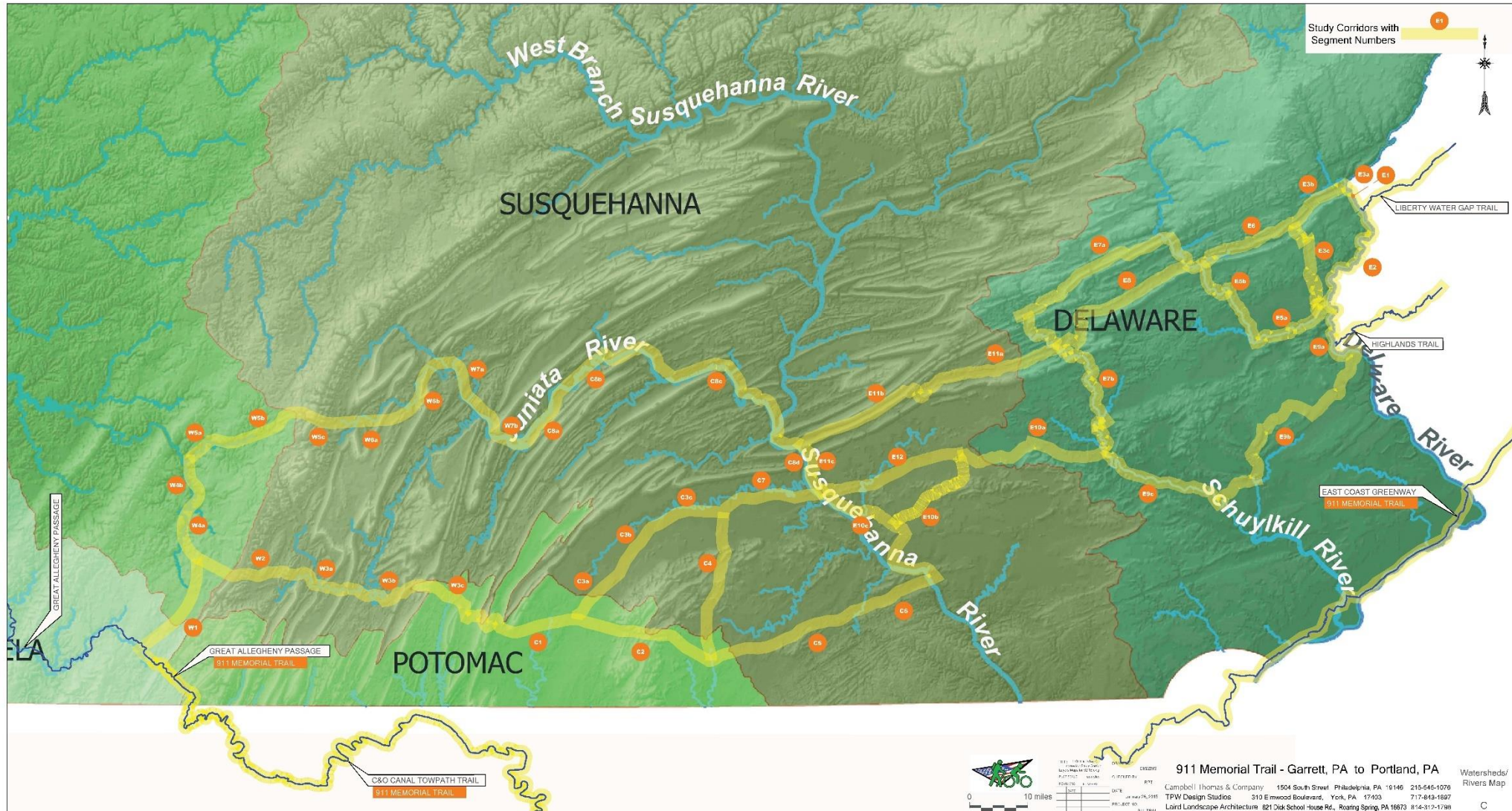


# Topography





# Watersheds and Major Rivers

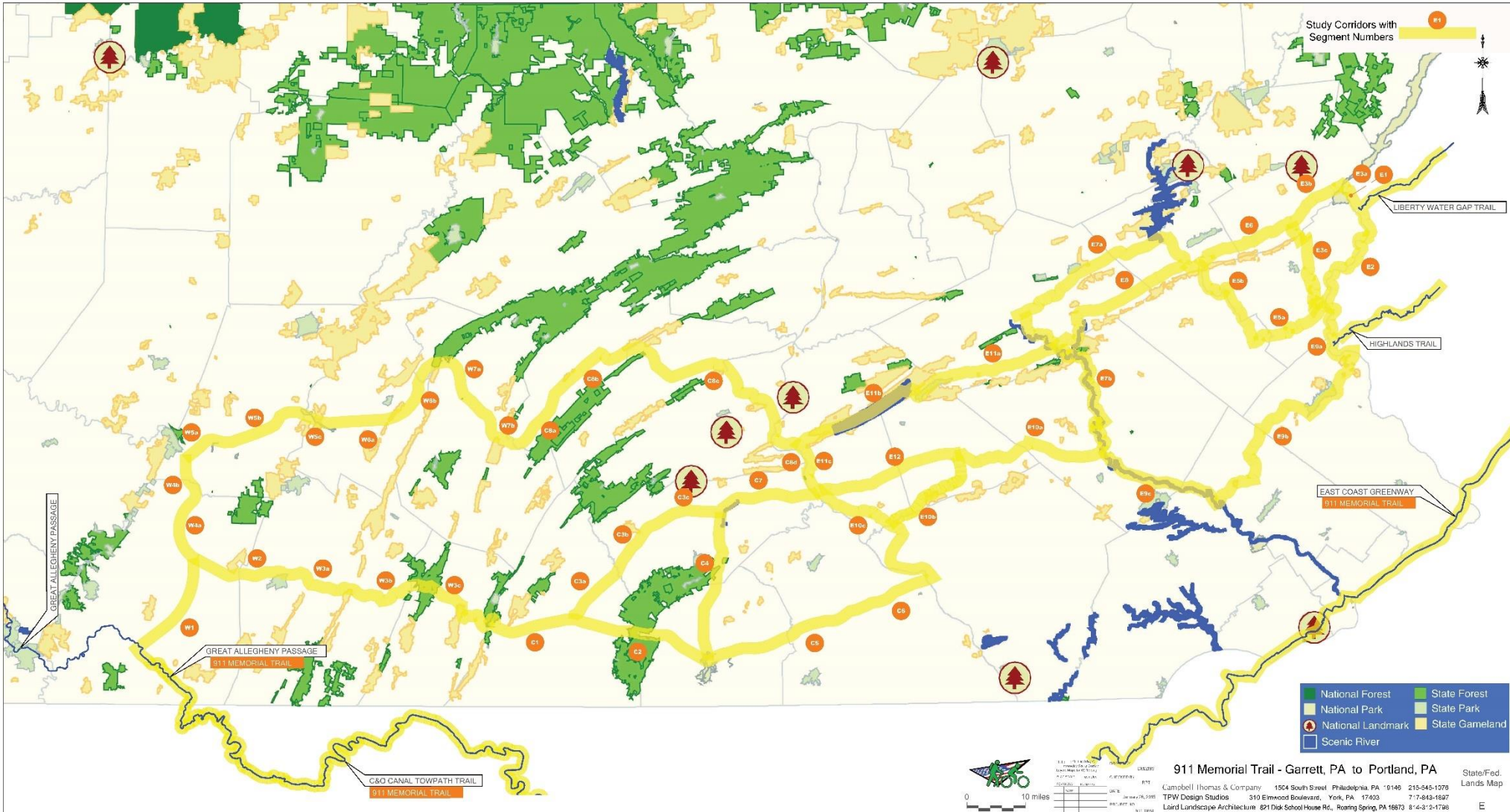




# Population Centers

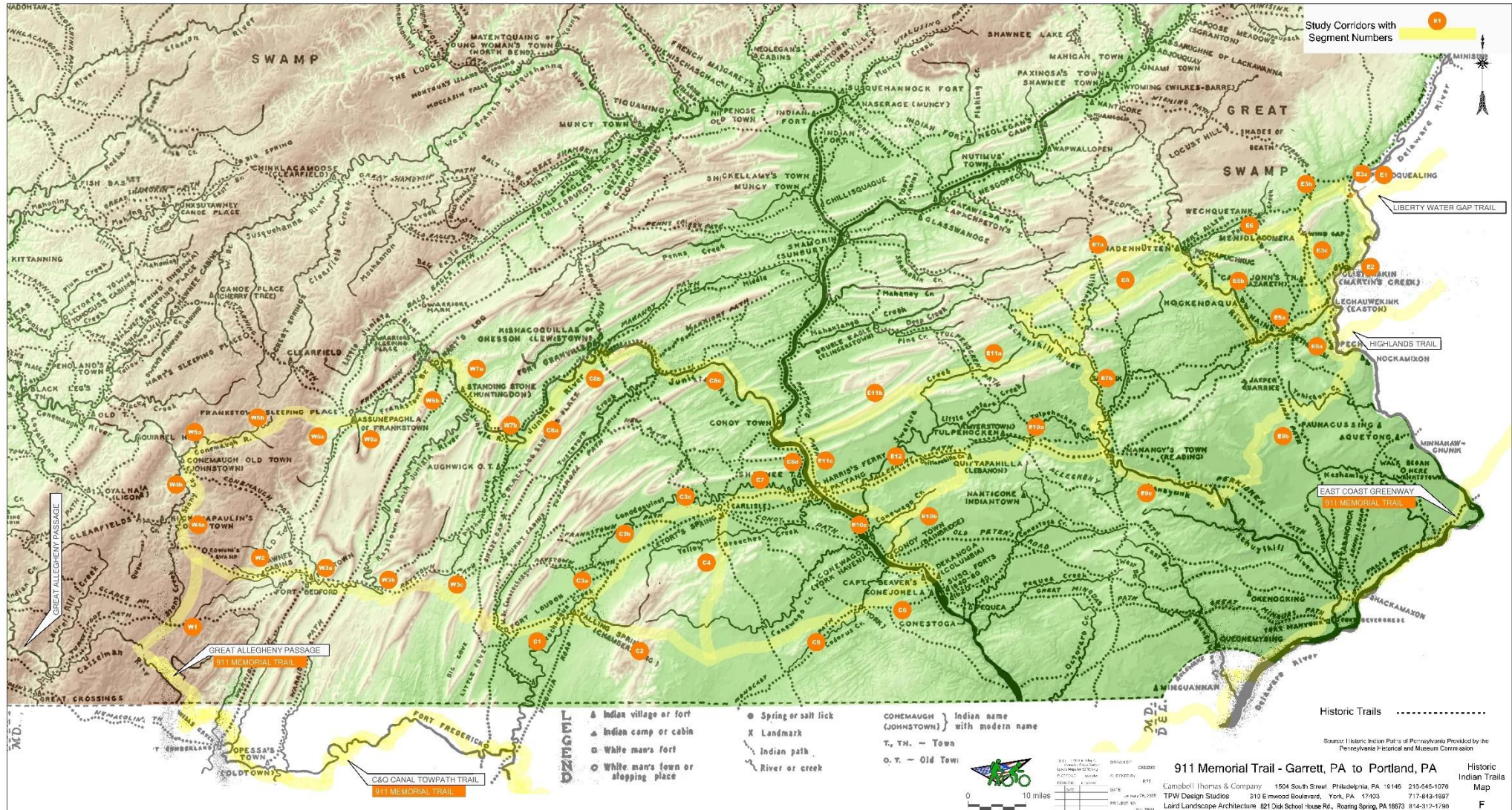


## State and Federal Lands



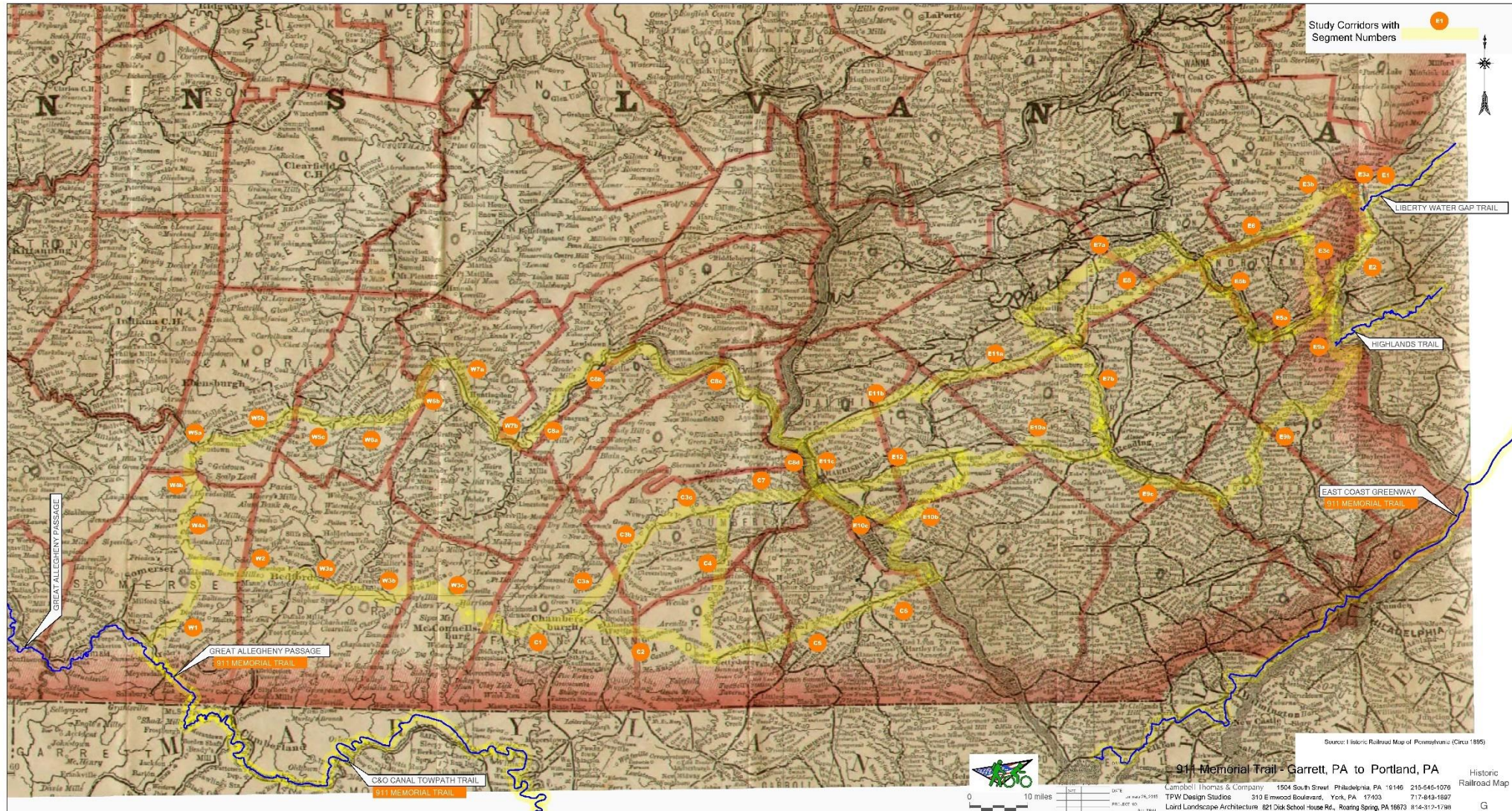


# Historic Indian Trails





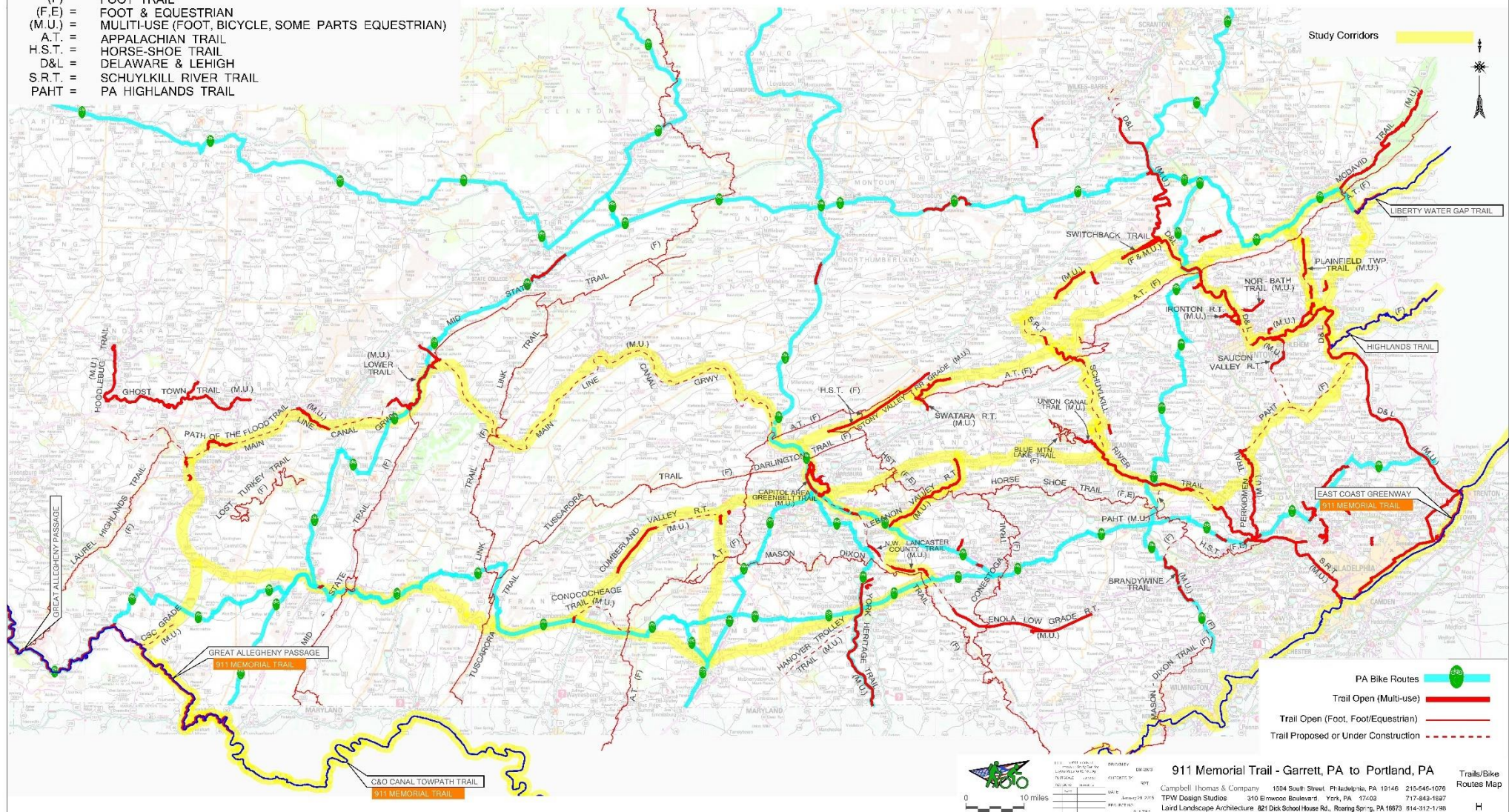
# Historic PA Railroads





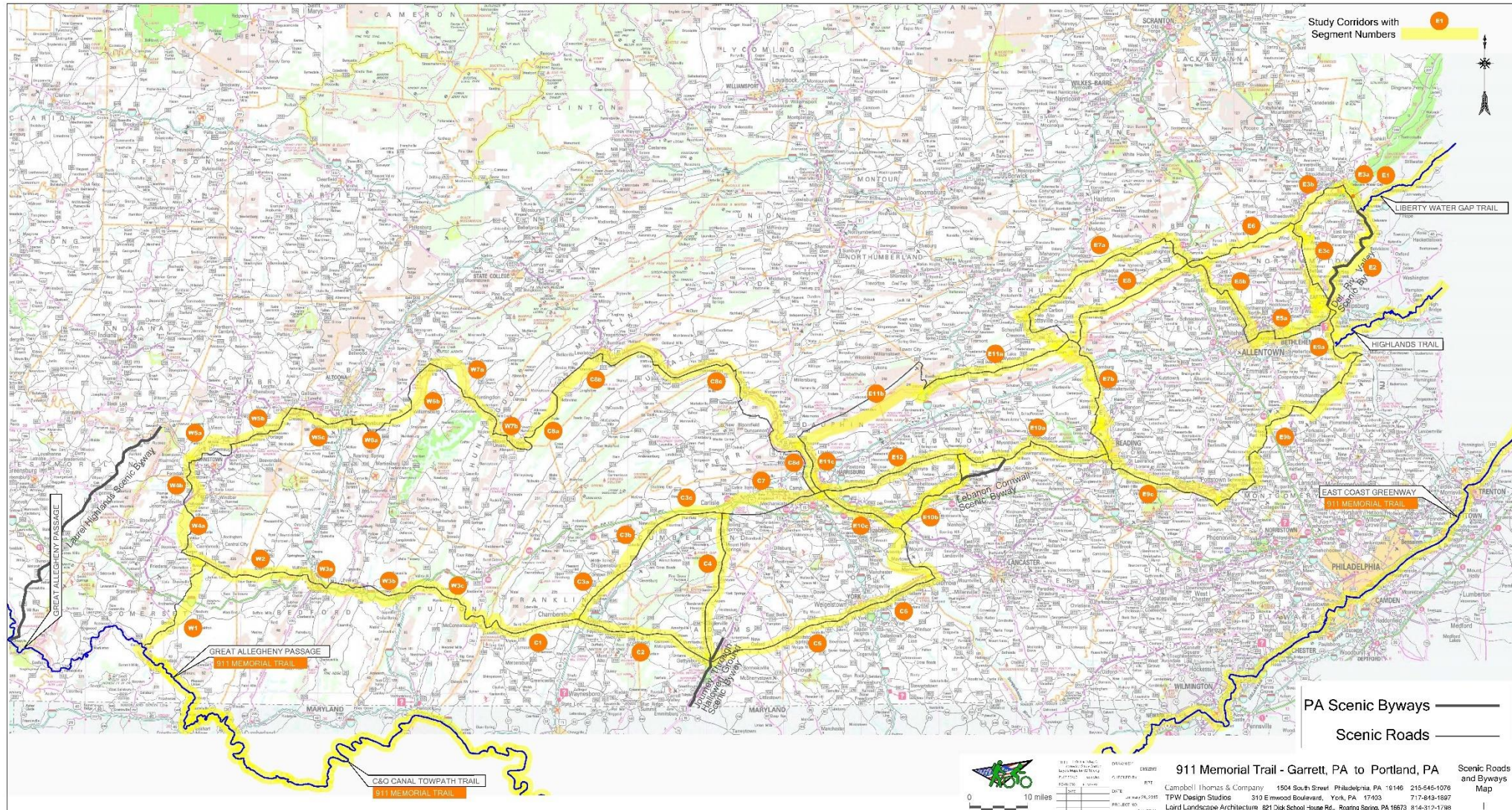
# Trail and Bicycle Routes

- R.T. = RAIL TRAIL
- (F) = FOOT TRAIL
- (F.E) = FOOT & EQUESTRIAN
- (M.U.) = MULTI-USE (FOOT, BICYCLE, SOME PARTS EQUESTRIAN)
- A.T. = APPALACHIAN TRAIL
- H.S.T. = HORSE-SHOE TRAIL
- D&L = DELAWARE & LEHIGH
- S.R.T. = SCHUYLKILL RIVER TRAIL
- PAHT = PA HIGHLANDS TRAIL



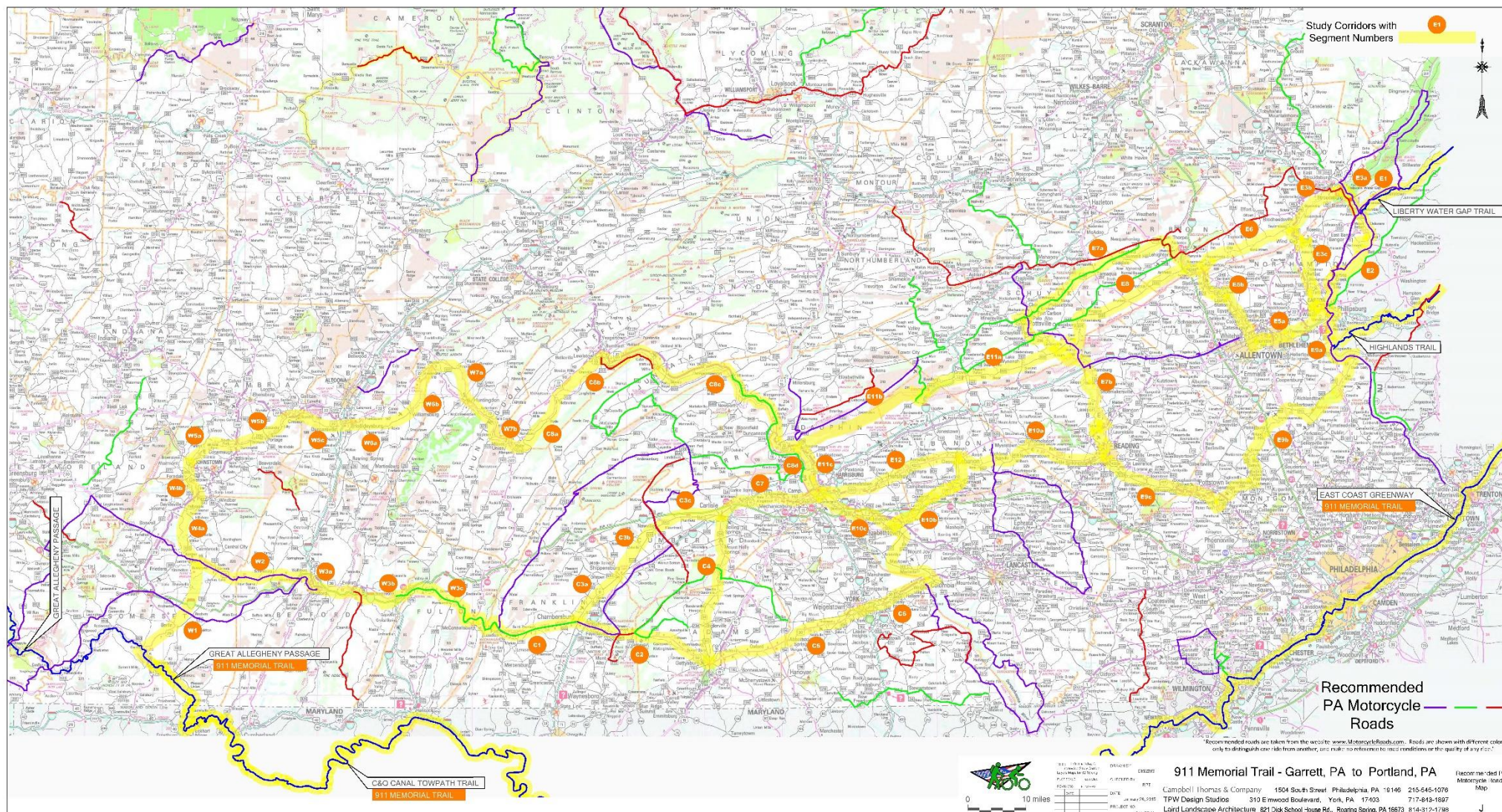


# PA Scenic Roads and Byways





# Recommended PA Motorcycle Roads





Transportation Center (Train & Bus)

Amtrak & Stations

Local Bus Routes & Terminals & Major Stops

Express Bus Routes & Stops

Ferry

Local Services Available Within This Town

L.S.

Study Corridors

LIBERTY WATER GAP TRAIL

HIGHLANDS TRAIL

EAST COAST GREENWAY

911 MEMORIAL TRAIL

PHILADELPHIA

CAMDEN

WILMINGTON

911 MEMORIAL TRAIL

C&O CANAL TOWPATH TRAIL

911 MEMORIAL TRAIL

0 10 miles

911 Memorial Trail - Garrett, PA to Portland, PA

Campbell Thomas & Company 1554 South Street, Philadelphia, PA 19146 215-546-1076

TPW Design Studio 310 Elmwood Boulevard, York, PA 17403 717-443-1697

Laird Landscape Architecture 821 Dick School House Rd., Roaring Spring, PA 16673 814-312-1748

Public Transportation Service Map

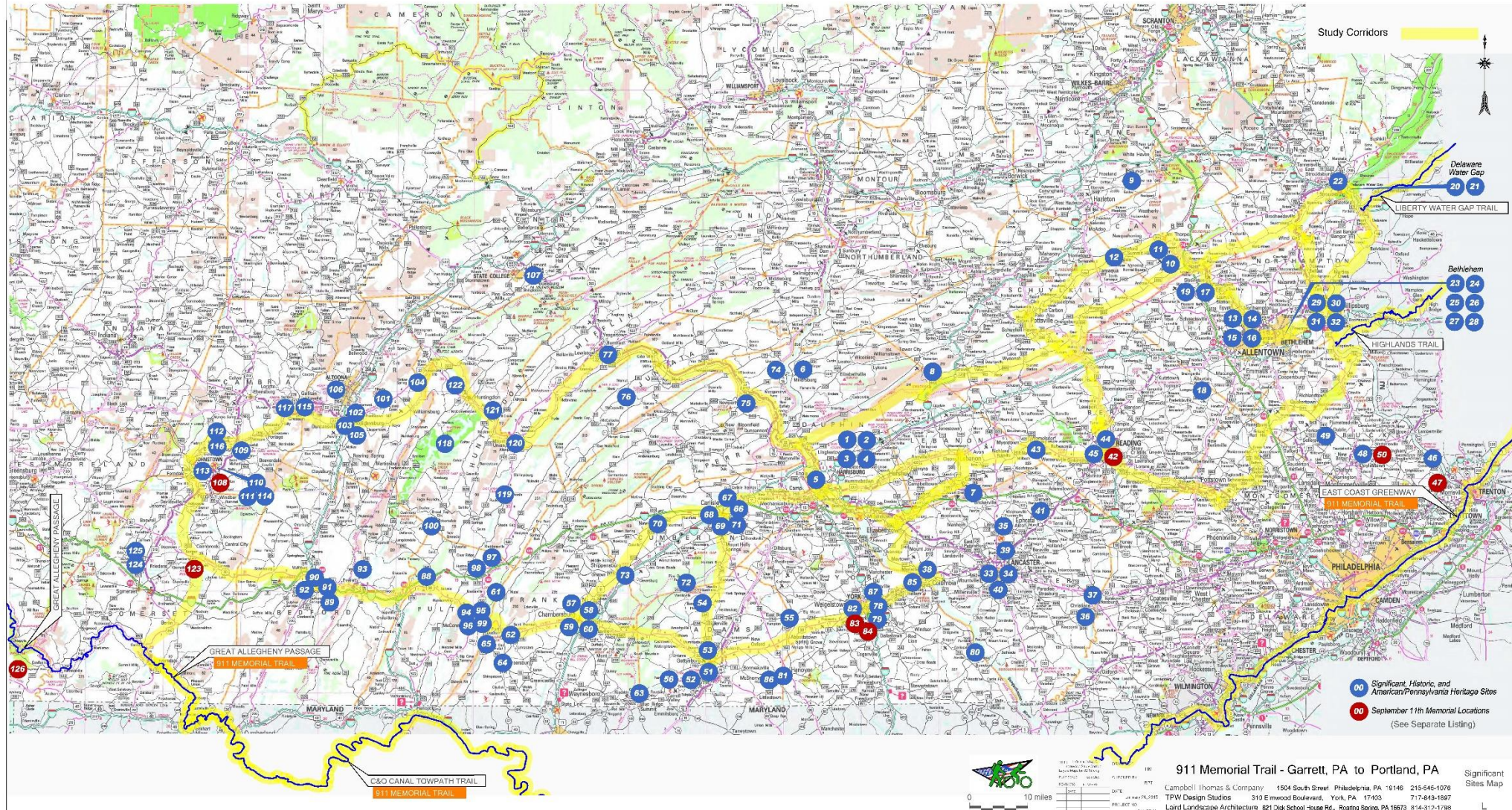
Public Transit  
Service Map

Campbell Thomas & Company	1504 South Street, Philadelphia, PA 19146	215-545-1076
TPW Design Studios	310 Elmwood Boulevard, York, PA 17403	717-843-1697
Laird Landscape Architecture	821 Disk School House Rd., Roaring Spring, PA 16673	814-312-1798

ic Transit  
vice Map



# Significant Sites





# The September 11th National Memorial Trail

## *Proposed Corridors and Alternatives*

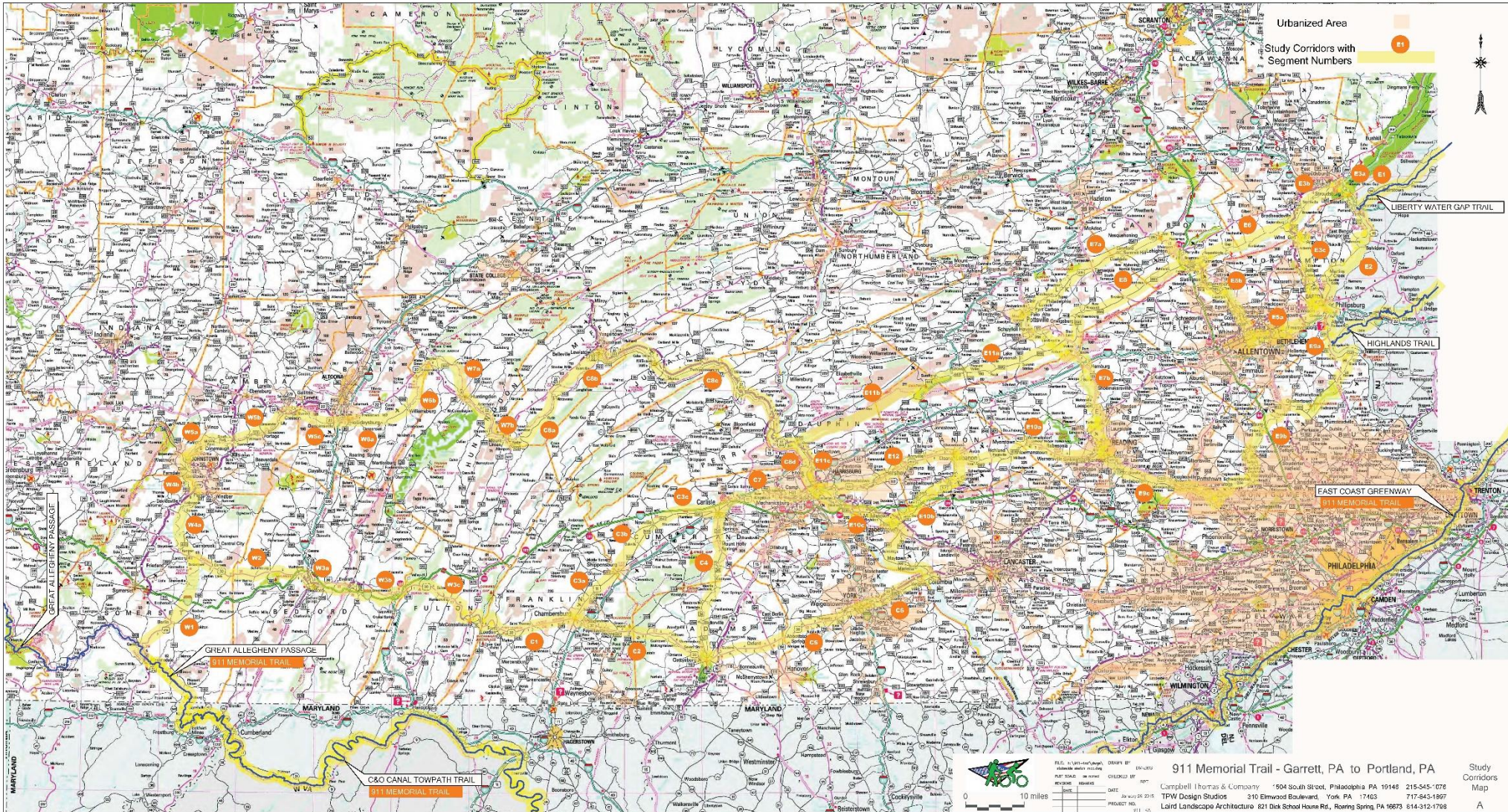


September 11th National Memorial Trail Alliance

CT  
&C



# Statewide Study Corridors





# The September 11th National Memorial Trail



*The Delaware Water Gap*  
George Innes

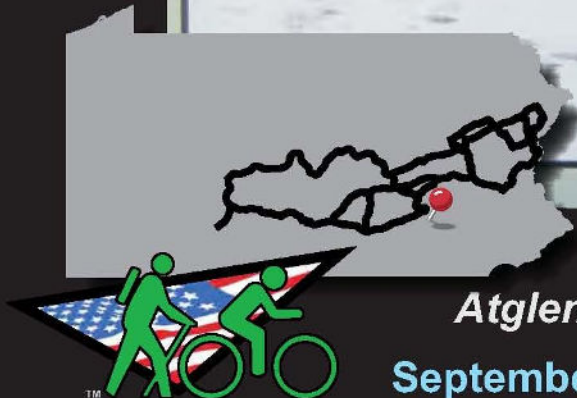
September 11th National Memorial Trail Alliance



# The September 11th National Memorial Trail



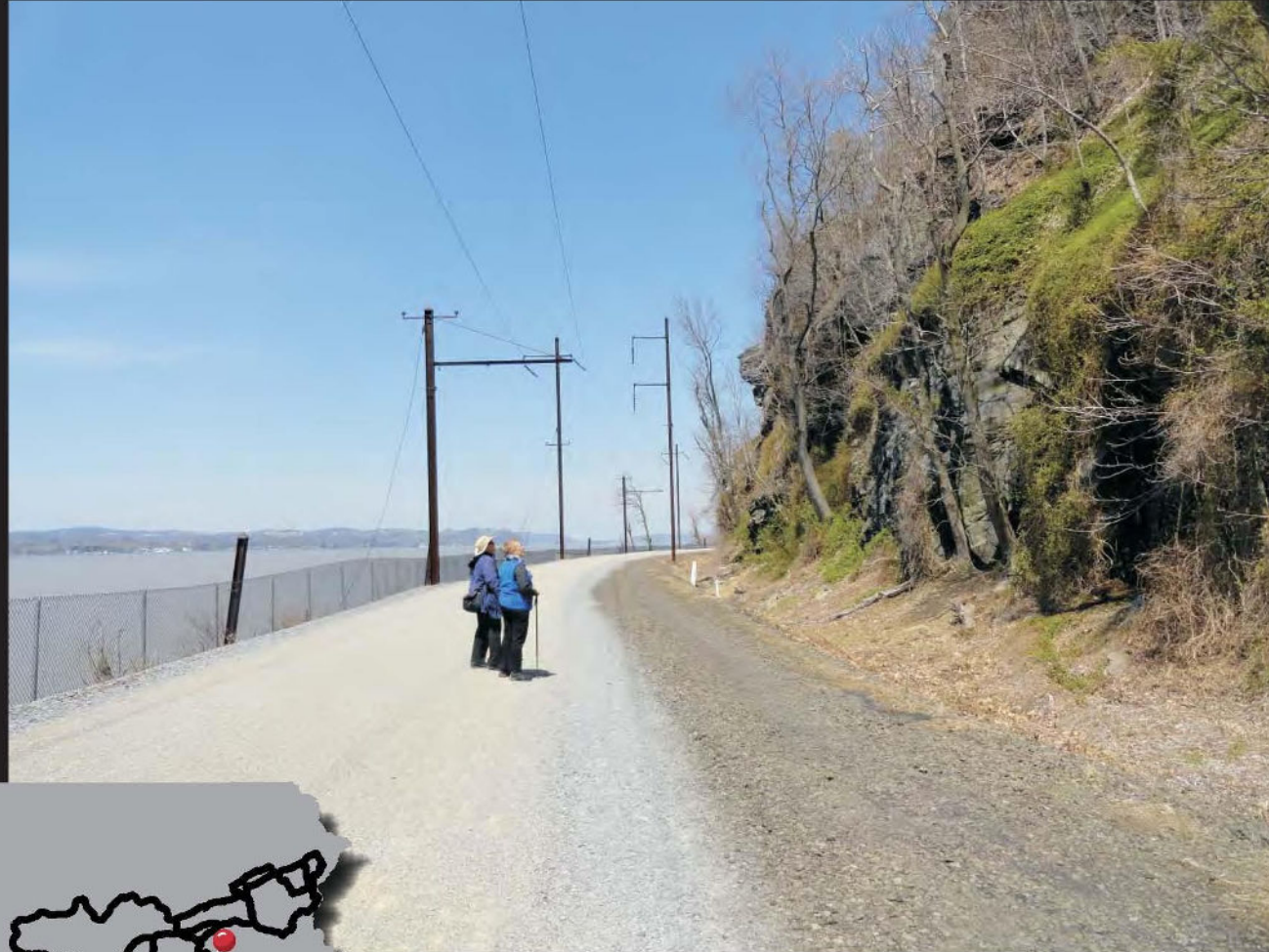
Columbia Historic Preservation Society, Columbia, PA.



*Atglen and Susquehanna RR Construction*  
**September 11th National Memorial Trail Alliance**



# The September 11th National Memorial Trail



*Enola Low Grade Line Trail*

September 11th National Memorial Trail Alliance



# The September 11th National Memorial Trail



*Columbia Wrightsville Bridge  
Lincoln Highway*

**September 11th National Memorial Trail Alliance**



# The September 11th National Memorial Trail



*RR Bridge over Kreutz Creek  
paralleling Rt. 462 east of York*

**September 11th National Memorial Trail Alliance**



# The September 11th National Memorial Trail



*Monument to the  
42nd New York Infantry  
Gettysburg*

September 11th National Memorial Trail Alliance



# The September 11th National Memorial Trail

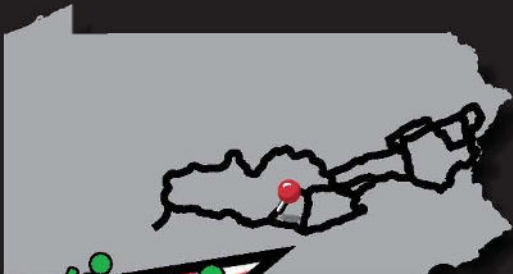


*Route 30 Entering Gettysburg from the West*

September 11th National Memorial Trail Alliance



# The September 11th National Memorial Trail



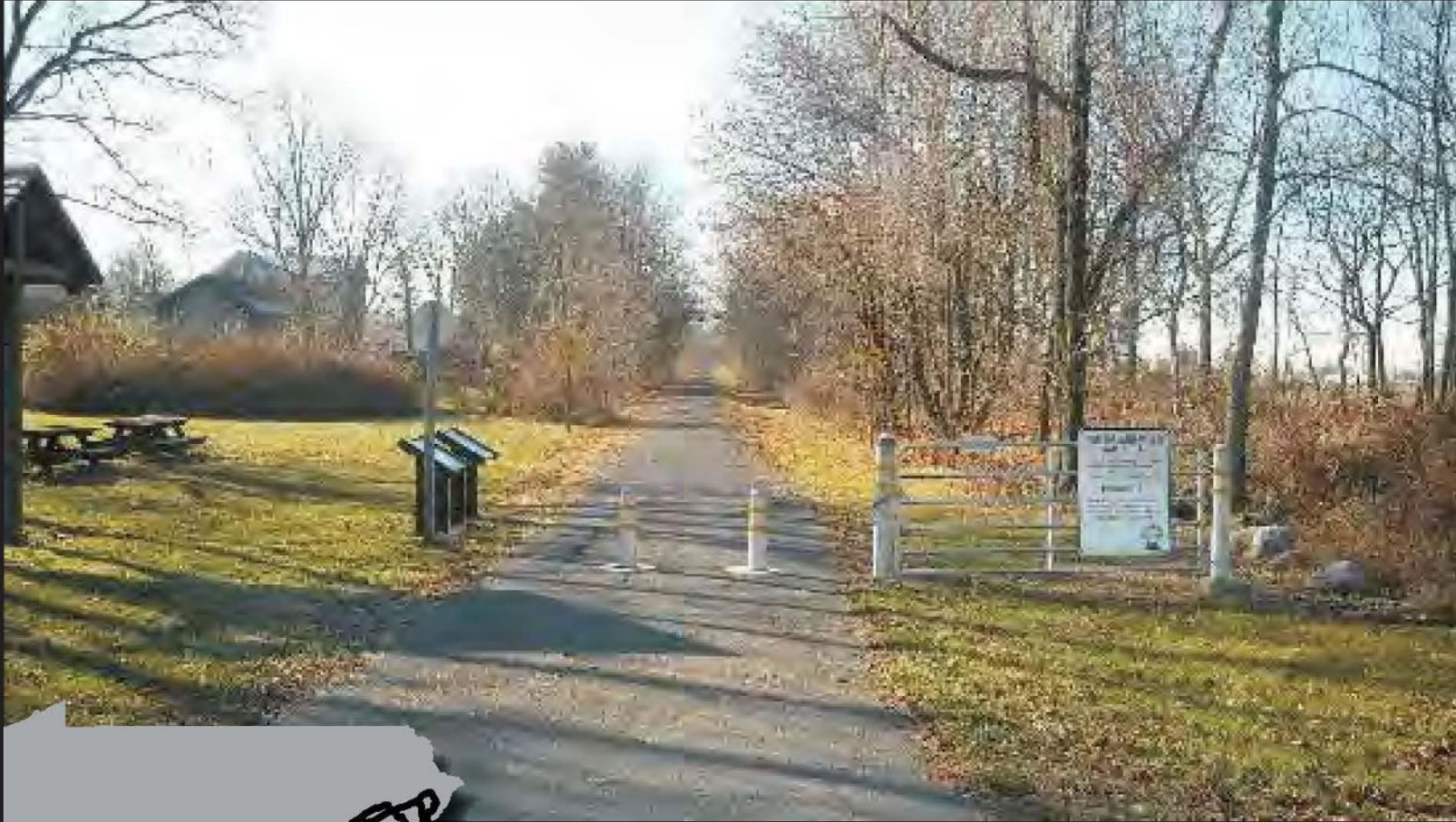
*Route 11 between Chambersburg and Shippensburg*



**September 11th National Memorial Trail Alliance**



# The September 11th National Memorial Trail



*Cumberland Valley Rail Trail*

September 11th National Memorial Trail Alliance



# The September 11th National Memorial Trail



*Pine Grove Furnace*

September 11th National Memorial Trail Alliance



# The September 11th National Memorial Trail



*Route 34 South of Mount Holly Springs*

September 11th National Memorial Trail Alliance



# The September 11th National Memorial Trail



*Downtown Carlisle*



September 11th National Memorial Trail Alliance



# The September 11th National Memorial Trail



*West Shore Diner  
Lemoyne*

September 11th National Memorial Trail Alliance



# The September 11th National Memorial Trail



*Wormleysburg to City Island Harrisburg Bridge*

September 11th National Memorial Trail Alliance

CT  
&C



# The September 11th National Memorial Trail



*Millersburg Ferry and the Susquehanna River*

September 11th National Memorial Trail Alliance



# The September 11th National Memorial Trail



*Towpath - Juniata Canal  
Perry County*

**September 11th National Memorial Trail Alliance**



# The September 11th National Memorial Trail



*Newport Town Square*

September 11th National Memorial Trail Alliance



# The September 11th National Memorial Trail



*Johnstown Flood National Memorial Exhibit*

September 11th National Memorial Trail Alliance



# The September 11th National Memorial Trail



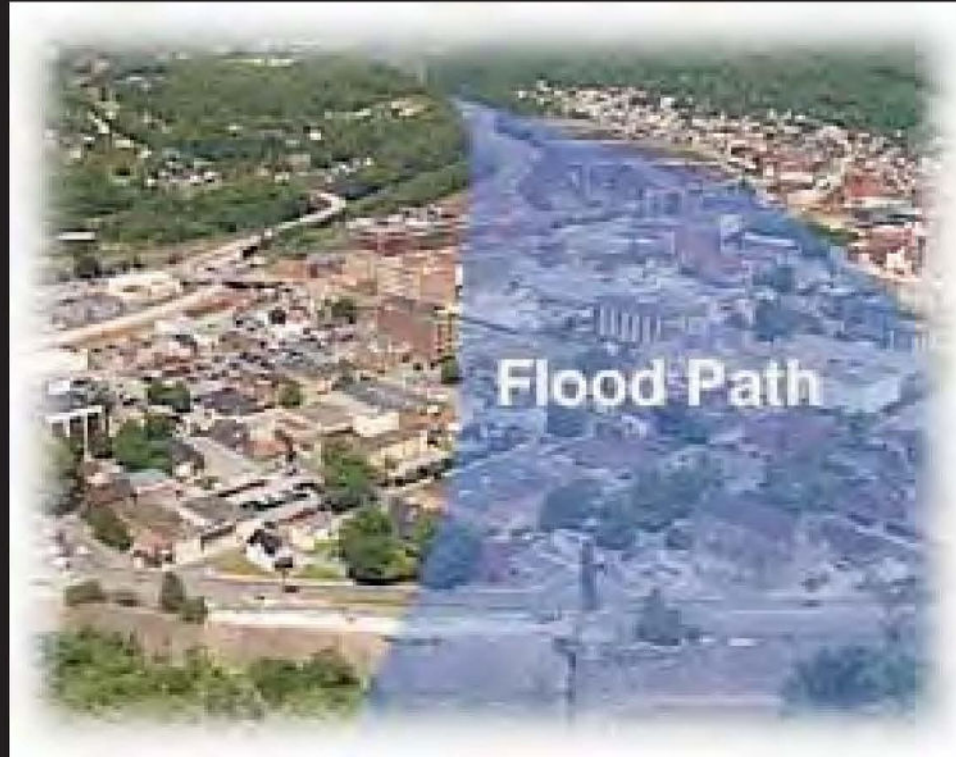
*Johnstown Inclined Plane*



September 11th National Memorial Trail Alliance



# The September 11th National Memorial Trail

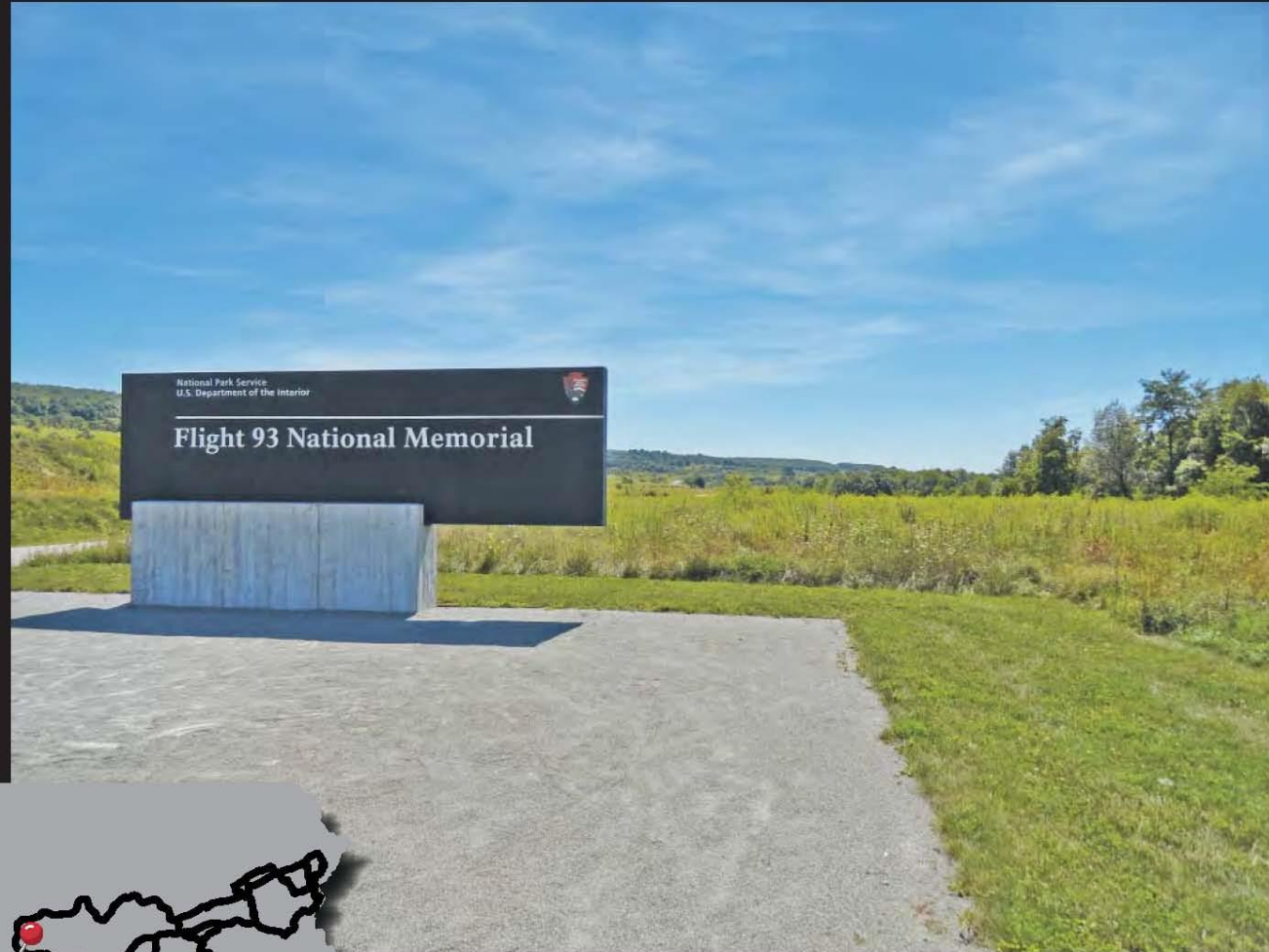


*Johnstown Flood Path*

September 11th National Memorial Trail Alliance



# The September 11th National Memorial Trail



*Entrance to  
Flight 93 National Memorial*

**September 11th National Memorial Trail Alliance**



# The September 11th National Memorial Trail



*Flight 93 National Memorial*

September 11th National Memorial Trail Alliance



# The September 11th National Memorial Trail

## *Examples of Pilgrimage Trails*



September 11th National Memorial Trail Alliance

CT  
&C





## Camino de Santiago de Compostela



September 11th National Memorial Trail Alliance

CT  
&C





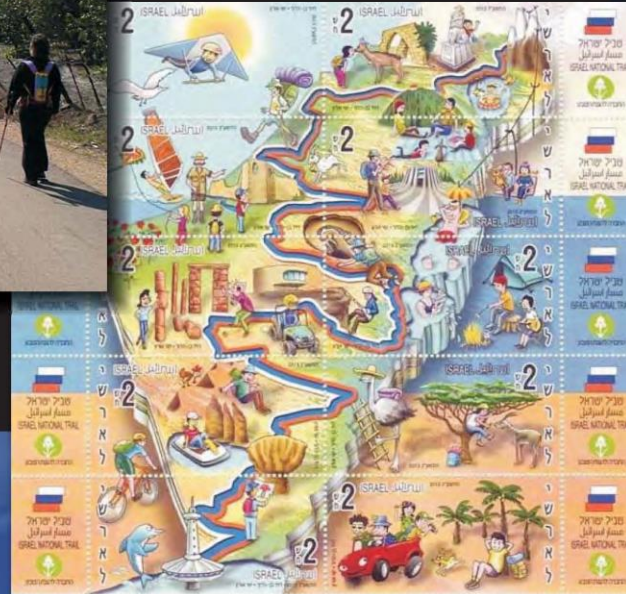
## Camino de Santiago de Compostela

September 11th National Memorial Trail Alliance



CT  
&C





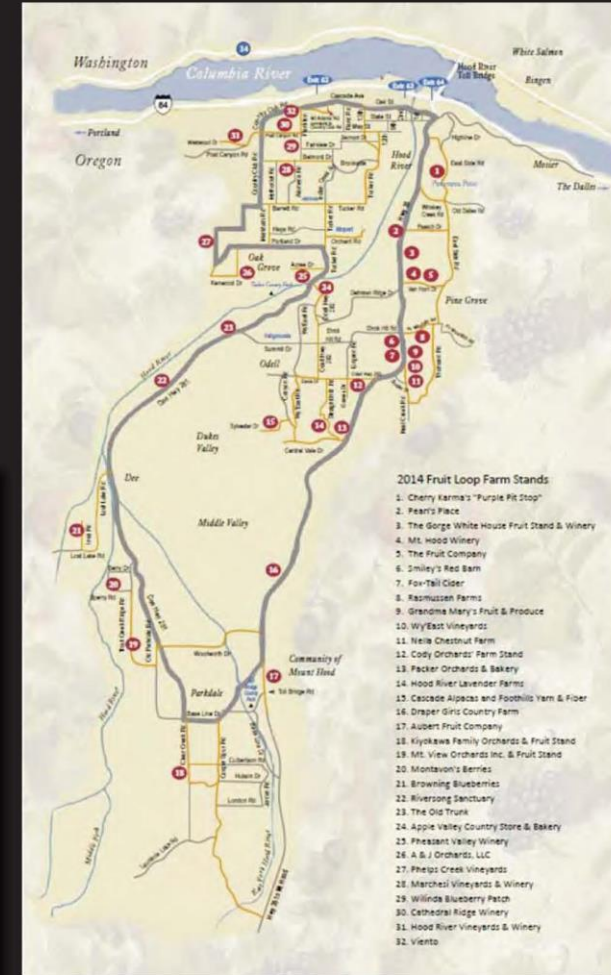
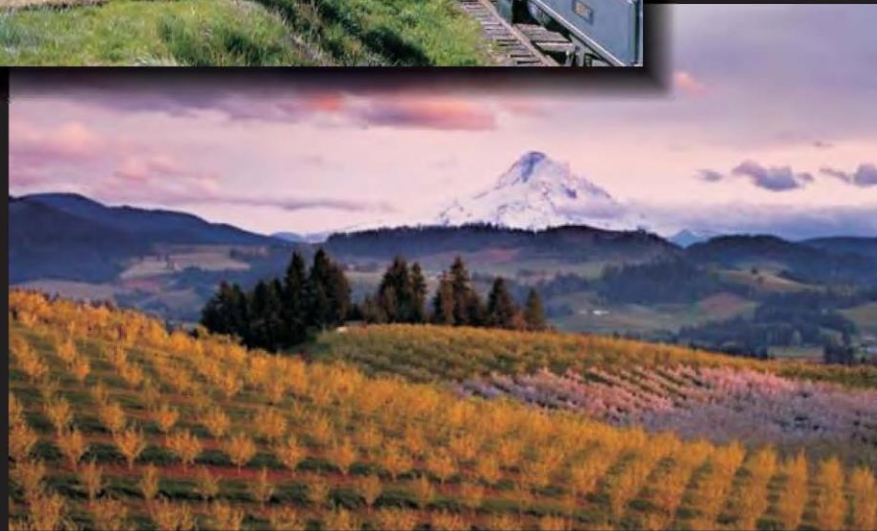
## Israel National Trail



September 11th National Memorial Trail Alliance

CT  
&C





**Hood River County Fruit Loop  
Oregon**

**September 11th National Memorial Trail Alliance**

**CT  
&C**



# The September 11th National Memorial Trail

## *Selecting an Alignment*

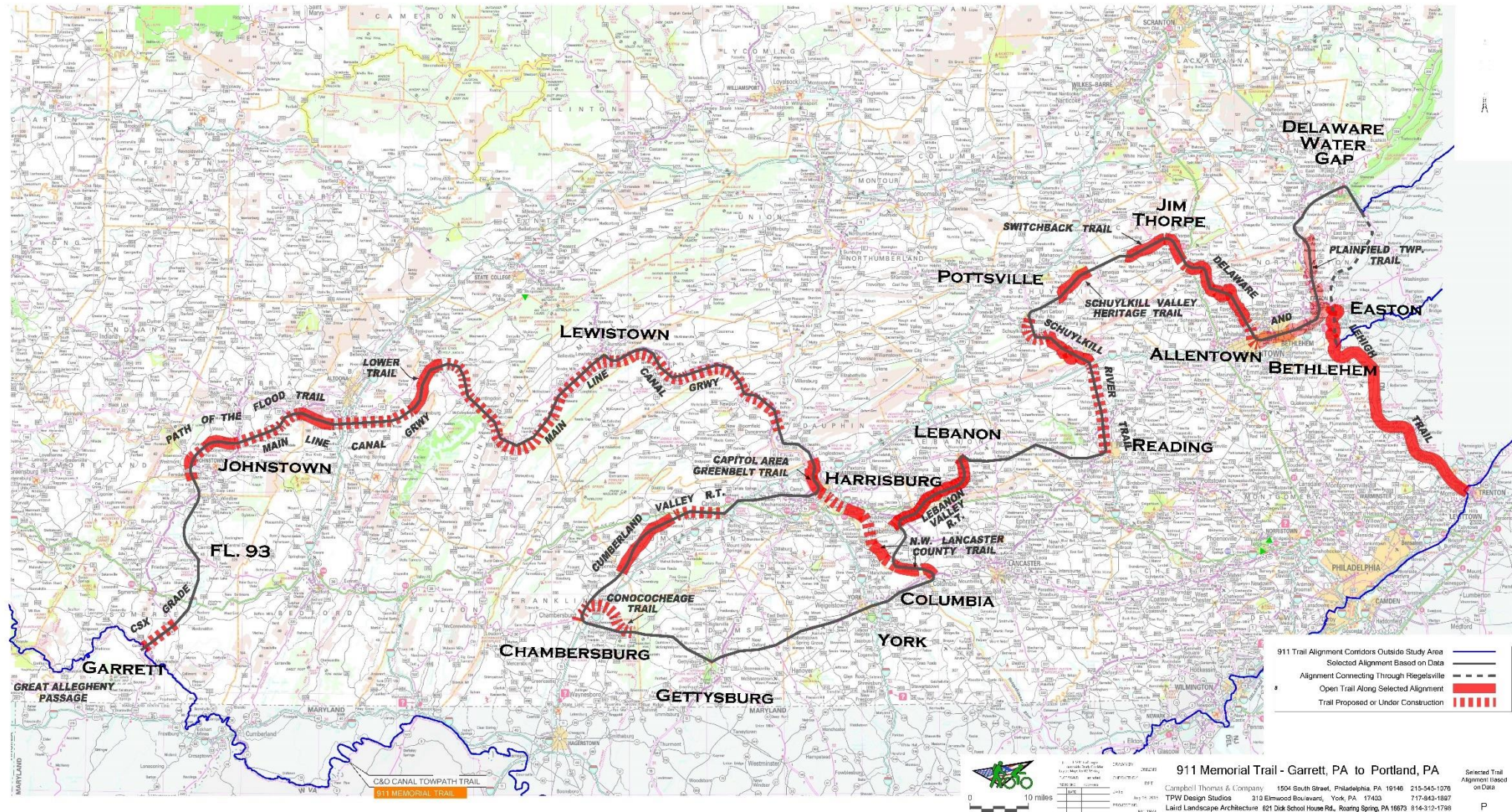


September 11th National Memorial Trail Alliance

CT  
&C



# 911 Steering Committee Selected Alignment Based on Data





# The September 11th National Memorial Trail

## *Outlining Potential Management Entities*



September 11th National Memorial Trail Alliance

CT  
&C



# **The September 11th National Memorial Trail**

## ***Examples of Long-Distance Trail Management in Pennsylvania***

- **The Appalachian Trail Conservancy** – Organized Regional Management, AT Maintaining Clubs and Agency Partners.
- **The Great Allegheny Passage** – The Allegheny Trail Alliance: a coalition of 7 trail organizations that maintain the 150 mile trail.
  - Mountain Maryland Trails
  - Somerset County Rails to Trails Association
  - Ohiopyle State Park
  - Regional Trail Corporation
  - Steele Valley Trail Council
  - Friends of the Riverfront
  - Montour Trail Council
- **The East Coast Greenway Alliance** - Supported and Managed by a staff of National / Regional Coordinators and a Trail Ambassador Program.

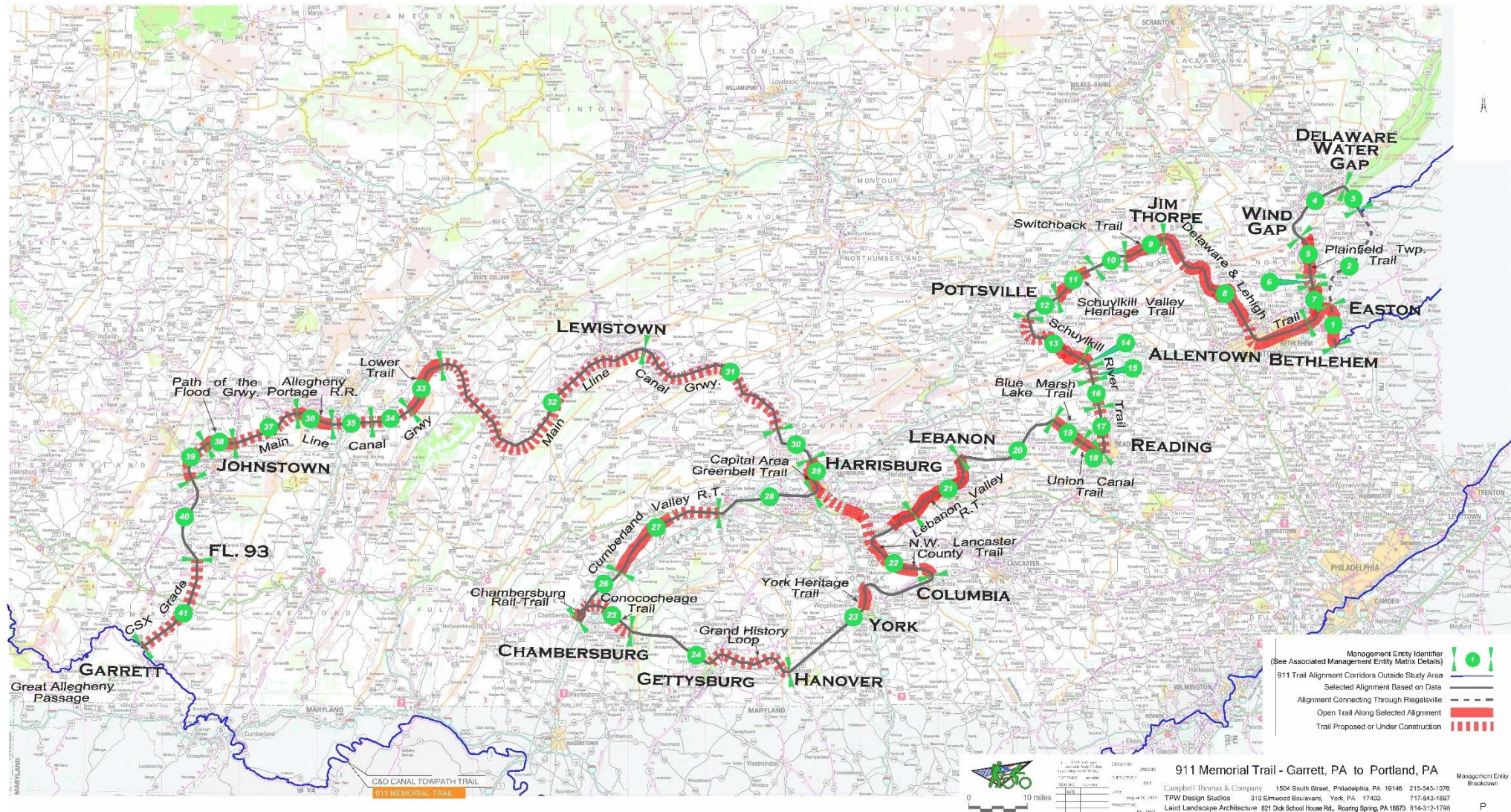


**September 11th National Memorial Trail Alliance**

**CT  
&C**



# Management Entity Breakdown for the 911 National Memorial Trail





# **The September 11th National Memorial Trail**

## ***A Developing Network Promoting and Linking Local Trails***

- **The Great Allegheny Passage to Flight 93 National Memorial**
- **Conococheague Trail in Green Township, PA**
- **Main Line Canal Greenway connecting Lower Trail to Lewistown**
- **The Grand History Loop from Hanover to Gettysburg**
- **The Conewago Trail from Falmouth to Elizabethtown**
- **The Schuylkill River Trail – Missing Sections from Pottstown to Reading**
- **Bushkill Creek Bridge between Tatamy and Stockertown**



**September 11th National Memorial Trail Alliance**

**CT  
&C**



# The September 11th National Memorial Trail

## *Marketing and Promotion*



September 11th National Memorial Trail Alliance

CT  
&C



Follow ultra distance runner Jan Walker in her Rise Up for the Fallen: Run Across America, beginning March 1 in Oceanside, CA, and arriving this summer at the Pentagon Memorial, Arlington County, VA. Jan is running to raise awareness and donations for the September 11th National Memorial Trail!

[CLICK TO READ MORE](#) or [CLICK TO DONATE](#)



[HOME](#)

[TRAIL MAPS](#) ▾

[MEDIA](#) ▾

[THE MEMORIALS](#) ▾

[MEMBERSHIP](#)

[ABOUT US](#)

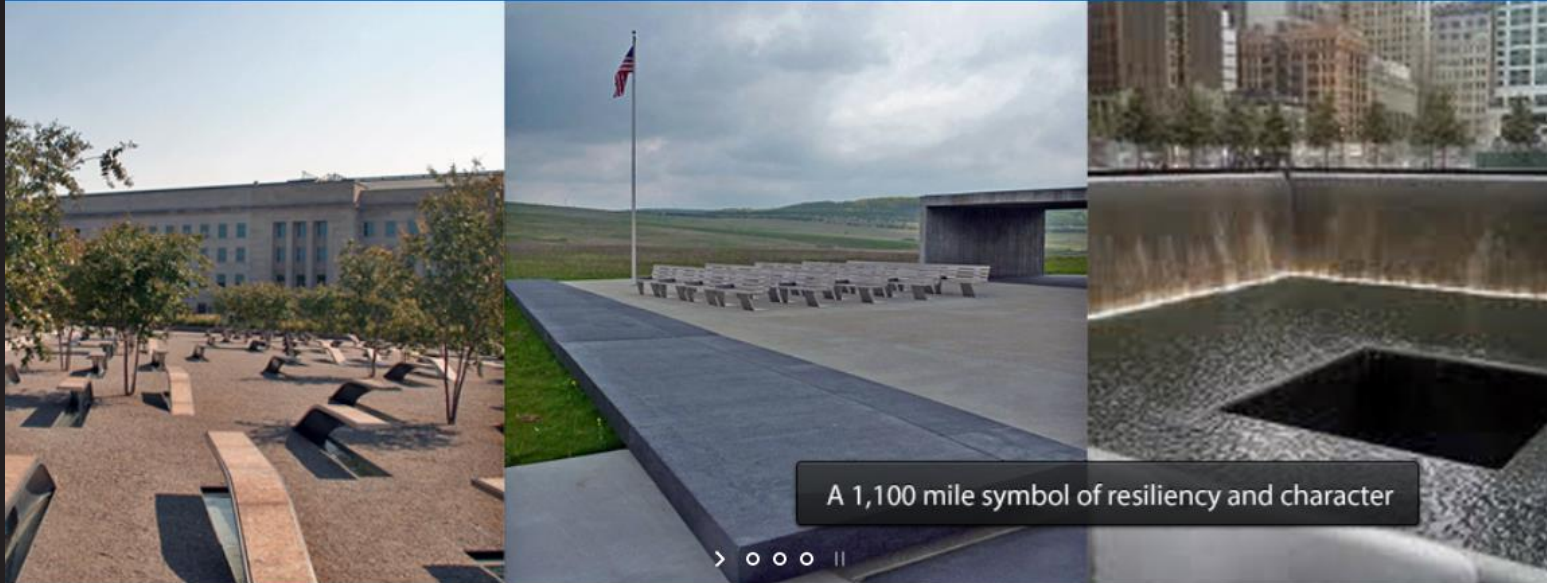
[THE BOARD](#)

[LINKS](#)

[CONTACT US](#)

[EVENTS](#)

Search



In The News

The trail is as much about those before us who demonstrated the resilience and perseverance that makes America great as it is about our majestic landscapes.



Explore The Trail

The September 11th National Memorial Trail connects some of our country's most beautiful landscapes and sights, we invite you to explore it today and see for yourself.



Donate Today

We hope that you will consider joining our 501 (c) (3) non-profit organization as we partner with the National Park Service and state and local governments, and other organizations. [Click Here for More Information](#)

## Support The September 11th National Memorial Trail

Get involved with the trail today by becoming a member, with just a few clicks.

[Sign Up Now!](#)



**911 Trail Website:**  
**[www.911trail.org](http://www.911trail.org)**



## Rise Up for the Fallen: A 9/11 National Memorials Run Across America is on Facebook.

To connect with Rise Up for the Fallen: A 9/11 National Memorials Run Across America, sign up for Facebook today.

Sign Up

Log In



September 11th  
Memorial Trail

Rise Up for the Fallen: A 9/11 National Memorials Run Across America  
Non-Profit Organization

Timeline

About

Photos

Videos

Likes

## PEOPLE

789 likes

## ABOUT

<http://www.911trail.org/>

Non-Profit Organization

## PHOTOS



### Rise Up for the Fallen: A 9/11 National Memorials Run Across America

February 29 at 3:54pm · 🌐

Ok, so this is the important post. I am pinning it to the top so it will always come up first when viewing the page.

Here is my SPOT tracking link. If you want to check to see where I am on the route as I run, this is where you will go to do that: <http://tinyurl.com/hmh47ms>

(it will go live at 6:15am Pacific and 9:15 Eastern Time on March 1)  
The big map at the top of this page shows the general route I will be taking. There will be slight deviations, but it's a good over... See More

Jack Fussell Sr., Lisa Van Camp Reader, Mary N Bob Kauffman and 31 others like this.

4 shares

View 5 more comments



Rise Up for the Fallen: A 9/11 National Memorials Run Across America I should be through there before then. Just keep a watch on my tracker and contact me when you see I'm getting close. Would love the company 😊

👍 2 · March 4 at 9:04pm

Donna Smallin Kuper Okay! Following you.

👍 2 · March 4 at 9:05pm



Jeanne Renfro Awesome!

March 5 at 7:32pm



### Rise Up for the Fallen: A 9/11 National Memorials Run Across America

# *“Rise Up for the Fallen: A 9/11 National Memorials Run Across America”*

- Jan Walker is currently running from Oceanside, CA, to the Pentagon Memorial.
- SPOT, a GPS personal tracking application, where Jan's daily progress can be followed:

<http://tinyurl.com/hmh47ms>





	S	M	T	W	T	F	S
JAN	3	4	5	6	7	8	9
	10	11	12	13	14	15	16
	17	18	19	20	21	22	23
	24	25	26	27	28	29	30
FEB	31	1	2	3	4	5	6
	7	8	9	10	11	12	13
	14	15	16	17	18	19	20
	21	22	23	24	25	26	27
MAR	28	29	1	2	3	4	5
	6	7	8	9	10	11	12
	13	14	15	16	17	18	19
	20	21	22	23	24	25	26
	27	28	29	30	31		
APR	3	4	5	6	7	8	9
	10	11	12	13	14	15	16
	17	18	19	20	21	22	23
	24	25	26	27	28	29	30
MAY	1	2	3	4	5	6	7
	8	9	10	11	12	13	14
	15	16	17	18	19	20	21
	22	23	24	25	26	27	28
	29	30	31				
JUN	5	6	7	8	9	10	11
	12	13	14	15	16	17	18
	19	20	21	22	23	24	25
	26	27	28	29	30		

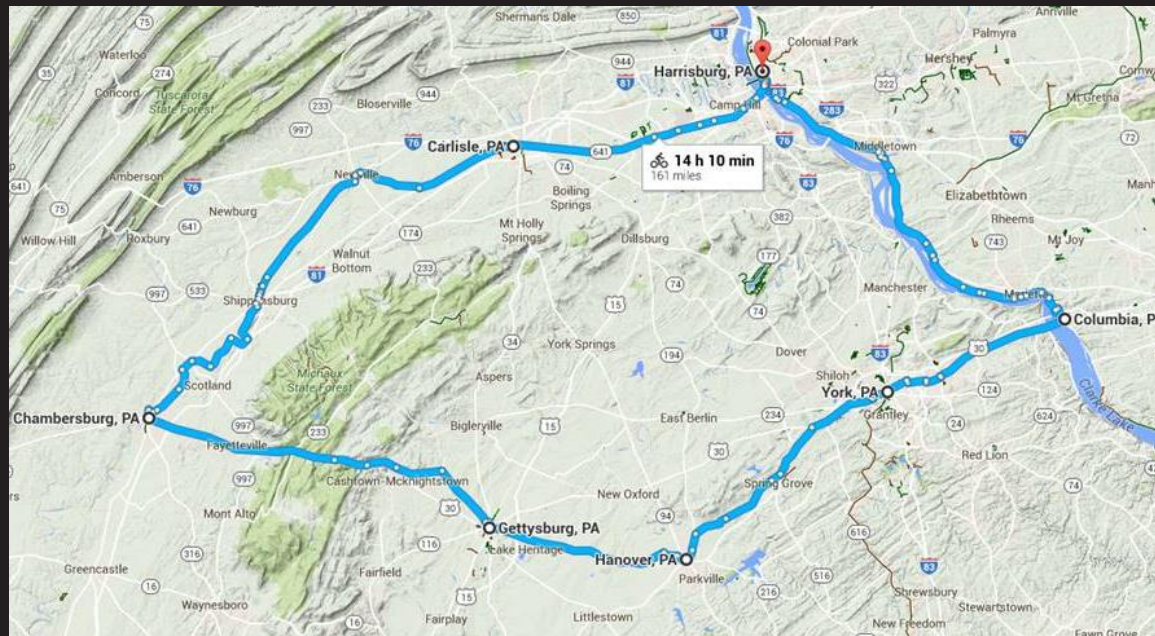
	S	M	T	W	T	F	S
JUL	3	4	5	6	7	8	9
	10	11	12	13	14	15	16
	17	18	19	20	21	22	23
	24	25	26	27	28	29	30
AUG	31	1	2	3	4	5	6
	7	8	9	10	11	12	13
	14	15	16	17	18	19	20
	21	22	23	24	25	26	27
SEP	28	29	30	31	1	2	3
	4	5	6	7	8	9	10
	11	12	13	14	15	16	17
	18	19	20	21	22	23	24
	25	26	27	28	29	30	
OCT	2	3	4	5	6	7	8
	9	10	11	12	13	14	15
	16	17	18	19	20	21	22
	23	24	25	26	27	28	29
NOV	30	31	1	2	3	4	5
	6	7	8	9	10	11	12
	13	14	15	16	17	18	19
	20	21	22	23	24	25	26
	27	28	29	30			
DEC	4	5	6	7	8	9	10
	11	12	13	14	15	16	17
	18	19	20	21	22	23	24
	25	26	27	28	29	30	31



September 26<sup>th</sup>, 2015 - The citizens and first responders of Portland PA prepare to welcome the Inaugural Ride of the Northern Passage of the September 11<sup>th</sup> National Memorial Trail between the Great Allegheny Passage, the Flight 93 National Memorial, the Delaware Water Gap and New York City. Campbell Thomas & Co. led the consulting team that prepared the 500 mile long Alignment Study of the Pennsylvania section, linking at the footbridge across the Delaware River at Portland PA with the Liberty Water Gap Trail.

## CAMPBELL THOMAS & COMPANY ..... 2016

ARCHITECTURE ♦ PRESERVATION ♦ COMMUNITY AND TRANSPORTATION PLANNING ♦ 1504 SOUTH ST ♦ PHILADELPHIA PA 19146 ♦ 215-545-1076 ♦ [www.campbellthomas.com](http://www.campbellthomas.com)



## Trail Rides and Events

### Inaugural Ride:

**Flight 93 National Memorial to Ground Zero  
2017 Tour of the “South Mountain Loop”  
2018 Tour of the Entire Trail**

### Upcoming Rides:

**911 Trail Publicity Ride  
Spring 2019**



# The September 11th National Memorial Trail

***Full Report Dropbox Link:***

[https://www.dropbox.com/sh/e2tah21vubm0nz6/AADe9HPze4lgeB\\_wwynFKMqla?dl=0](https://www.dropbox.com/sh/e2tah21vubm0nz6/AADe9HPze4lgeB_wwynFKMqla?dl=0)

***911 Trail Website:***

[www.911trail.org](http://www.911trail.org)



September 11th National Memorial Trail Alliance

CT  
&C