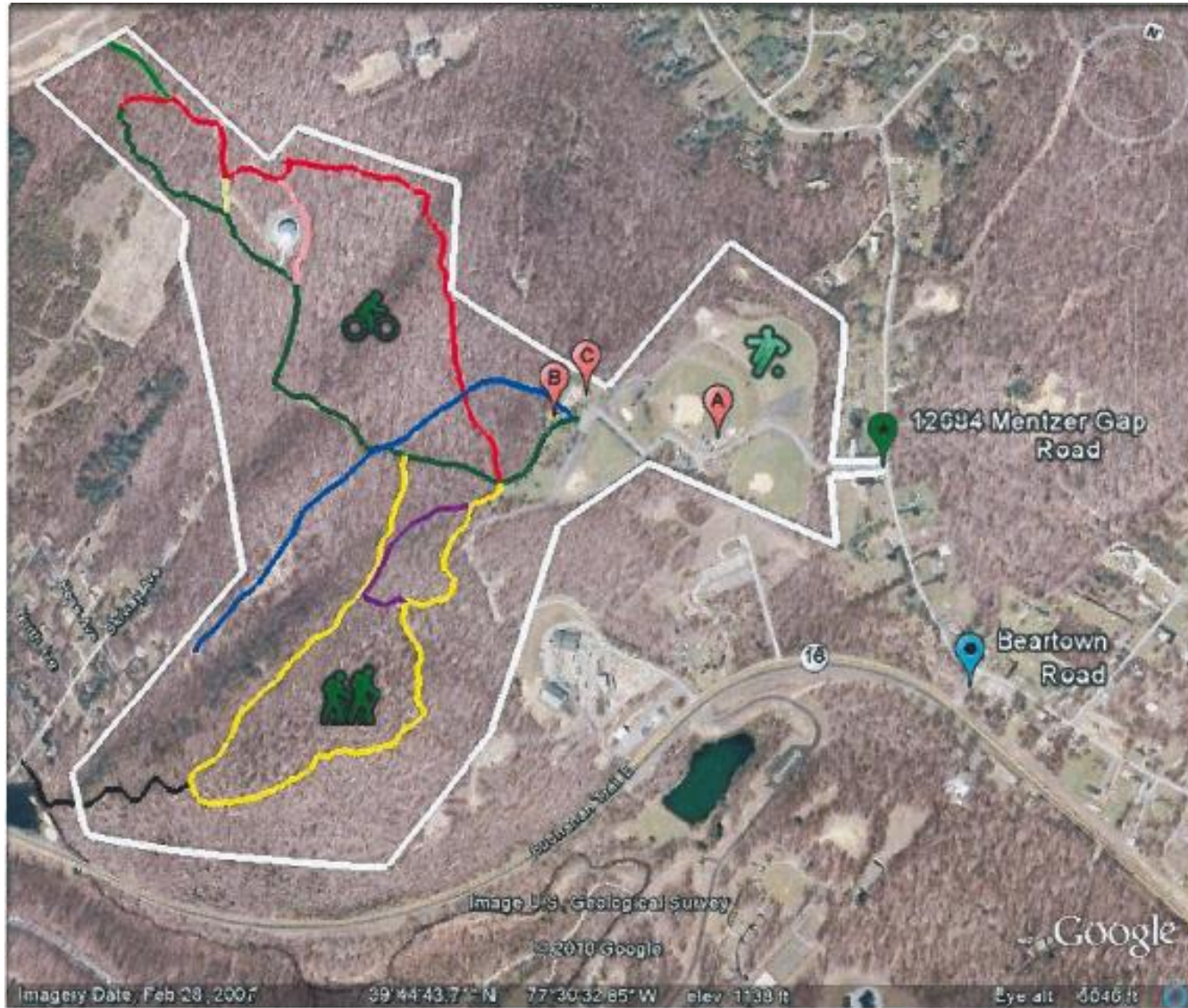


Washington Township Trails



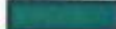


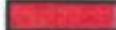


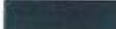


PINE HILL

REGIONAL RECREATION AREA

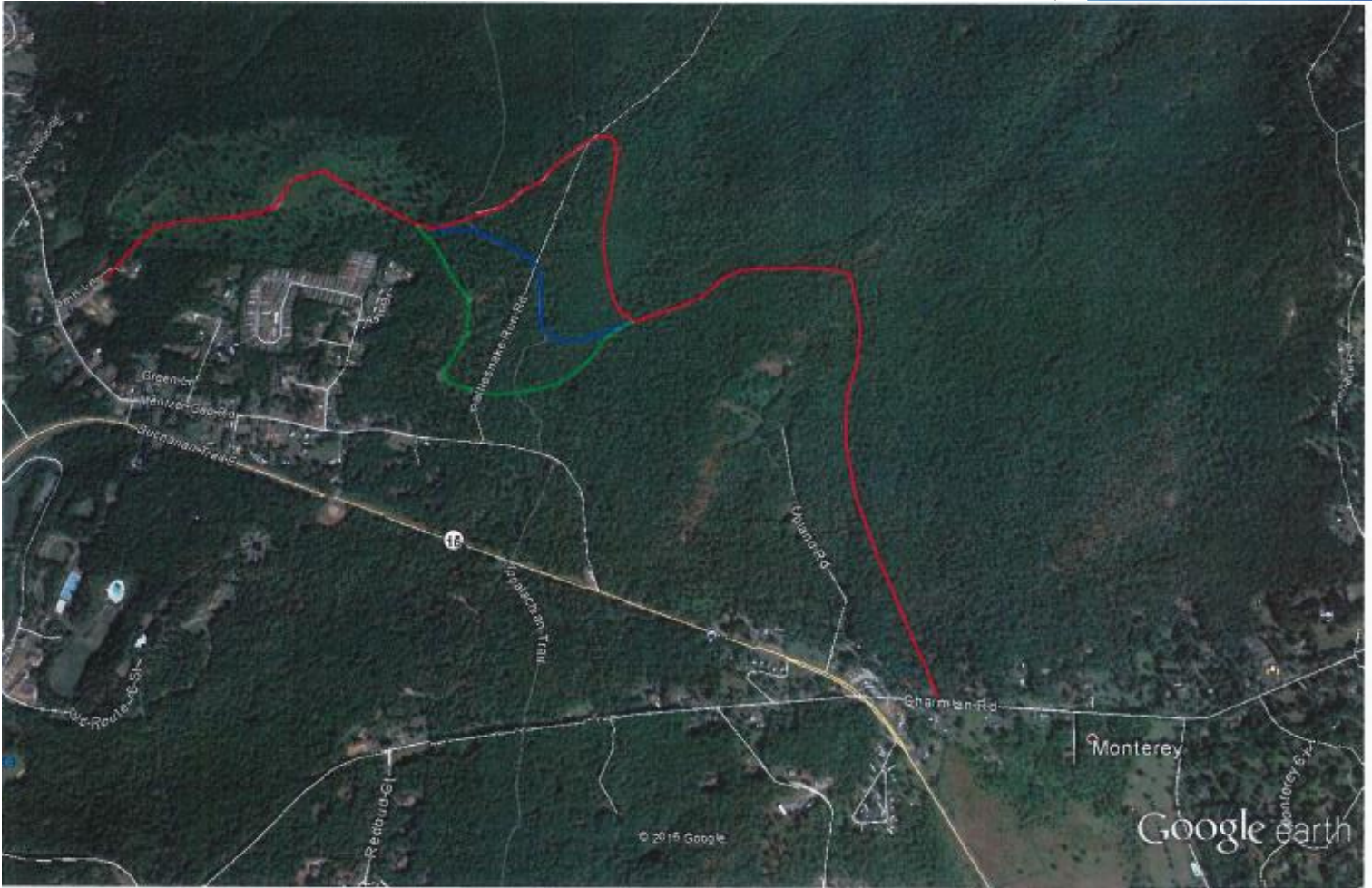
12684 MENTZER GAP ROAD, WAYNESBORO, PENNSYLVANIA

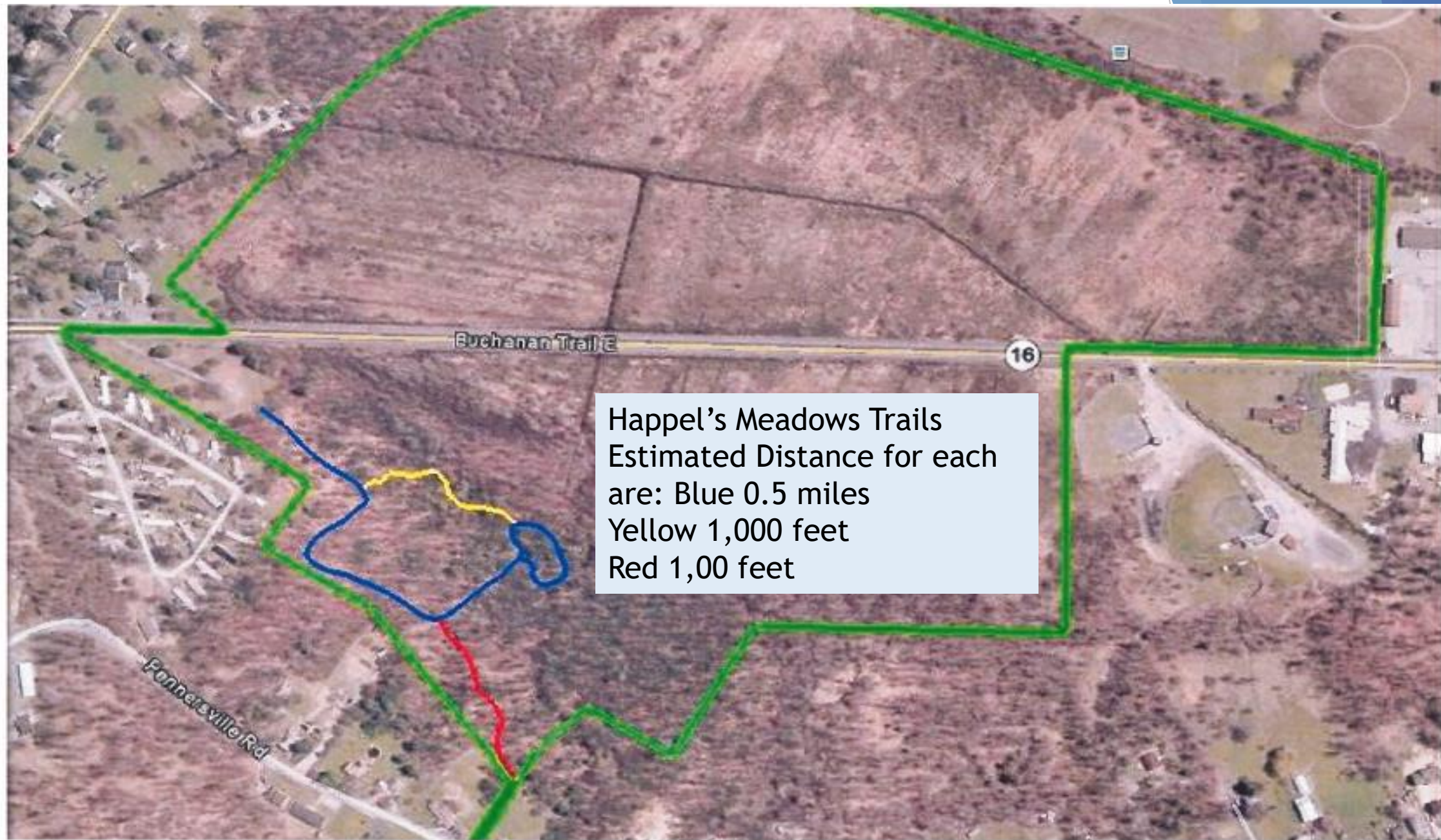
TRAIL MAP

	Fox Crossing Trail	.75 Miles	Moderate
	Paul Benchoff Memorial Overlook Trail	.90 Miles	Easy
	Scout Trail	.15 Miles	Easy
	Deer Trail	.70 Miles	Moderate
	Buzz "Baumgardner" Trail	.33 Miles	Easy
	Hawk Trail	.10 Miles	Easy
	Red Run Trail	750 Feet	Difficult



Proposed trail
from Pine Hill
Park to State
Forest Land -
Estimated 2 Miles





Happel's Meadows Trails
Estimated Distance for each
are: Blue 0.5 miles
Yellow 1,000 feet
Red 1,00 feet



**Proposed from
Renfrew through
Antietam
Meadows to
North Welty
Road and
connecting to
Washington
Township
Boulevard
Estimated 1.2 miles**

**Proposed Trail from
Washington Township Boulevard
to State Forest Land
Estimated 2 miles**





Welcome to

Pine Hill Recreation Area

12684 Mentzer Gap Road - Washington Township

































