

SOUTH MOUNTAIN TRAILS WORKSHOP
November 20, 2018 – Bob Thomas, Keynote Speaker

THE BENEFITS OF TRAILS

**LESSONS LEARNED ABOUT TRAILS
AS WE BUILD FOR THE FUTURE**





TRAILS PROVIDE FOR MANY TYPES OF RECREATION

RECREATION - BELMONT PLATTEAU CROSS-COUNTRY COURSE AND TRAIL





TRAILS PROVIDE FOR INDEPENDENCE



TRAILS PROVIDE EASY ACCESS TO HEALTHY ACTIVITY



TRAILS PROVIDE A REFRESHING VIEW OF OUR WORLD



TRAILS PROVIDE FOR ACCESS TO TRANSIT AND TOWN CENTERS



TRAILS PROVIDE EASY, INSPIRING LINKS IN HILLY COUNTRY



**TRAILS PROVIDE FOR SAFE CROSSINGS OF HIGHWAYS WHILE
LINKING COMMUNITIES**



TRAILS PROVIDE SAFE, INSPIRING CONNECTIONS ACROSS WATER



TRAILS PROVIDE LINKS TO HISTORIC SITES AND EVENTS



TRAILS PROVIDE FOR MANY MODES

HIKERS, BICYCLISTS, WATERCRAFT, EQUESTRIANS, WHEELCHAIRS AND OTHERS



TRAILS LINK DIVERSE COMMUNITIES AND GENERATIONS



TRAILS PROVIDE REVENUE FOR LOCAL BUSINESS
VALLEY GREEN INN AND FORBIDDEN DRIVE – A “TRAIL OF THE YEAR”



TRAILS PROVIDE SUPPORT FOR OUR CULTURAL ASSETS

GO
MT.
AIRY

Imagine the

POSSIBILITIES

CRESHEIM TRAIL MURAL PROJECT

A public art project to recognize the historic railroad trestle—and future Cresheim Trail bridge—over Germantown Avenue as the gateway between the Mt. Airy and Chestnut Hill communities



TRAILS PROVIDE FOR THE ARTS



TRAILS PROVIDE FOR RESTORATION OF DELAPIDATED ASSETS



TRAILS PROVIDE IMPROVEMENTS TO NEWER COMMUNITIES
PENNSYLVANIA HIGHLANDS TRAIL IN A BUCKS COUNTY SUBDIVISION



TRAILS PROVIDE AID TO REVITALIZATION OF OLDER COMMUNITIES
YORK HERITAGE RAIL TRAIL COUNTY PARK



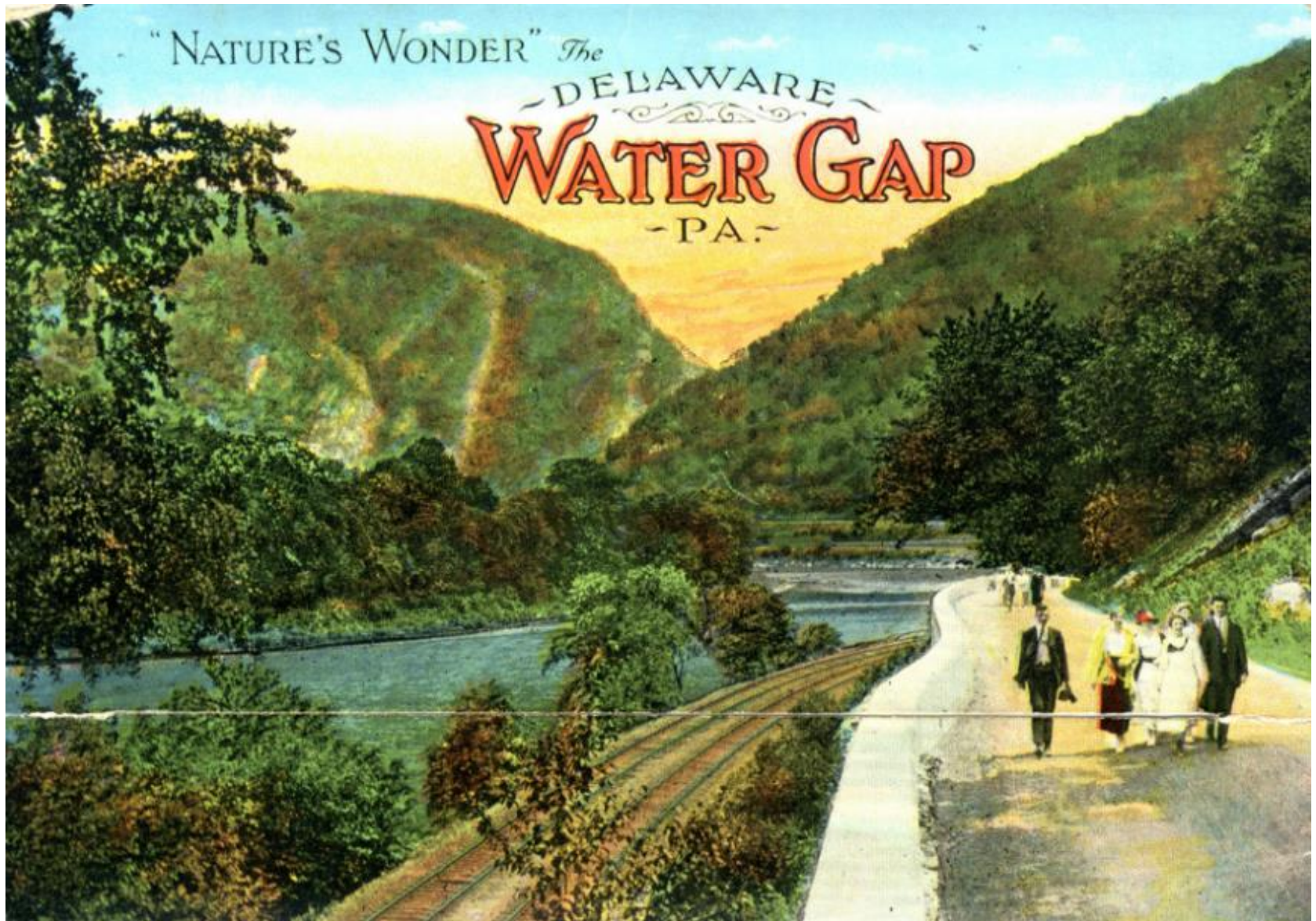
TRAILS PROVIDE INCREASED SECURITY ON UTILITY CORRIDORS



TRAILS PROVIDE INCREASED ACCESS FOR FIRST RESPONDERS



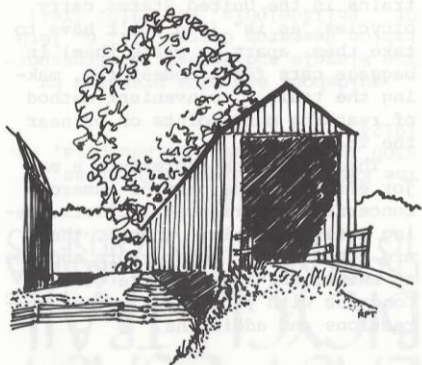
THE PAST -- AND THE FUTURE BENEFITS OF TRAILS
ON THE WAY TO MONROE COUNTY TO WORK FOR THE SUMMER - 1963



**TRAILS PROVIDE THE HUMAN PART OF FUTURE PROJECTS
WHEN ROUTE 611 WAS A "COUNTRY WALKING ROAD"**

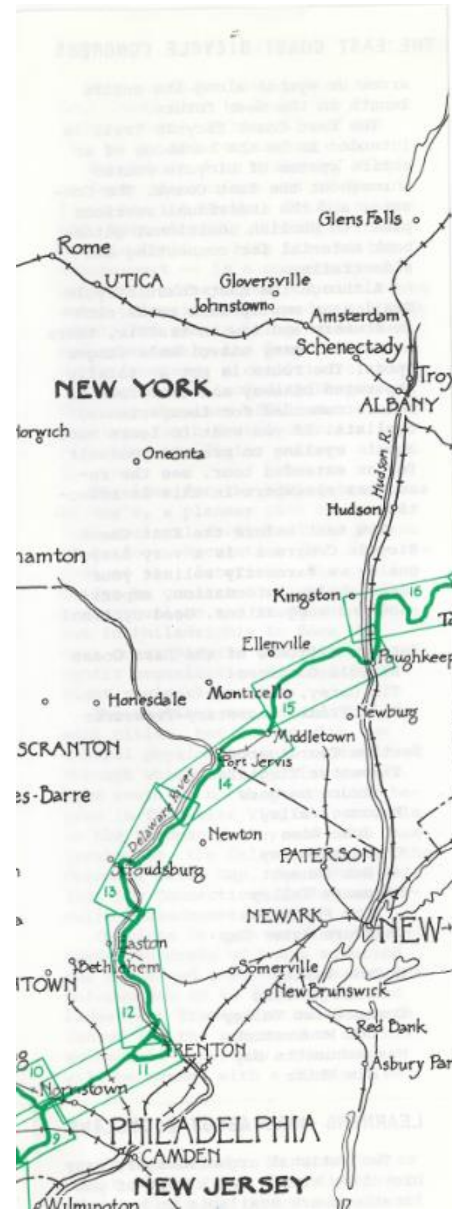
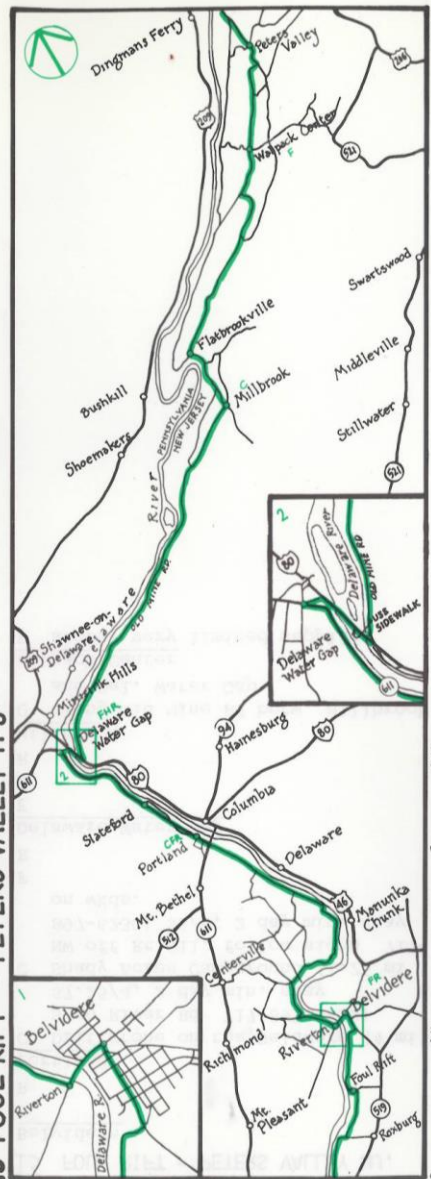
GUIDE TO THE EAST COAST BICYCLE TRAIL

FROM RICHMOND VIRGINIA
TO BOSTON MASSACHUSETTS



FIRST EDITION - JULY 1976
EAST COAST BICYCLE CONGRESS

13 FOUL RIFT - PETERS VALLEY N.J.



13 FOUL RIFT - PETERS VALLEY NJ.

Belvidere

F
R

Portland

C Driftstone on the Delaware (4 mi S on River Rd 717-897-6859)

\$7.25/4, 2 day min. stay

C Shady Acres Campground (1.25 mi NW off Rt 611, follow signs 717-897-6230) \$5/4, 2 day min. stay on wkds.

F
R

Delaware Water Gap

F
H
R

Millbrook

C along Old Mine Rd betw. Millbrook and Del. Water Gap

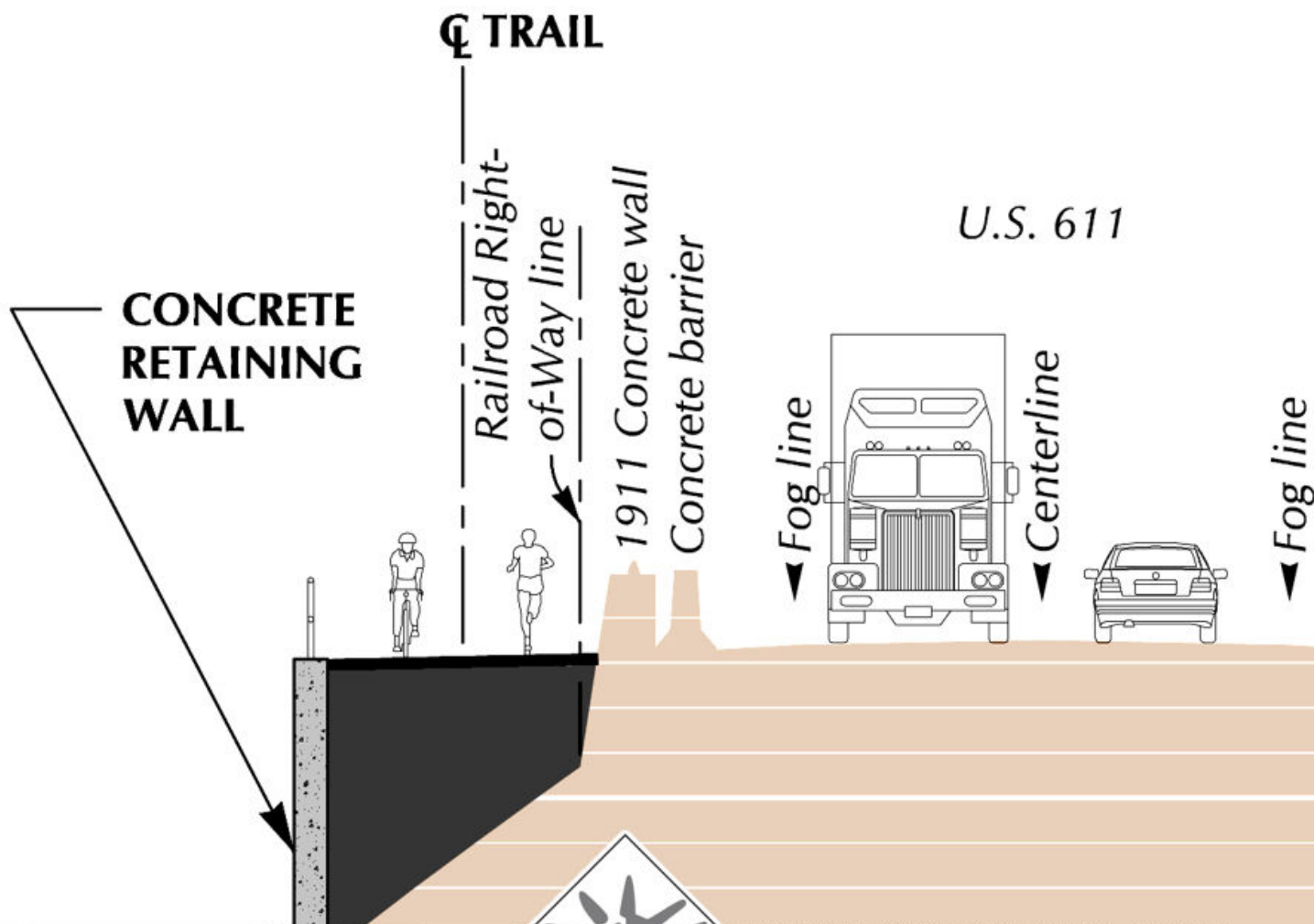
Walpack Center

F store- very limited supplies

GUIDE TO THE EAST COAST BICYCLE TRAIL - THRU DELAWARE WATER GAP - 1976



ROUTE 611 IN THE DELAWARE WATER GAP NATIONAL RECREATION AREA TODAY



NO.	DATE	DATE
		March
		PROJECT



Company 1504 South Street, Philadelphia, PA 19146 telephone: 215-545-1076
200 West State Street, Trenton, New Jersey 08608 telephone: 609-695-2777

Section

S.1

LIBERTY WATER GAP TRAIL

**FEASIBILITY STUDY FOR
EXTENSION TO DELAWARE WATER GAP**



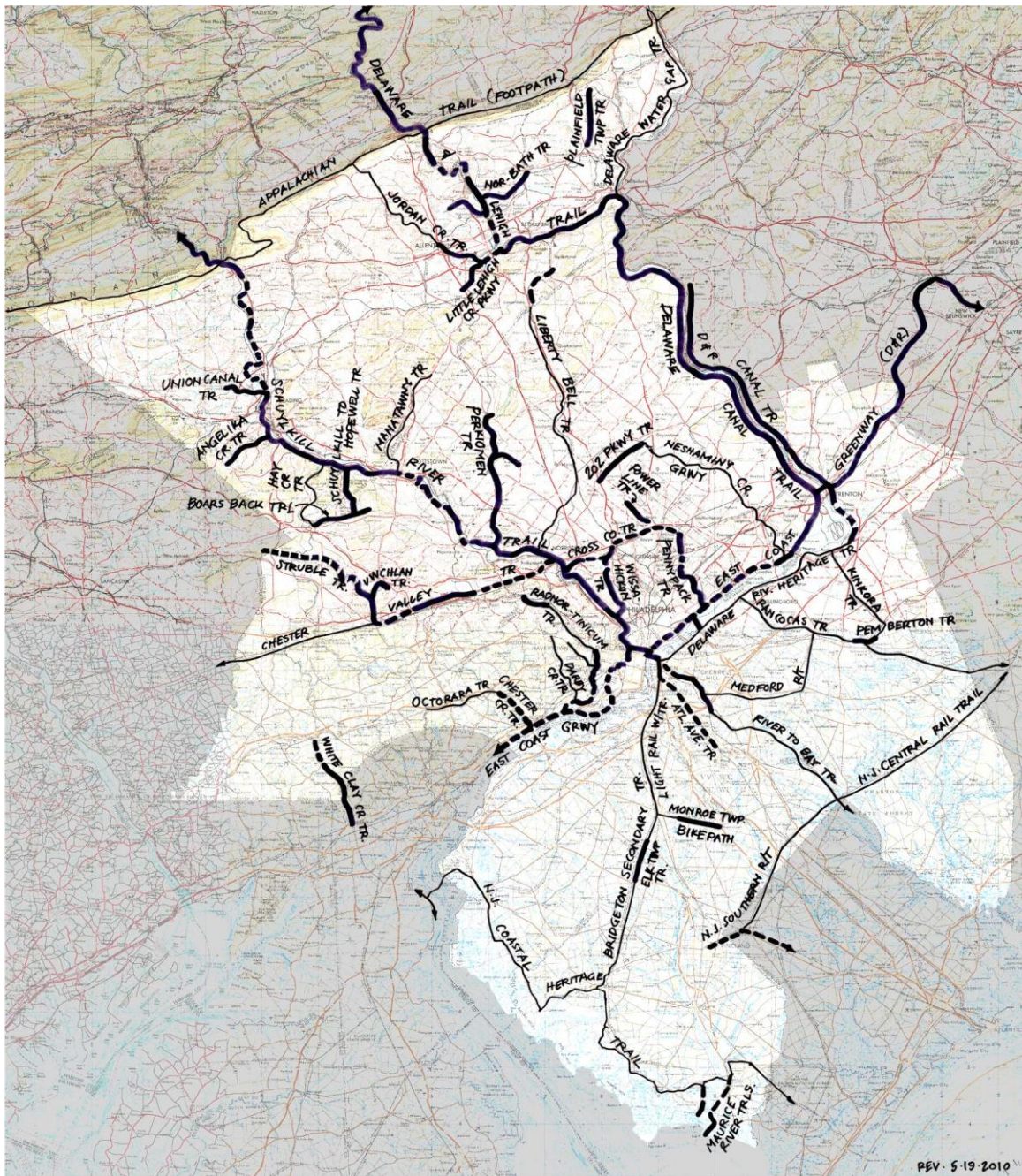
LIBERTY WATER GAP TRAIL

**FEASIBILITY STUDY FOR
EXTENSION TO DELAWARE WATER GAP**



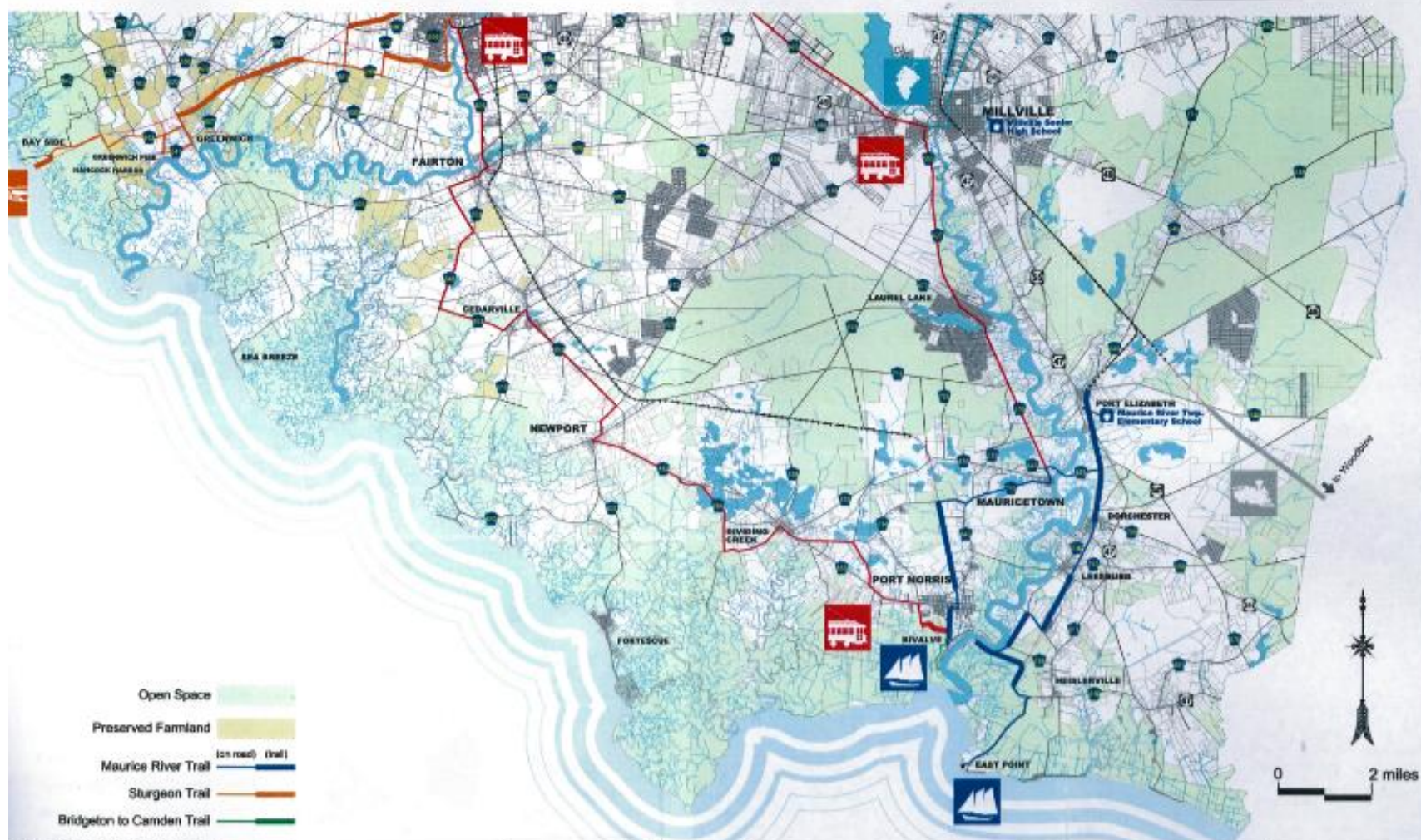
LIBERTY WATER GAP TRAIL

**FEASIBILITY STUDY FOR
EXTENSION TO DELAWARE WATER GAP**



**MAJOR TRAILS
DELAWARE RIVER
WATERSHED
FROM
DELAWARE
WATER GAP
TO
DELAWARE BAY**

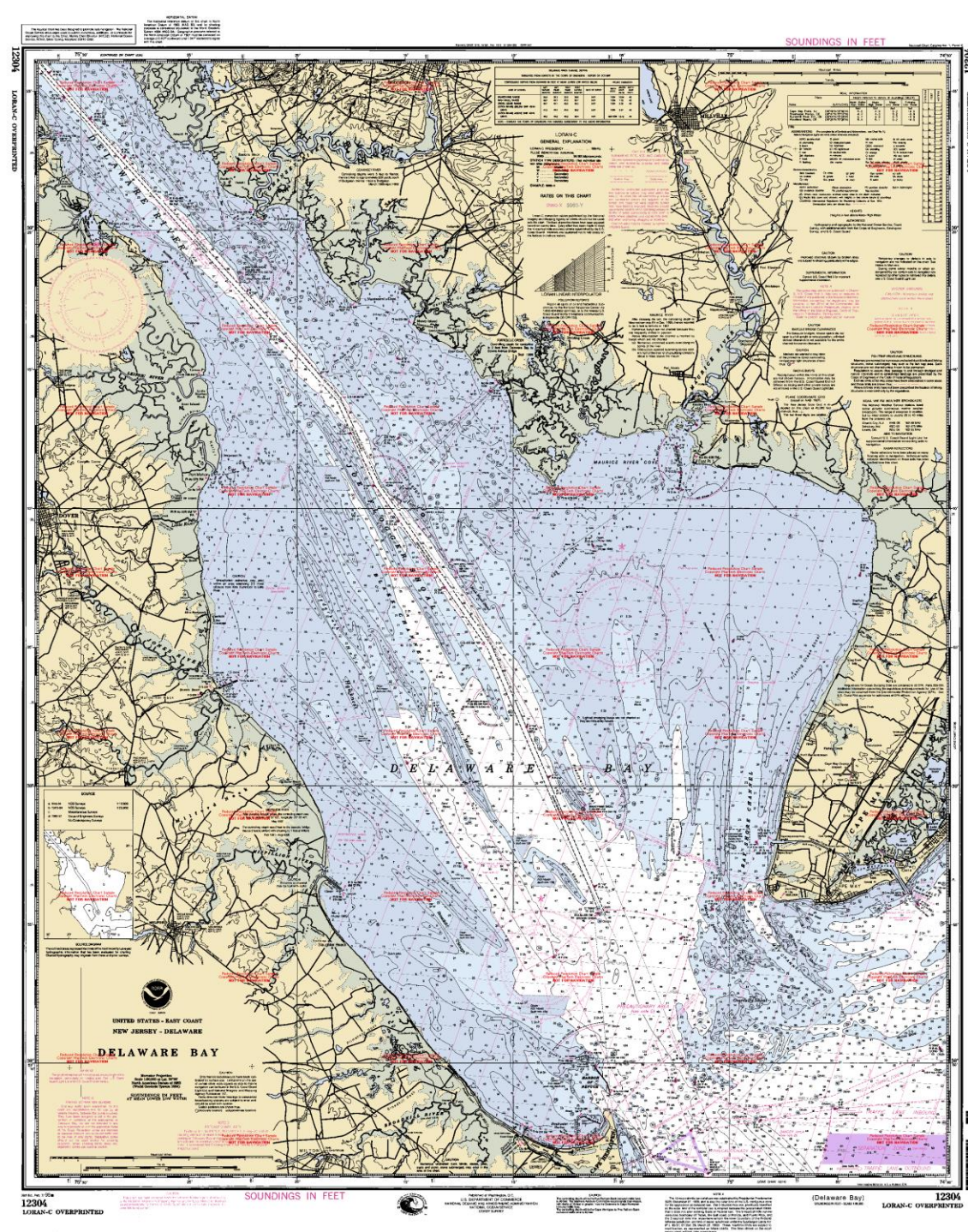
THE CREATION OF REGIONAL NETWORKS OF TRAILS



ALL RIGHTS RESERVED
© 2010 CAMPBELL THOMAS & CO.

FILE: n:\cun-rail\design\cumberland county map.dwg	DRAWN BY	ZMS
PLT SCALE: as noted	CHECKED BY	RPT
REVISIONS	DATE	June 30, 2010
NO. DATE	PROJECT NO.	CUN-RAIL

Cumberland County New Jersey		TITLE Recommended Trails - South
Rails to Trails Feasibility Study		
CT &C	Campbell Thomas & Company Architecture • Preservation • Community & Transportation Planning 1506 South Street, Philadelphia, Pa. 19146 telephone: 215-545-1076 fax: 215-545-8397	DWG NO. B2



**SCHOONER A. J. MEERWALD
BIVALVE, NEW JERSEY**

