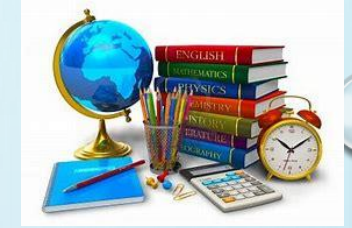


MUNICIPAL SEPARATE STORM SEWER SYSTEM (MS4)

REBECCA DAVIS, MS4 COORDINATOR – LOWER ALLEN TOWNSHIP

KELLY KURTAS, MS4 COORDINATOR - SOUTH MIDDLETON TOWNSHIP



OUR BACKGROUND

REBECCA DAVIS

- 1996 Graduate of Cumberland Valley High School
- 2000 Graduate of Juniata College – B.S. in Environmental Science
- Began career working for Engineering Consulting Firms:
Performed Wetland Delineations, Reviewed Subdivision Plans, Zoning Ordinance Revision, Comprehensive Plans
- Moved to Municipal Government in 2004
Zoning & Building permit review, Planning, Stormwater Management, MS4
- Currently - MS4 Coordinator for Lower Allen Township, Cumberland County, PA
- Certified Chesapeake Bay Landscape Professional
- Certified Stormwater Inspector



KELLY KURTAS

- 1996 Graduate of Archbishop Ryan High School
- 2000 Graduate of Shippensburg University– B.S. in Geography
- 2005 Shippensburg University – M.S. in Environmental Studies (Hydrology and GIS)
- 12 Years of experience working in private consulting focusing in floodplain management
- MS4 at Silver Spring Township
- Currently - MS4 Coordinator for South Middleton Township, Cumberland County, PA
- Certified Stormwater Inspector

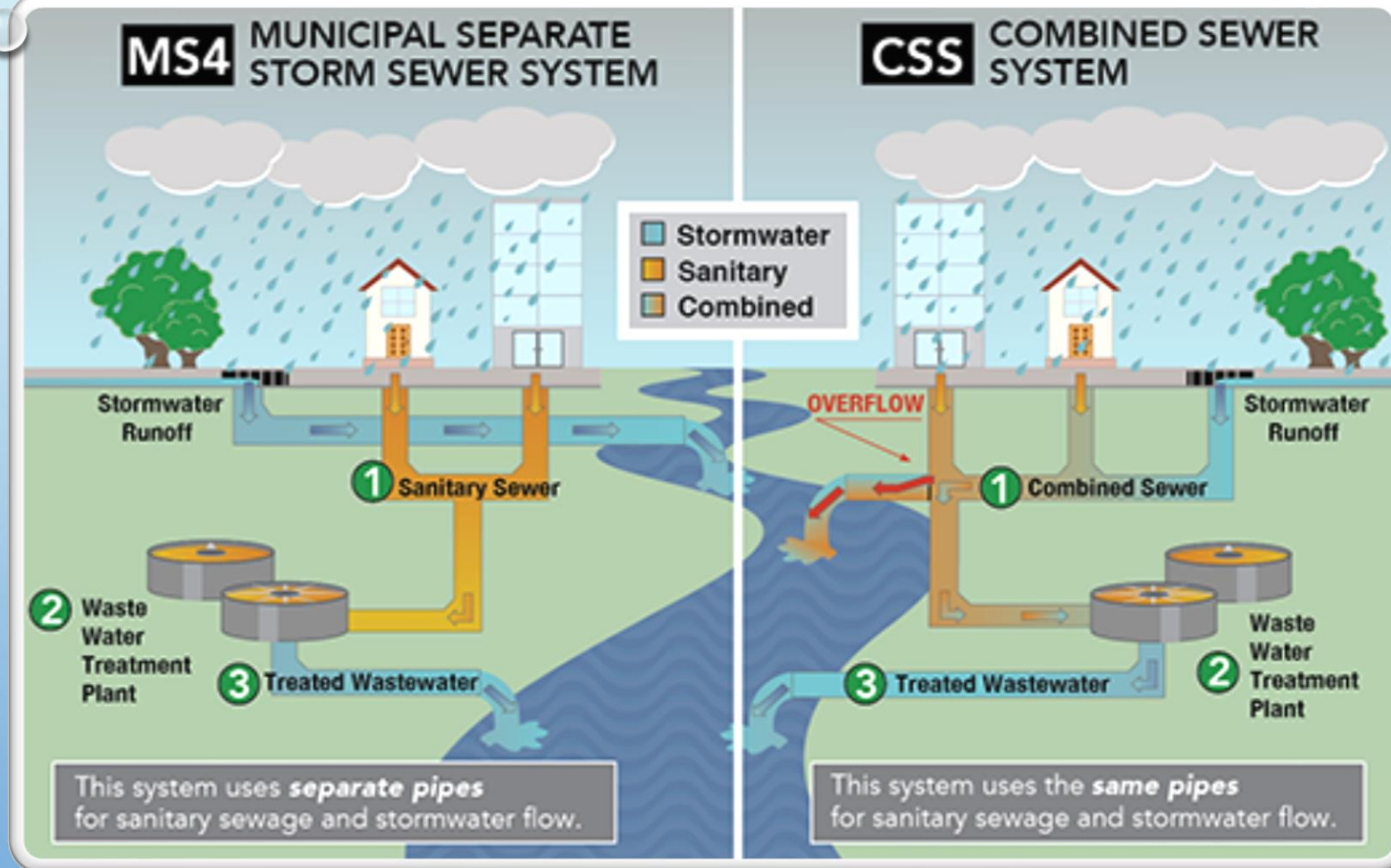


GOALS OF DISCUSSION TODAY

- LEARN THE MEANING OF “**MS4**” AND THE REGULATIONS ASSOCIATED WITH DEVELOPING AND IMPLEMENTATION OF A **MS4** PROGRAM.
- LEARN HOW MUNICIPALITIES, WATERSHED ASSOCIATIONS, COUNTIES, AND THE PRIVATE SECTOR CAN WORK TOGETHER TO MEET THE REQUIREMENTS OF THE MS4 PROGRAM.



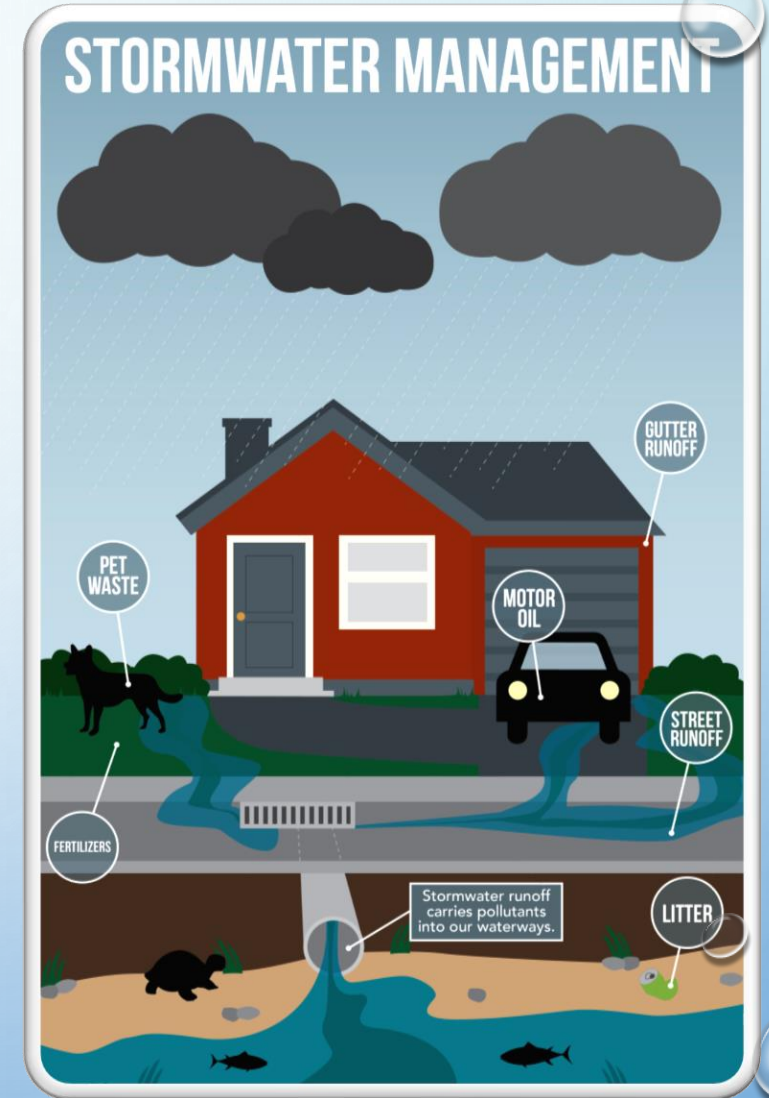
MS4



- MUNICIPAL
- SEPARATE
- STORM
- SEWER
- SYSTEM

WHAT IS AN MS4?

- AN MS4 IS A CONVEYANCE OR SYSTEM OF CONVEYANCES THAT IS:
 - OWNED BY A STATE, CITY, TOWN, VILLAGE, OR OTHER PUBLIC ENTITY THAT DISCHARGES TO THE WATERS OF THE COMMONWEALTH.
 - DESIGNED OR USED TO COLLECT OR CONVEY STORMWATER (ROADS, DRAINAGE SYSTEMS, CURBS, GUTTERS, PIPES, DITCHES.)





MS4 PERMIT PROGRAM FOR SMALL COMMUNITIES – PHASE II NPDES

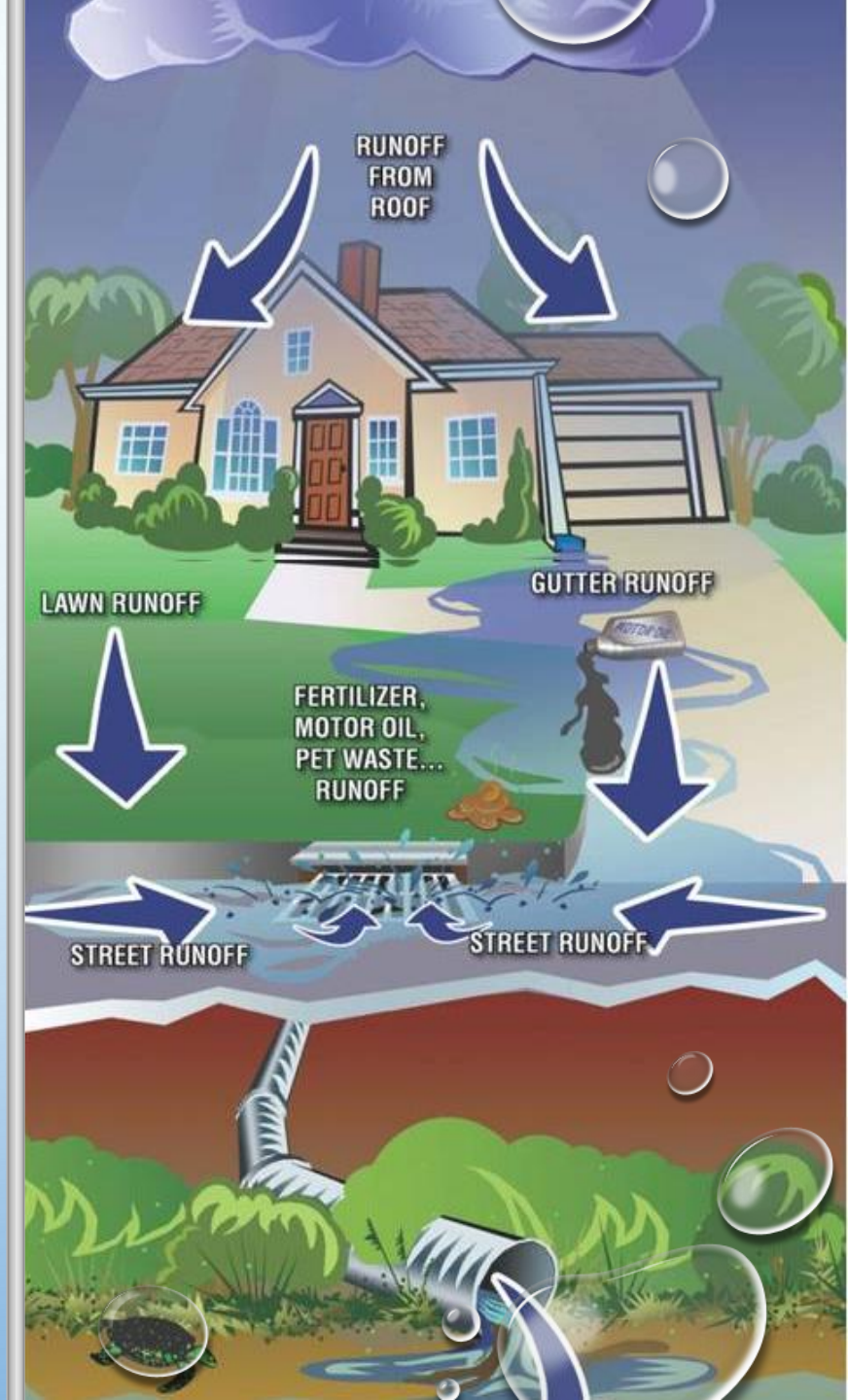
- FEDERAL REGULATION REQUIRES PERMIT FOR MUNICIPALITIES THAT ARE CLASSIFIED BY THE USEPA AS URBANIZED AREAS (BASED OFF THE US CENSUS).

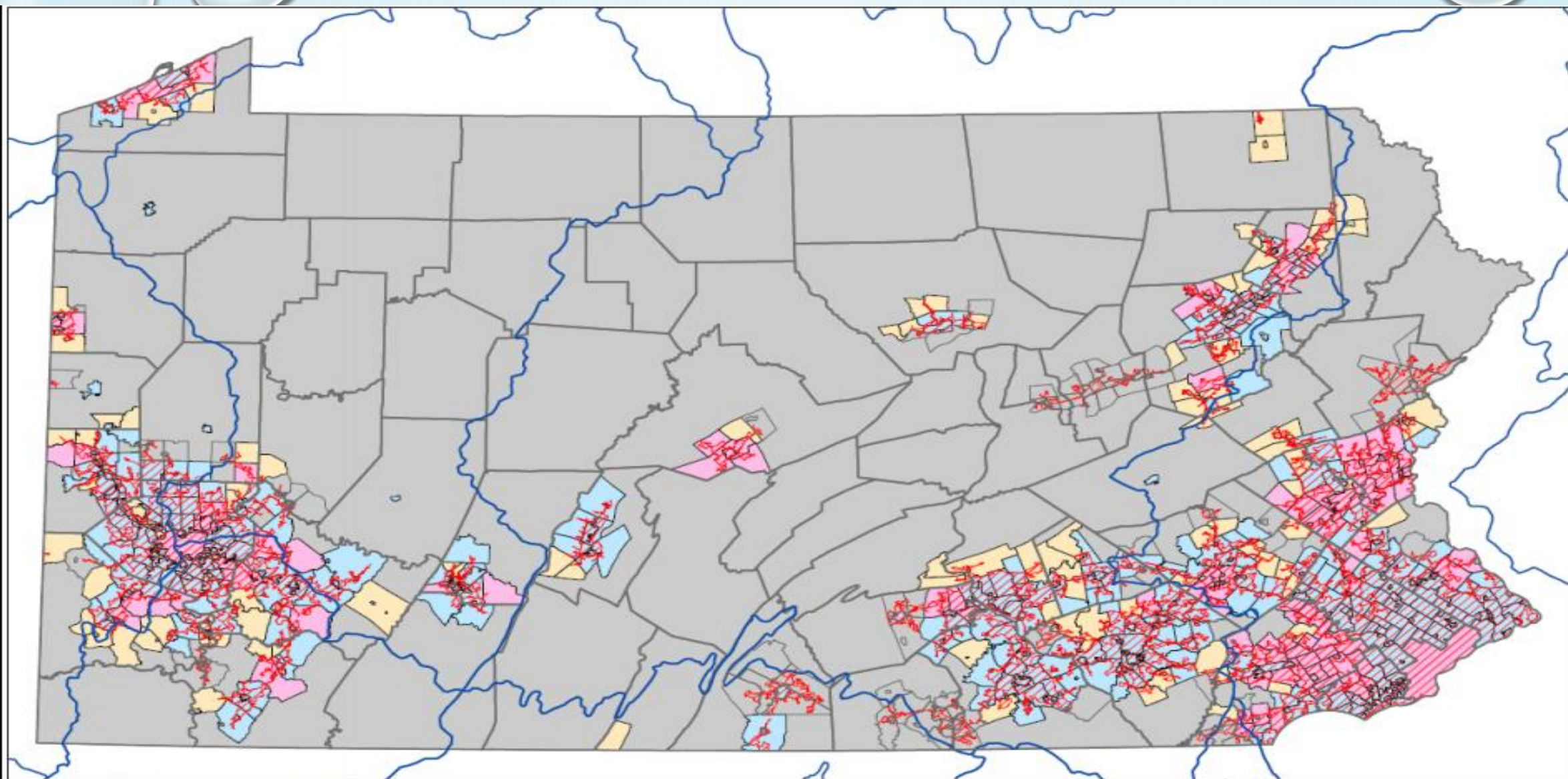
➤ NATIONAL POLLUTANT DISCHARGE ELIMINATION SYSTEM (NPDES) PAG -13.

PADEP CREATED THE STATE PERMITTING PROGRAM TO MEET THIS REQUIRED FEDERAL REGULATION.

MS4 PERMIT PROGRAM

- POLLUTED STORMWATER RUNOFF IS TRANSPORTED BY MS4S AND DISCHARGED (UNTREATED) INTO LOCAL WATERBODIES.
- GOALS OF THE MS4 PERMIT PROGRAM:
 - REDUCE NITROGEN, PHOSPHORUS, AND SEDIMENTS IN STORMWATER RUNOFF
 - SLOW DOWN RUNOFF VELOCITY AND INFILTRATE STORMWATER RUNOFF – GROUNDWATER RECHARGE
 - THERE ARE CLOSE TO 1,000 MS4S IN PENNSYLVANIA

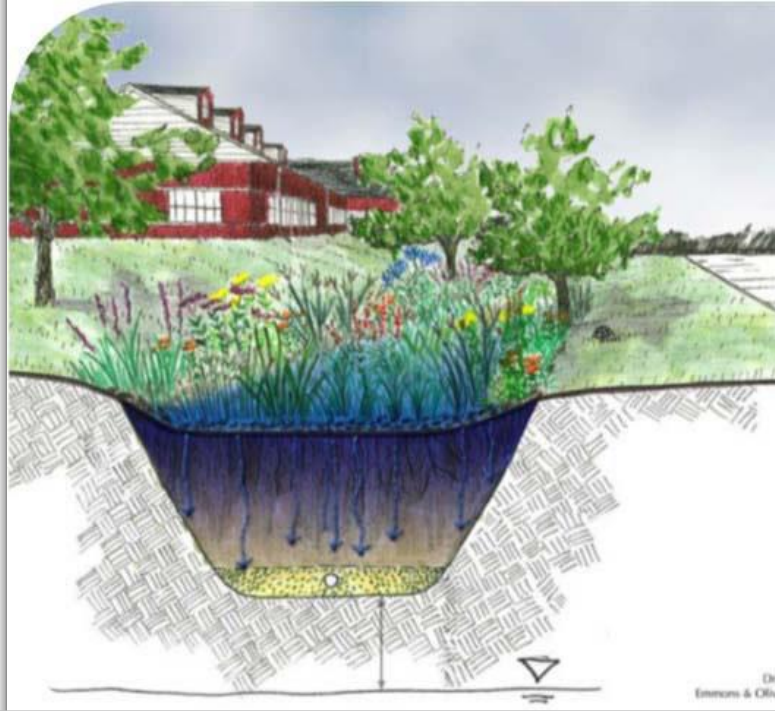




MS4 Municipalities / 2010 Urbanized Areas

- Permit Status as of May 2012
- General
 - Individual
 - Waiver
- Legend:
- Municipalities
 - County Boundaries
 - Major Watershed Boundary
 - 2010 Urbanized Area

0 15 30 60 90 120 Miles



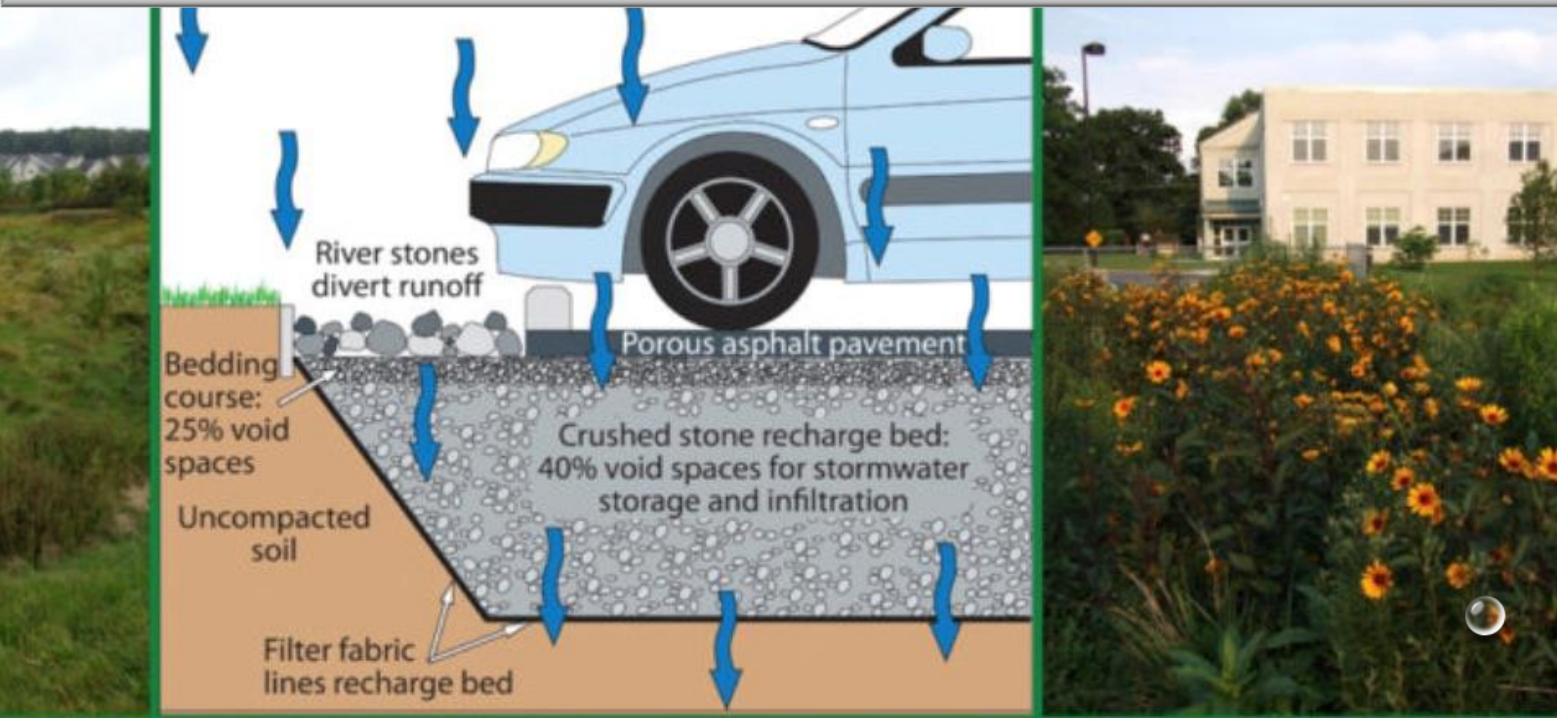
BEST MANAGEMENT PRACTICES

STRUCTURAL

- GREEN ROOFS
- PERMEABLE PAVEMENT
- RAIN GARDENS
- BIORETENTION FACILITIES

NONSTRUCTURAL

- MULCH YOUR LAWN
- KEEP GRASS CLIPPINGS OUT OF THE STREET
- PICK UP AFTER YOUR PET
- RECYCLE
- DISPOSE OF HAZARDOUS MATERIALS PROPERLY



HOW DOES THE MS4 PERMIT WORK?



MUNICIPALITIES ACQUIRE A NPDES PERMIT THAT COVERS A 5-YEAR PERIOD.

THE PERMIT REQUIRES THE MUNICIPALITY TO MEASURE ITS EFFORTS TO REDUCE POLLUTANTS IN 6 DIFFERENT AREAS – MINIMUM CONTROL MEASURES (MCMS)

ANNUALLY, THE MUNICIPALITY MUST REPORT TO PADEP ON HOW THEY HAVE IMPROVED, CHANGED, AND MANAGED THESE AREAS IN ORDER TO MAINTAIN COMPLIANCE WITH THEIR PERMIT.

MINIMUM CONTROL MEASURES MUST BE RE-EVALUATED ANNUALLY TO DETERMINE COMPLIANCE.



MS4 PERMIT REQUIREMENTS

- 6 MINIMUM CONTROL MEASURES
- CHESAPEAKE BAY POLLUTION REDUCTION PLAN (PRP)
- POLLUTION CONTROL MEASURES (PCMS)
- ANNUAL REPORTS
- DEP INSPECTIONS
- DOCUMENTATION!!

MS4 WORKGROUP SOUTH CENTRAL PA

- INITIAL START UP – SPRING 2019
- FIRST MEETING – JULY 17, 2019- LOWER ALLEN TOWNSHIP MUNICIPAL BUILDING
- BEGAN DUE TO A NEED FOR COLLABORATION AMONG MS4 COORDINATORS AND STORMWATER PROGRAM MANAGERS TO FULFILL THE REQUIREMENTS OF THE MS4 PERMIT PROGRAM
- 31 CURRENT MEMBERS INCLUDE MS4 COORDINATORS FROM MUNICIPALITIES, COUNTY PLANNERS, CONSERVATION DISTRICTS, PRIVATE SECTOR , AND NON-MS4 MUNICIPALITIES
- CONDUCT QUARTERLY MEETINGS
- GUEST SPEAKERS ATTEND MEETINGS TO DISCUSS MS4 TOPICS
- OPEN MEMBERSHIP

BENEFITS OF WORKGROUP PARTICIPATION

- NETWORKING
- PUBLIC OUTREACH
- TRAINING/EDUCATION
- FULFILLMENT OF MINIMUM CONTROL MEASURES FOR MS4 PERMIT COMPLIANCE
- GRANT OPPORTUNITIES
- INFORMATION SHARING PLATFORM
- ENHANCED WORKING RELATIONSHIP ACROSS MUNICIPALITIES/COUNTIES/PRIVATE SECTOR

MS4 WORKGROUP UPCOMING MEETINGS

2020 MS4 Workgroup Meetings

Date	Location	Speaker
1/28/2020	Lower Allen Township	Holly Smith & Andy Yench
4/28/2020	South Middleton Township	Beth Ginter - Chesapeake Bay Landscape Certification Program
7/28/2020	South Londonderry Township	Aaron Brouse - ESRI
10/27/2020	Hampden Township	Conservation District Speakers – Cumberland, Dauphin, York

QUESTIONS/COMMENTS?

REBECCA DAVIS

LOWER ALLEN TOWNSHIP MS4
COORDINATOR

RDAVIS@LATWP.ORG

717-975-7575 EXT 1010

WWW.LATWP.ORG

KELLY KURTAS

SOUTH MIDDLETON TOWNSHIP MS4
COORDINATOR

KKURTAS@SMIDDLETON.COM

717-258-5324

WWW.SMIDDLETON.COM