



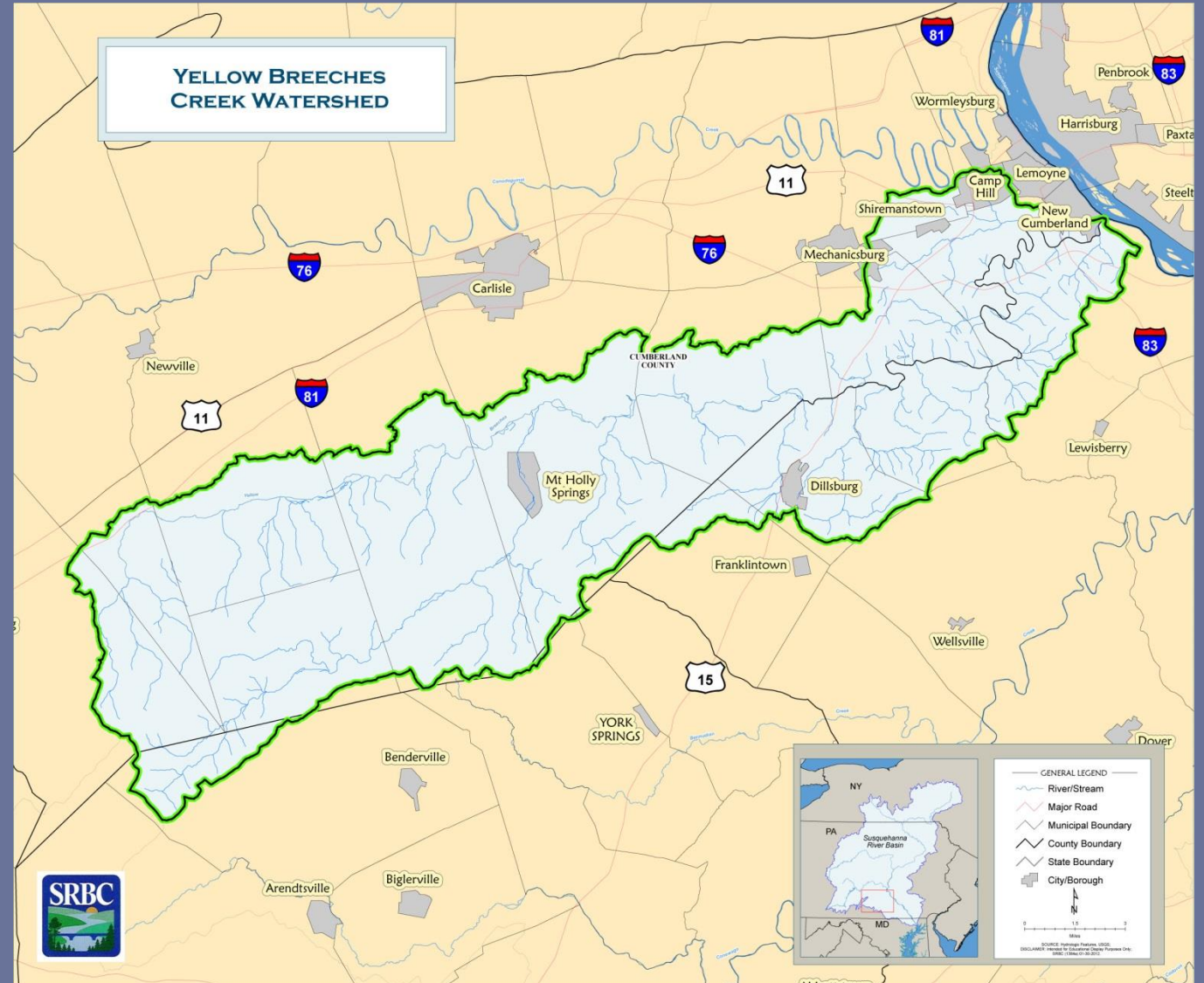
Yellow Breeches Watershed Association *Working with Municipalities for Greater Impact*



Yellow Breeches Afternoon by McKinney

Yellow Breeches Watershed

- 219 square miles
- 21 municipalities
- 56 miles long
- 368 total stream miles



List of Pennsylvania Scenic Rivers

- Bear Run
- French Creek
- Lehigh River
- LeTort Spring Run
- Lick Run
- Lower Brandywine Creek
- Octoraro Creek
- Pine Creek
- Schuylkill River
- Stony Creek
- Tucquan Creek
- Tulpehocken Creek
- Yellow Breeches Creek



Yellow Breeches Creek, PA

A Keystone State Classic

By John Hoffman

Share 3



PHOTO BY JOHN HOFFMAN

"The Breeches," as it is affectionately known by locals, holds a special place in my heart and mind—most notably because it was the first Pennsylvania limestone stream I fished. And through the years, my affinity for the creek has grown stronger with every

Products

[Editorial Index](#)

[Back Issues \(Print\)](#)

[Books](#)

[Digital Back Issues \(PDF\)](#)

[Other Products](#)

[Slipcases](#)

Features

[Second College Grant, NH](#)

[Davidson River, NC](#)

[Etowah River, GA](#)

[Dukes Creek, GA](#)

[Casco Bay, ME](#)

[Paradise Waits](#)

[Yellow Breeches Creek, PA](#)

[Gunflint Trail, MN](#)

[Watauga River, TN](#)

[Mosquito Lagoon, FL](#)

[Savannah, GA](#)

[Broad River, GA](#)

[Rush River, WI](#)

[Conodoguinet Creek, PA](#)

[Bonaventure River, Quebec](#)



A Source of Drinking Water



Crucible for Conservation

SUMMER IN THE SOUTH MOUNTAIN
The Craighead Family Legacy

Thursday, October 8th, 2015
7 pm



Cumberland County
HISTORICAL
SOCIETY

Full of History

In the book *Callapatscink* by John R. Miller (circa 1909) there are identifications of 60 mills that existed at various times along the Yellow Breeches



Grist 13

Saw 10

Forge 3

Oil 4

Fulling 3

Clover 3

Furnace 1

Plaster 1

Chopping 1

Iron Works 1

Unknown 20 (Probably Grist
& Saw)

Forge 3

Important for Wildlife



outdoors

[Biking, Hiking & Trails](#) ▶[Campgrounds & RV Parks](#)[Golf](#) ▶[Guided Tours](#)[Hunting & ATVs](#)[Nature Explorer](#)[Parks & Wildlife Area](#) ▼[Bird Watching](#)[Appalachian Trail](#)[Colonel Denning State
Park](#)[Kings Gap](#)[Pine Grove Furnace State
Park](#)[Susquehanna River](#)[Conodoguinet Creek
Water Trail](#)[Yellow Breeches Creek
Water Trail](#)

Yellow Breeches Creek Water Trail



The world-renowned limestone stream, **Yellow Breeches Creek**, originates on South Mountain, in **Michaux State Forest**, Cumberland Valley, near Walnut Bottom. From there, the Yellow Breeches meanders through the Valley's farmland, forested areas and suburbs, and joins the Susquehanna River near New Cumberland. The main stem of the Yellow Breeches is some 49-miles long & 60-feet wide at its middle stretch.

What is MS4?

The stormwater requirements of the federal Clean Water Act are administered under the PA DEP's **Municipal Separate Storm Sewer (MS4) Program**. In December 2002, DEP issued a General Permit ("PAG-13") for use by MS4s that fall under the National Pollutant Discharge Elimination System (NPDES) Phase II program, **requiring the implementation of a stormwater management program for minimizing the impacts from runoff.**

Under the MS4 Program, permittees are required to incorporate the following six elements (known as minimum control measures, or MCMs) into their stormwater management programs:

- Public education and outreach
- Public involvement and participation
- Illicit discharge detection and elimination
- Construction site runoff control
- Post-construction stormwater management in new development and redevelopment
- Pollution prevention and good housekeeping for municipal operations and maintenance

Trout Day



Family Creek Cleanup



Family Creek Cleanup



Family Creek Cleanup



Family Creek Cleanup



Family Creek Cleanup



Exhibits and Outreach



Exhibits and Outreach



Annual Gathering/Educational Programs



YBWA Creek-Friendly Landscaping Competition



CREEK FRIENDLY LANDSCAPE MAKEOVER CHALLENGE

For residents of the Yellow Breeches Creek Watershed

Three winners will each receive a

\$500

gift certificate toward plants and materials for their project

Make your yard a space that:

- Conserves water
- Reduces stormwater runoff
- Includes native plants
- Decreases turf grass area/increases planted area
- Encourages and benefits wildlife
- 'Buffers' streams and water features with trees, shrubs, and meadows (if applicable)
- Minimizes use of synthetic fertilizers, pesticides, and herbicides

REGISTRATION DEADLINE: SEPTEMBER 12

[See back for details!](#)

Brought to you by:



Recreational Management



Other Relevant Activities...Present or Past

- Letters of Support for municipal grant applications regarding MS4 projects.
- Maintaining informational kiosks
- Reporting Problems and Illicit Discharges
- Youth Sojourn
- Riparian buffer plantings
- Water quality monitoring
- AND MORE!

Lower Allen Township



New Park with a Streamside Buffer



Stabilization/Restoration



www.ybwatershed.org

