

slido



About how many acres is the Michaux State Forest?

ⓘ Start presenting to display the poll results on this slide.



State of the Region

Report Card/Landscape Observations & Patterns

Update for Winter Partners Meeting
Friday, January 20, 2023



Goals:

- Realize South Mountain Partnership Vision
- Communicate key regional observations, trends and challenges
- Engage a variety of stakeholders and grow Partnership constituency
- Develop recommendations and tools
- Facilitate collective & collaborative actions to impact identified challenges

.....How are we doing as a region?



A landscape of conserved resources and vibrant communities sharing a common sense of place and collaborating on well-planned growth and sustainable economic development.

Deliverables

- State of the Region Report Card (printed)
- Recommendations
- Story Map
- Interactive Maps
- Content for digital/traditional communications/outreach



Report Card Example

5 YEAR REPORT CARD


STATE OF THE ENVIRONMENT
• BERKS COUNTY, PA •

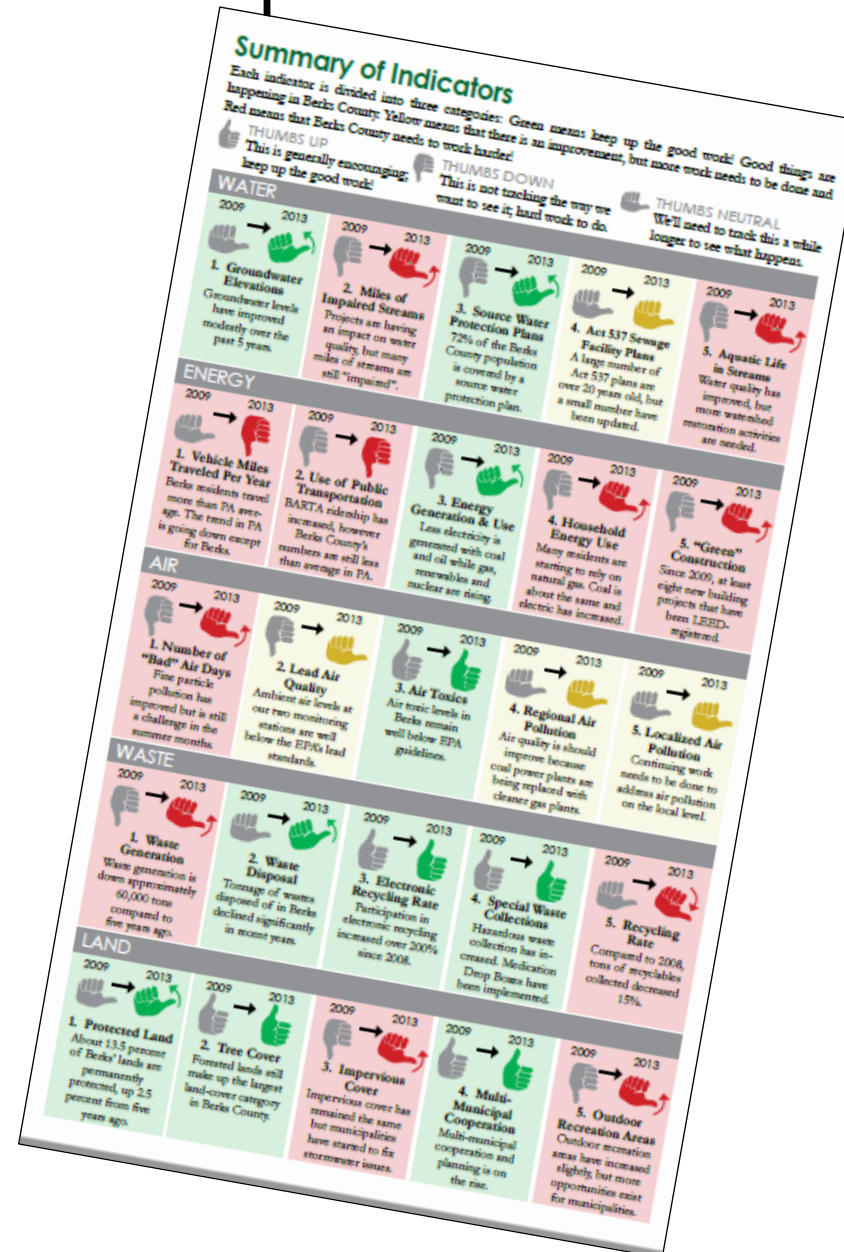
REPORT CARD
Report Year: 2013

Name: Our Environment

Address: Berks County, Pennsylvania

To the Citizens of Berks County:
This report card is to inform you of the health of Berks County in relationship to Air, Energy, Land, Waste and Water. It is designed to educate and inspire you to help make a difference. After reviewing the report card, register online at www.berks-conservancy.org to stay involved.


Brought to you by the Berks Conservancy
Your local non-profit conservation organization.



Timeline

- Metrics Development = nearly complete
- Report Card = May
- ID Regional Challenges = May-Sept
- Recommendations = Sept.
- Story Map = Sept.
- Interactive Maps = May – Sept.
- Content for Communications/outreach = ongoing



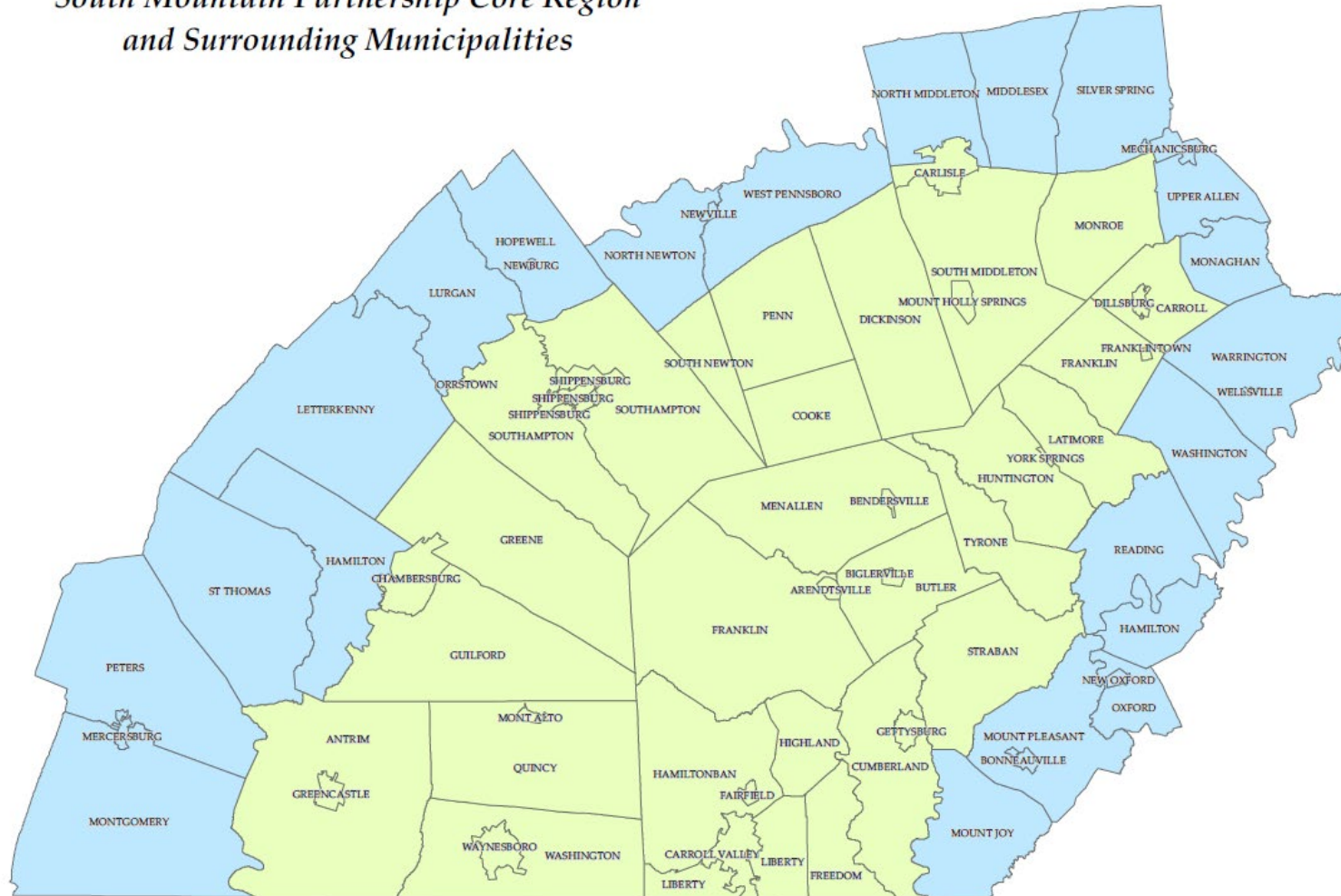
Engagement/Outreach – to date

- Steering Committee
- Initial Questionnaire
- Survey of Partners
- Tourism Forum
- Power of Partnership Meeting
- Monthly FaceBook posts
- Around The Mountain newsletter articles
- Winter Partners Meeting



The South Mountain Region

*South Mountain Partnership Core Region
and Surrounding Municipalities*



Indicators & Metrics for State of the Region

- Indicators = broad categories of challenges & trends
- Metrics = specific data sets to measure state of the region, positive & negative
- Metrics – main feature of Report Card
- Need for context and background



Indicator/ Metric Selection Process

- Initial determination of Indicators (by Steering Committee)
 - Nature
 - Recreation
 - Agriculture & Food
 - History & Culture
 - Public Health
- Local Subject Matter Advisors Recruitment
- Local Advisors Meeting – brainstorming on metrics
- ID of Challenges – from relevant plans
- Alignment of Challenges and Metrics
- Assessment of Data Availability – scale, historical data
- Local Advisor Group Meetings
- Review by Steering Committee
- Final List



Indicators & Metrics - *final draft*

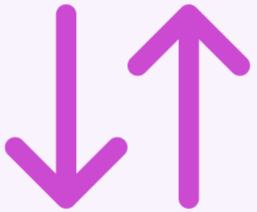
- Nature
 - Acres of preserved land
 - Acres of forested land
 - Miles of impaired streams
 - Acres of wetlands
 - Miles of riparian buffers
- Agriculture & Food
 - Acres of farmland
 - Acres of preserved farmland
 - Crop production
 - Access to fresh food
 - Food deserts
- History/Culture
 - # of existing/potential historic sites
 - # of cultural resources
- Recreation
 - Acres of parkland
 - Miles of trails
 - Proximity to trails/parks
- Public Health
 - # of bad air days
 - Access to public transportation
 - Extreme heat/rain events



Which metrics are most useful to your work or life?

<https://auth.slido.com/eu1/api/latest/the-auth/user/lifecycle-process/shareable-link/init?token=1595f20cbd522d71d4817d26ebc938507b54b2119035eb0a7030399976fa1d2b>

slido



Pick the top three metrics most useful for your work or life...

ⓘ Start presenting to display the poll results on this slide.

Next Steps

- Finalize metrics
- Analyze Metrics
- Identify Key Regional Challenges
- Develop Report Card
- Develop Interactive Maps
- Draft Recommendations
- Develop Story Map



Key Regional Challenges?

What are the key regional challenges that the South Mountain region faces?



<https://auth.slido.com/eu1/api/latest/the-auth/user/lifecycle-process/shareable-link/init?token=1595f20cbd522d71d4817d26ebc938507b54b2119035eb0a7030399976fa1d2b>

slido



What is the biggest regional challenge facing the South Mountain today?

ⓘ Start presenting to display the poll results on this slide.

Thank You

Questions?

Steve Nelson
Eastwick Solutions
steve@eastwicksolutions.com
610.233.8118

