
Around South Mountain Newsletter: Spring Forward with Partnership

Katie Hess <southmountainpartnership@mg2.lglcrm.net>
Reply-To: khess@appalachiantrail.org

Wed, Apr 8, 2026 at 9:05 AM

[Donate](#)



**SOUTH MOUNTAIN
PARTNERSHIP**
CONSERVATION NETWORK

MARCH/APRIL

AROUND SOUTH MOUNTAIN

The South Mountain Partnership works best as a network of people and organizations working toward common goals.

Our common goal? Making the future of our region better.

**The Latest South Mountain
Partnership News**

LAST CHANCE! Spring Meeting and Regional Trail Coalition



Join us this Friday, April 10 for our Spring Partnership meeting in the morning, and Regional Trail Coalition Meeting in the afternoon. Attend one or both!

Registration is open through April 8th at 1PM!

[Learn More & Register](#)

Community Impact Grant: Apply by

April 30, 2026



SOUTH MOUNTAIN PARTNERSHIP COMMUNITY IMPACT GRANT

Check out our Mini-Grant Program with a new name!

- New name, same grant program!
- For projects occurring **Sept 2026 to Dec 2027**
- Most grant requests: **\$2,500 to \$15,000**
- NEW IN 2026: match is **25%** of the grant request.
- Where: Cumberland, Adams, Franklin, or York County.
- When: Pre-applications are due by **April 30, 2026.**

Applications are open for South Mountain Partnership's 2026 Community Impact Grants (formerly known as Mini-Grants). This is the same grant program with a name focused on sharing its purpose. There is also a new match requirement in 2026 with a minimum of 25% match needed.

The Program provides funding, on a competitive basis, to projects that sustain the South Mountain landscape's sense of place by protecting and promoting the region's Landscape Resources.

Grants are single-year grants for projects or work from September 2026 - December 2027, ranging from \$2,500 to \$15,000. Eligible applicants include municipalities, municipal agencies, counties, academic institutions, and authorized 501(c)(3) non-profits.

Projects occurring in Adams, Cumberland, Franklin, and York Counties are eligible. Scoring priority will be given to projects within the [core geographic boundaries of SMP](#).

Is this grant right for your project? View our [webinar](#) to learn more, review 2026 updates, and get tips for applying.

[Learn More & Apply](#)

Wildfires in Pennsylvania: What to Know this Spring



Spring brings warmer weather, longer days, and more opportunities to enjoy forests across the Commonwealth. But it also marks the most dangerous time of year for wildfires in Pennsylvania.

According to the Pennsylvania Department of Conservation and Natural Resources, the greatest wildfire risk occurs during March, April, and May, with another peak during October and November.

Understanding why these seasons are risky and how climate change is influencing wildfire conditions can help communities protect forests and reduce fire risk.

[Keep Reading](#)

Calling All Businesses! Stand Out and Support SMP



South Mountain Partnership

2026 Sponsorship Opportunities

Your organization can stand out and support the South Mountain region through sponsoring an 2026 SMP event like our Fall Power of the Partnership Celebration.

Sponsorships begin at \$250 and include meaningful visibility through event recognition, social media, and public outreach. More importantly, your support positions your business as a visible champion for our vibrant, resilient home.

[Learn More & Sponsor](#)

Join South Mountain Partnership

We are always looking to work with organizations in the community who share our goals! By becoming an official “Partner”, you can help support our vision and mission of the Partnership by:

- Attending SMP meetings and events
- Keeping us informed of your organization’s related activities
- Increasing access to the natural, cultural and recreational resources of our region to all.

Becoming a partner is easy and free!

[Become a Partner](#)

Partner News

Save the Date: ATLP Partnership Meeting from November 16-19

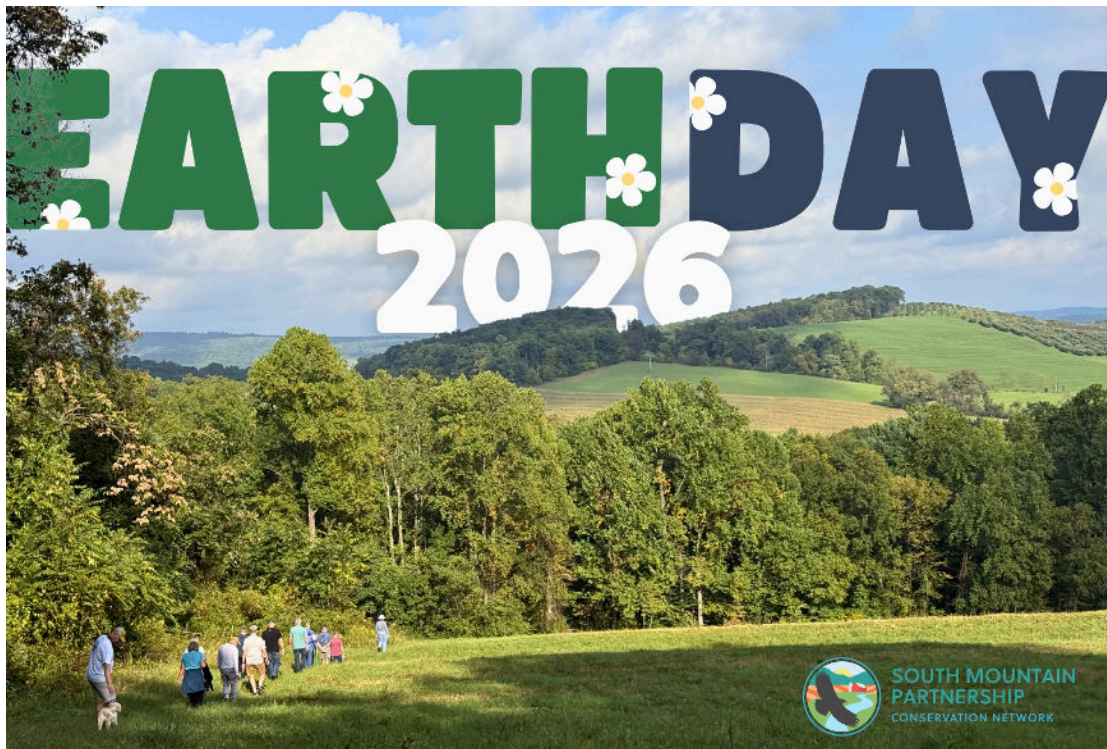


The Appalachian Trail Landscape Partnership (ATLP) will be holding its 2026 Partnership Meeting from November 16-19 at The Crowne Plaza in Harrisburg, PA.

The meeting will be a curated experience of inspiring keynote speakers, partner presentations highlighting replicable success stories and conservation outcomes, insightful panel discussions, networking opportunities, and breakout conversations about our shared opportunities and conservation action.

[Learn More](#)

Celebrate Earth Day in South Mountain



Earth Day is just around the corner, and the South Mountain region of Pennsylvania is bursting with events and opportunities to connect with nature, learn something new, and make a positive impact in your local community. Whether you're looking to volunteer, shop sustainably, or enjoy a fun day outdoors with the family, there's something for everyone.

View a roundup of Earth Day happenings across the region:

[Keep Reading](#)

Trout Season is Here!

Are you an experienced fisher or looking to “get your feet wet”? Check out the Cumberland Valley Visitor’s Bureau’s blog on [all you need to know about local waterways](#) and types of fish to catch.

Strawberry Hill Foundation to Celebrate 40th Anniversary!

Join them for their upcoming [40th Anniversary Celebration](#) one month from today! Their Night for Nature Dinner & Auction at the Lodges at

Looking to Volunteer Outdoors?

Friends at Kings Gap are seeking volunteers for their [Trail Work Volunteer Days](#), starting on Saturday, April 18 from 9am-2pm. Improve the hiking experience at Kings Gap by installing signs, trail maintenance, rocks, trees, drainage, etc. The workdays are the first Saturdays of the month (except July) through October.

Gettysburg is happening on Thursday, May 7 from 6-9pm.

Volunteer: Trout Stocking

Have you ever wanted be part of one of Pennsylvania's coolest fishing traditions? The Pennsylvania Fish and Boat Commission is looking for volunteers to help stock 3.2 million hatchery-raised trout in streams and lakes across the state—including in our beautiful state parks and forests! [View the full stocking schedule](#)

Events

30th Annual Kite Fly

Saturday, April 11 - Join Buttonwood for our 30th Annual Kite Fly event in Waynesboro at Hooverville Elementary School. Free kite flying (all ages) with expert flying help from our Kite Masters—brothers Sam and George Adams.

[Learn More](#)

Music in the Pines Series

Various dates and times from April 18-26 - Enjoy

Hike & Learn: Bird Box Monitoring

Friday, April 17 from 1-2:30pm - Join a small group to check the bird boxes for nests, eggs, and chicks. At Kings Gap - meet at the education building. Registration Required: Email Kim at kischubert@pa.gov or call 717-486-3799

Data Center Information Session

Wednesday, April 29 from 6:30-8:30pm - Interested in learning more about data centers? A panel of experts

performances this spring at Totem Pole Playhouse, South Mountain's own regional theatre company in Caledonia State Park. This year's series lineup is a slam dunk!

[Learn More](#)

will provide an informational presentation for residents, planning commissions, and local governments. Note: This event is not tied to any specific data center project.

[Learn More](#)

[View More Events](#)

Grants

Wild East Action Fund Opens Soon - A competitive grant program administered by the Appalachian Trail Conservancy that supports the mission of the ATLP. Funding is available to eligible organizations working on land protection, conservation planning, and community resilience projects that help strengthen the natural, cultural, historic, scenic, recreational, agricultural, and community assets across the A.T. Landscape. [Learn more](#)

Want to learn more about this year's funding opportunity? Register (required) to join our upcoming virtual information session on April 27 from 1:00 PM - 2:00 PM EST. [Register](#)

[More Regional Funding Opportunities](#)

Job Opportunities

Associate Director of Kittatinny Ridge Conservation Landscape - The Associate Director of Kittatinny Ridge reports to the Director of Pennsylvania Landscape Conservation and plays a vital role in advancing the Appalachian Trail Conservancy's (ATC) landscape conservation program by leading administration of the Kittatinny Ridge Conservation Landscape (KRCL). This position provides strategic and operational leadership for KRCL initiatives and collaborates closely with a small team of landscape conservation colleagues, as well as partners and staff across ATC departments. [Learn more and apply \(applications will be reviewed continuously through April 10\)](#)

Conservation Assistant at Central Pennsylvania Conservancy - The Conservation Assistant aids the Central Pennsylvania Conservancy's directors in achieving the organization's mission to acquire, preserve, and protect local land and natural resources in south central Pennsylvania. [Learn more and apply](#)

Erosion & Sediment Control Technician - The Franklin County Conservation District (FCCD) is growing! This position will be responsible for providing technical assistance to surveyors, engineers, plan writers, developers, and contractors while administering PA's Erosion & Sediment Control Program in Franklin County. Applicant must have a good working knowledge of soils, nutrients, hydrology, land use and geography. [Learn more and apply by April 27, 2026](#)

Are you hiring? Submit your organization's job posts to our board by emailing jchain@appalachiantrail.org.

[View Our Job Board for More](#)

Social Media Catch-up

Click to explore our social media channels. Follow us for the latest news, upcoming events, and more!





Live, Grow, Lead Healthy

Despite the different opinions, perspectives, and worldviews that each of us carry, we all share a common trait: we call the South Mountain landscape home. We believe in the power of this common ground to build conversation around the future of this landscape - and our future while living within this landscape.

Learn more at southmountainpartnership.org

[Support Our Efforts - Donate](#)



**SOUTH MOUNTAIN
PARTNERSHIP**
CONSERVATION NETWORK



The South Mountain Partnership [SMP] is managed as a public-private partnership by the Pennsylvania Department of Conservation and Natural Resources and the Appalachian

Trail Conservancy. SMP is financed in part by a grant from the Community Conservation Partnerships Program, the Environmental Stewardship Fund, under the administration of the Pennsylvania Department of Conservation and Natural Resources, Bureau of Recreation and Conservation.

Unsubscribe [here](#).