



South Mountain Partnership Spring & Regional Trail Meeting

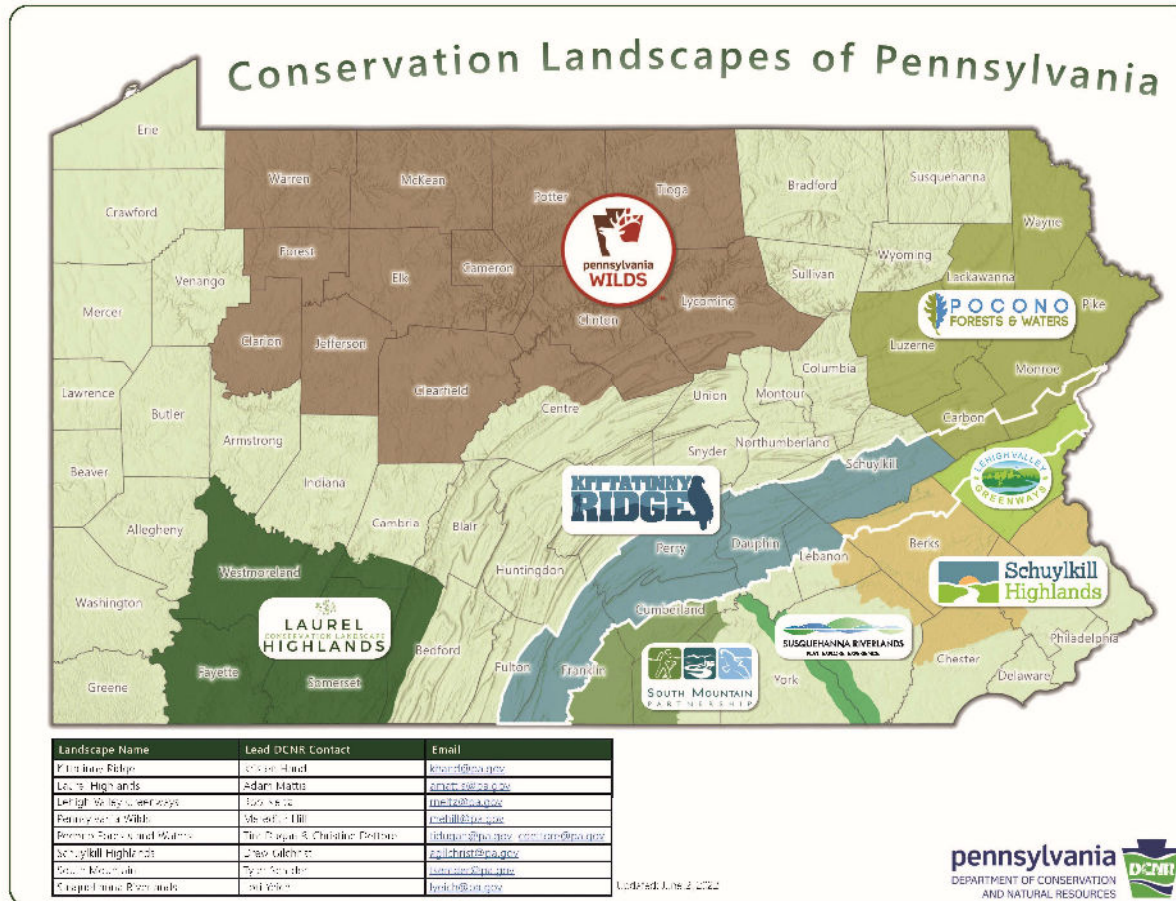
April 10 | 9AM - 2:30 PM |
Dillsburg Borough Hall,
Dillsburg

Lori K. Yeich,
Recreation and
Conservation Manager,
Bureau of Recreation
and Conservation,
PA Department of
Conservation and
Natural Resources



**SOUTH MOUNTAIN
PARTNERSHIP**
CONSERVATION NETWORK

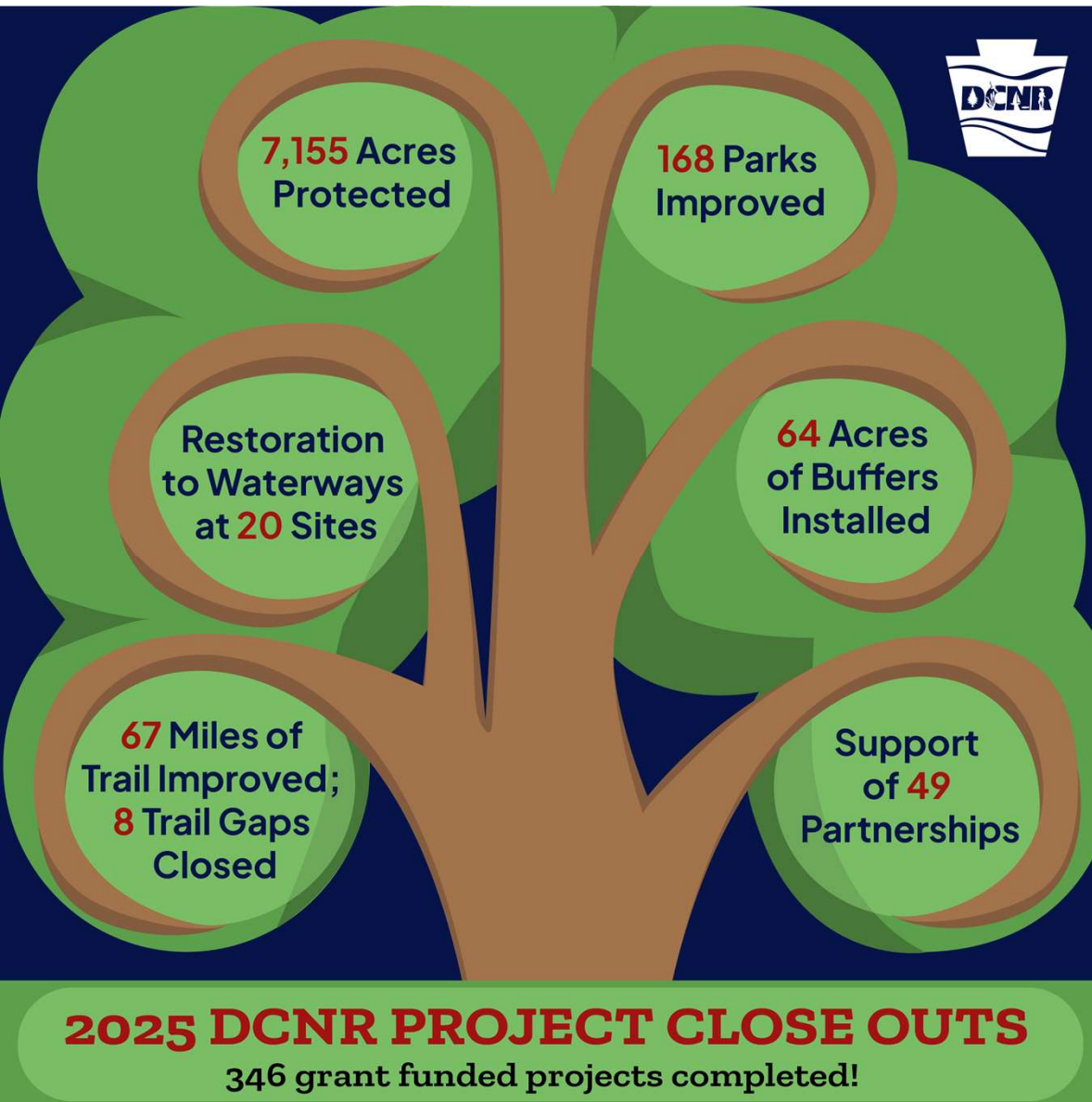
PA's Conservation Landscape Program



Place-based approach to coordinate strategic investment and action in large landscapes, around the values of sustainability, conservation, outdoor



SOUTH MOUNTAIN PARTNERSHIP
CONSERVATION NETWORK



DCNR GRANTS: C2P2

Community Conservation and Partnership Program (C2P2)

- Annual Grant Funding for Parks, Recreation & Conservation Projects
- Open: early January
- Deadline: end of April **(4/30)**
(except Motorized Trails, Peer & Circuit Riders)
- Awards announced around the end of the same year

apps.dcnr.pa.gov/grants

C2P2 Grant Timeline-----2026



JANUARY 12, 2026

Grant Round Opens



NOVEMBER 6, 2025

Grant Workshop



SPRING/SUMMER 2026

DCNR Reviews & Ranks All Applications



APRIL 30, 2026
4:00 PM

Grant Round Closes



JANUARY 2027

Typical Grant Agreements Begin



FALL 2026
Grant Announcement



SPRING/SUMMER 2027

Earliest Your Project Will Begin



<https://apps.dcnr.pa.gov/grants/>

Project Proposal Trends----South Central PA



Park Development:

**Rehabilitation of
Existing Parks, Green
Stormwater
Infrastructure
Manage Stormwater,
Tennis Courts to
Pickle Ball Courts &
Pool Closures**



LAND CONSERVATION: School Districts Divesting of Properties, Land Swopes, Importance of Land Conservancies



**Increase in Funding Inquiries and
grant requests from Non-Profit
Organizations for Recreation
Projects**





**TRAILS: Blue Green
Greenways &
Community Connections
from Regional Trail Systems,
Streambank Stabilization**

What's New: DCNR's Volunteer Management System



[SIGN UP](#) [LOGIN](#) [HELP](#) [CALENDAR](#)





[Open in Maps](#)

West Fairview Harrisburg The National Civil War Museum

Get Involved, Make a Difference.

[VOLUNTEER NOW](#)

Center St Worm Paxtang

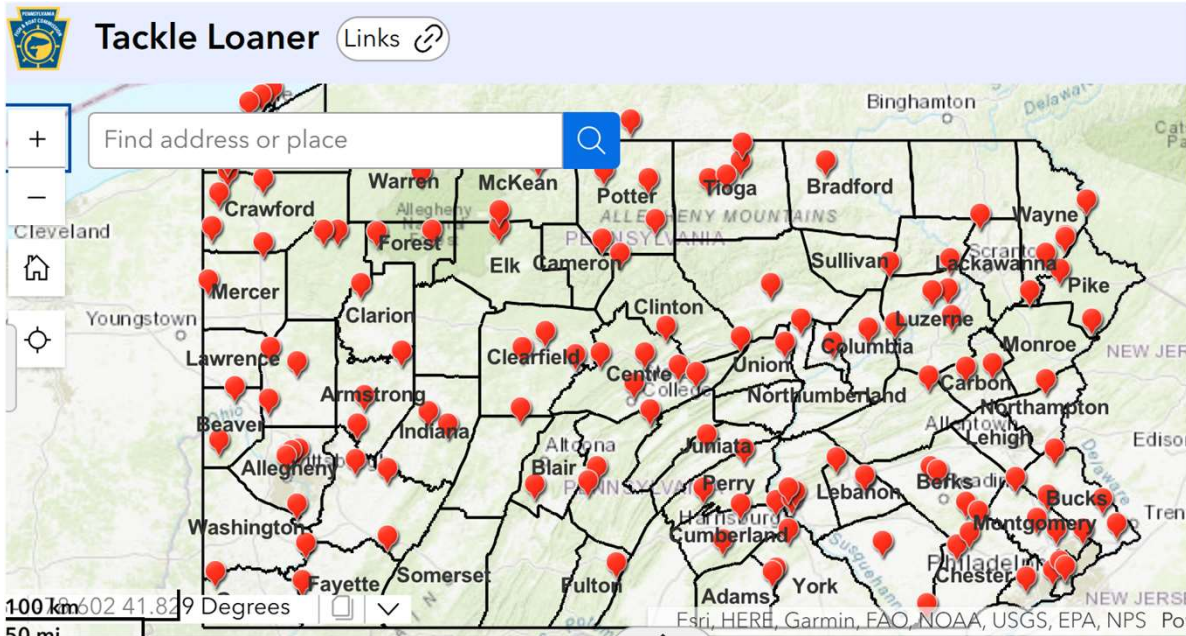
Ricketts Glen

[Pennsylvania Department of Conservation and Natural Resources](#)



[Home | Pennsylvania Parks and Forests Foundation](#)

What's New: DCNR & PA Fish and Boat Commission---Fishing Tackle Loaner Program in State Parks.



[Fishing Tackle Loaner Program](#) | [Fish and Boat Commission](#) | [Commonwealth of Pennsylvania](#)

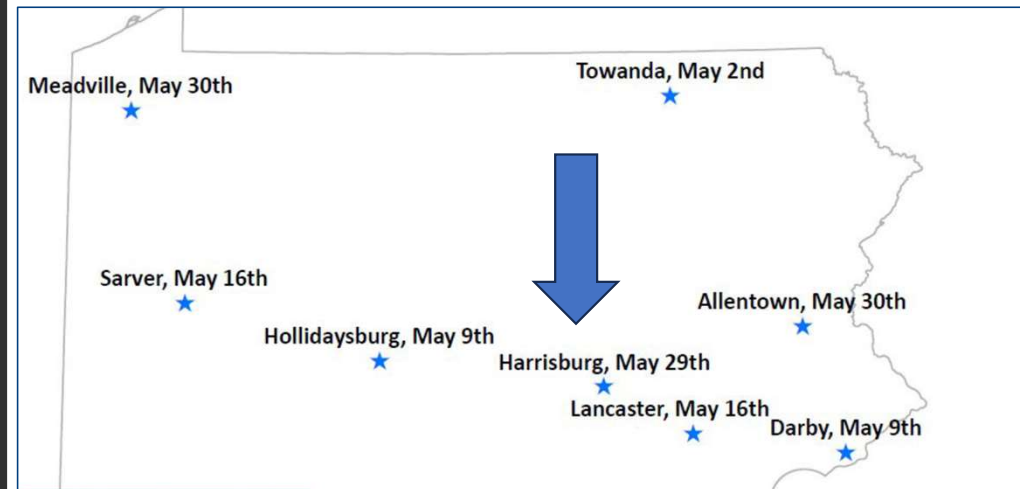
DID YOU KNOW?



38 Pennsylvania state parks have free fishing rods, reels and equipped tackle boxes available to borrow while visiting.



What's New: Invasive Replace-IVE Program

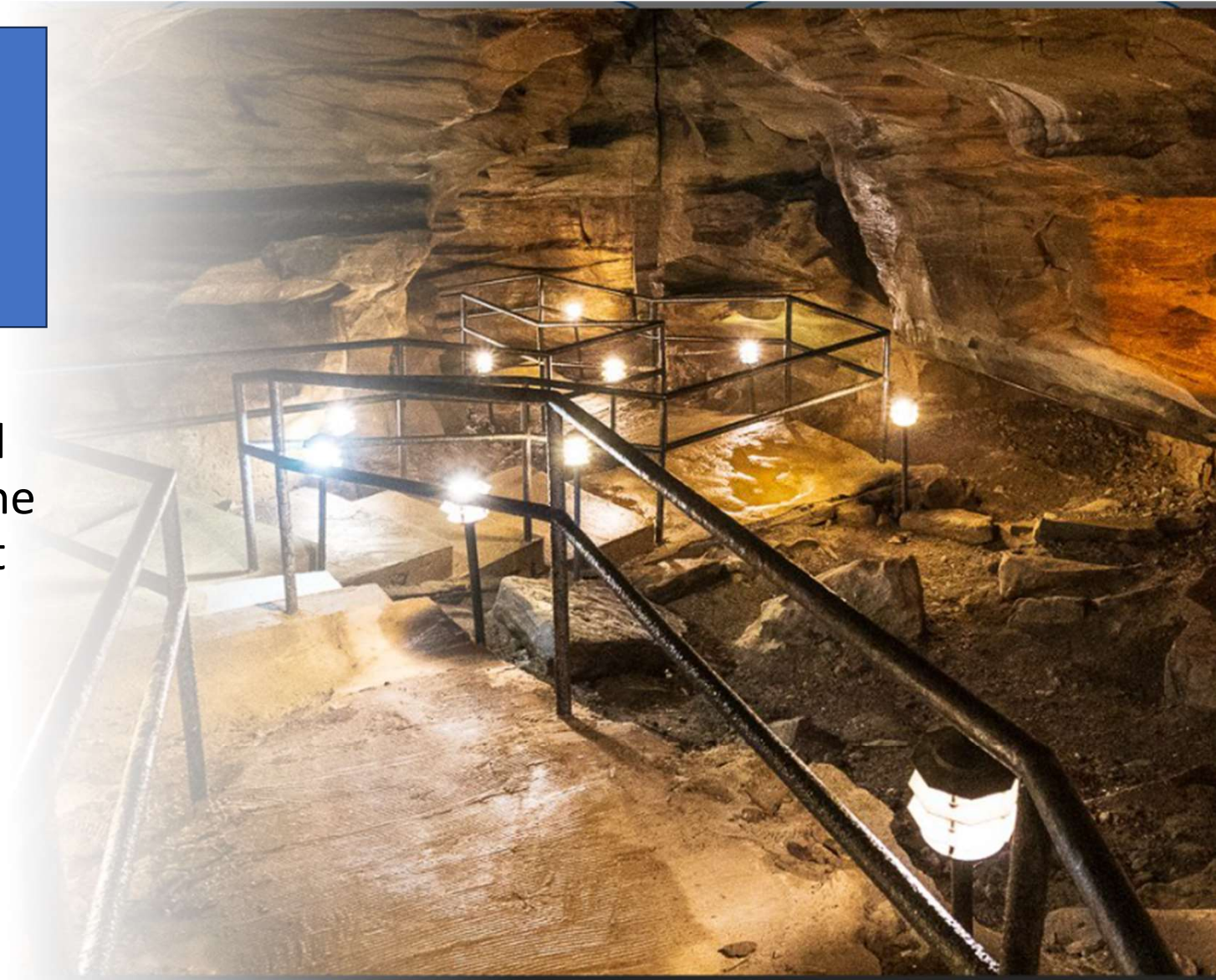


Harrisburg May 29th @ PA Agriculture Building

<https://www.pa.gov/agencies/pda/about-pda/boards-commissions/governors-invasive-species-council/pa-invasive-replace-ive-program>

What's New:
Pennsylvania's 125th
State Park:
Laurel Caverns

Commonwealth's first
and only underground
state park, features one
of the most significant
cave systems in the
eastern United States.



A photograph of a field of purple coneflowers (Echinacea) with prominent red-brown centers. The flowers are surrounded by lush green foliage and some yellow-green plants in the background. The image is used as a background for a contact card.

Lori K. Yeich,

Recreation and Conservation
Manager

BRC, PA DCNR

lyeich@pa.gov

717-303-8460